

COUNTY OF LOS ANGELES

ROAD DEPARTMENT



LANCASTER QUAD

BENCH MARKS

1962

PREFACE

The Road Department level net is composed of more than 1,000 miles of levels supporting in excess of 10,000 bench marks. In 1964-65, a major readjustment of the net was undertaken. To emphasize the complete break with previous elevations, the SY, SG & SL series bench marks have been re-labeled BY, BG & BL, respectively.

To facilitate the adjustment, indexing, and distribution of adjusted values of the net, the County territory was divided into 31 quads or areas. For identification purposes each quad was given a name, viz., "Rosemead," "La Mirada," "Santa Fe," etc. When bench marks and elevations in the Road Department net are used, the name of the quad in which the bench mark is located and the date of the adjustment of the elevation must be included in the bench mark description, e.g.,

BG 1887 --L+BN IN CONC HDWL OF DRAIN PIPE UNDER DR 218 FT
NE +18 FT SE C/L INT SAN JOSE HILLS RD +CAMERON AVE MKD (BM)
(COVINA --1965) ELEV. 696.238

It is expected that this general adjustment will, for the most part, remain sound for the next 8 to 12 years. As new circuits are completed, however, re-adjustment of individual quads may become advisable. It is expected that these subsequent adjustments will be in the nature of a few hundredths of a foot. When a quad is re-adjusted, new elevation lists will be published and the date of the re-adjustment will replace the "1965" at the end of the bench mark description. Two bench marks in the same quad with different adjustment dates will not normally join each other. Since all adjustments taper out to nothing at the periphery of the quad, any bench mark in one quad will join any bench mark in another quad regardless of their respective adjustment dates.

The basic accuracy of the net is reflected by an indicated field probable error of plus or minus 0.012 foot per mile of leveling as determined from 298 conditions of closure. However, many years experience in vertical control in the greater Los Angeles basin and Antelope Valley indicate that because of varying degrees of subsidence and heaving, the true datum is recovered only by obtaining substantial agreement of a number of bench marks.

The users of this net are invited to assist in its maintenance by notifying this Department of cases of obliteration, apparent mistakes in descriptions or elevations, and proven disturbance of bench marks.

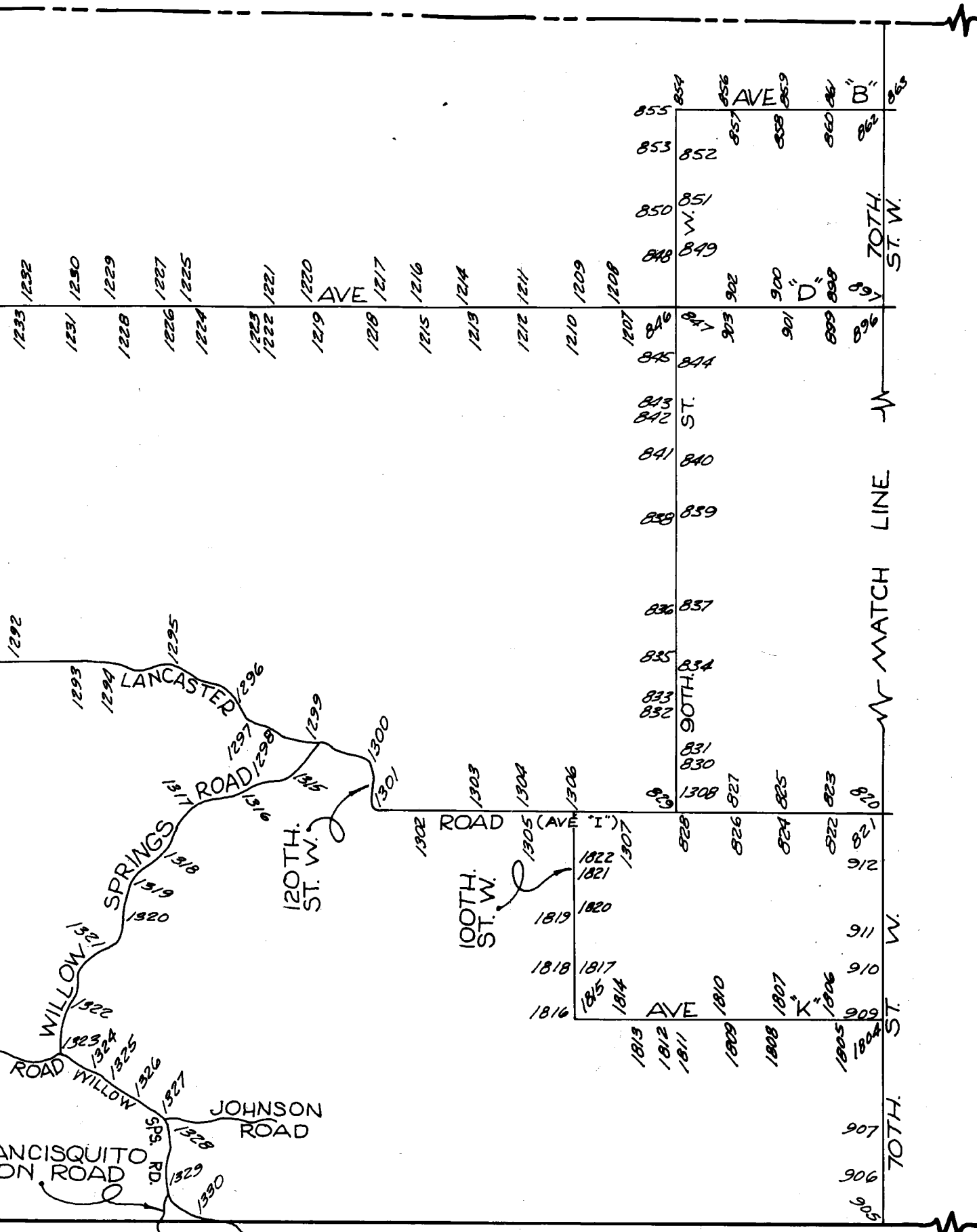
DATUM: U. S. Coast and Geodetic Survey Sea Level Datum
of 1929, through the medium of the Los Angeles
County Engineer Precise Level Net, 1963 Adjust-
ment.

ABBREVIATIONS USED IN BENCH MARK LISTINGS

ABUT - - - - -	Abutment	EC - - - - -	End of Curve
ALG - - - - -	Along	ENT - - - - -	Entrance
ANG PT - - - - -	Angle Point	FL - - - - -	Floor
B/W - - - - -	Back of Walk	FTG - - - - -	Footing
BCR - - - - -	Beginning of Curb Return	F/W - - - - -	Front of Walk
BC - - - - -	Beginning of Curve	GAR - - - - -	Garage
BLDG - - - - -	Building	HDWL - - - - -	Headwall
BM - - - - -	Bench Mark	HSE - - - - -	House
BT SPK - - - - -	Boat or Bolt Spike	INT - - - - -	Intersection
BR CAP - - - - -	Brass or Bronze Cap	IP - - - - -	Iron Pipe
C B - - - - -	Catch Basin	LT - - - - -	Left
CTR - - - - -	Center	LACE - - - - -	L. A. City Engineer
C/L - - - - -	Center Line	LACS - - - - -	L. A. County Engineer
C/L INT - - - - -	Center Line Intersection	L AFC - - - - -	L. A. Co. Flood Control
C/L PROD - - - - -	Center Line Produced	L+BN - - - - -	Lead and Bench Nail
CONC - - - - -	Concrete	L+BR - - - - -	Lead and Brad
COR - - - - -	Corner	L+N - - - - -	Lead and Nail
COE - - - - -	Corps of Engineers	L+RDEM TAG - - - - -	Lead and Road Dept. Bench Mark Tag
CULV - - - - -	Culvert	L+SPK - - - - -	Lead and Spike
CB - - - - -	Curb	L+T - - - - -	Lead and Tack
CS MON - - - - -	County Engineer Monument	MCR - - - - -	Middle of Curb Return
CS BR CAP - - - - -	County Engineer Brass Cap	MKD - - - - -	Marked
CT SPK - - - - -	Cut Spike	MC - - - - -	Middle of Curve
DR - - - - -	Drive or Driveway	MON - - - - -	Monument
E/O - - - - -	East of	N/O - - - - -	North of
ECR - - - - -	End of Curb Return	NR - - - - -	Near

ABBREVIATIONS USED IN BENCH MARK LISTINGS . . . CONTINUED

OPP - - - - - Opposite
PI - - - - - Point of Intersection
PK+W - - - - - PK Nail and Washer
P/L - - - - - Property Line
POST - - - - - Point on Semi-Tangent
PP - - - - - Power Pole
PVMT - - - - - Pavement
PROD - - - - - Produced
RD - - - - - Road
RDEM - - - - - Road Dept. Bench Mark
RR - - - - - Railroad
RT - - - - - Right
R/W - - - - - Right of Way
SDMH - - - - - Storm Drain Manhole
SMH - - - - - Sewer Manhole
SPK - - - - - Spike
ST+W - - - - - Spike Tin and Washer
S/O - - - - - South of
TP - - - - - Telephone Pole
USC+GS - - - - - U. S. Coast and Geodetic Survey
USGS - - - - - U. S. Geological Survey
WK - - - - - Walk
W/O - - - - - West of

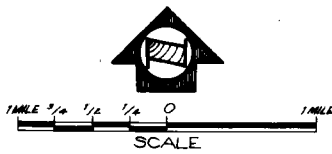
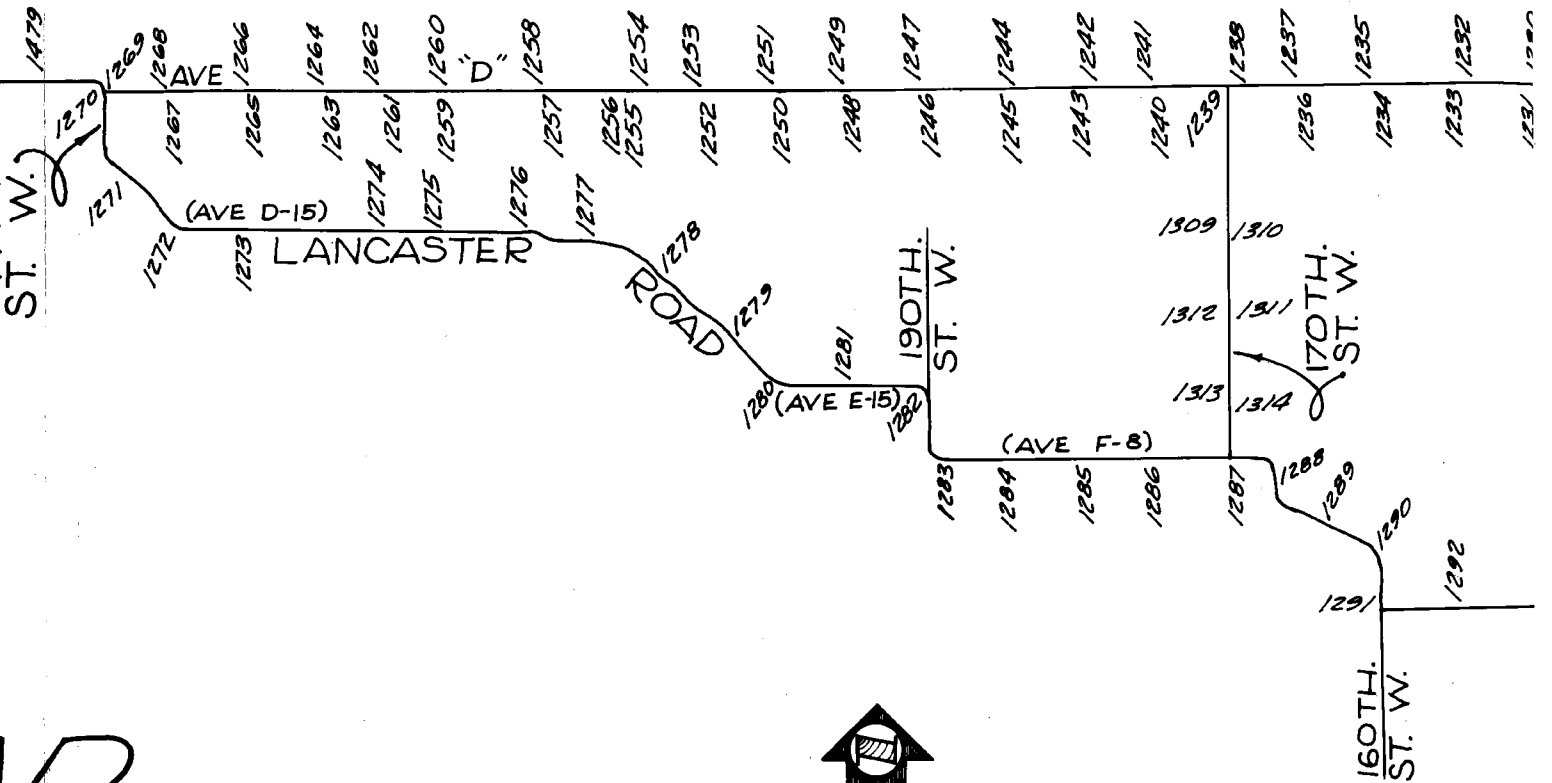


ALMDALE QUAD

W MATCH LINE

COUNTY

COUNTY

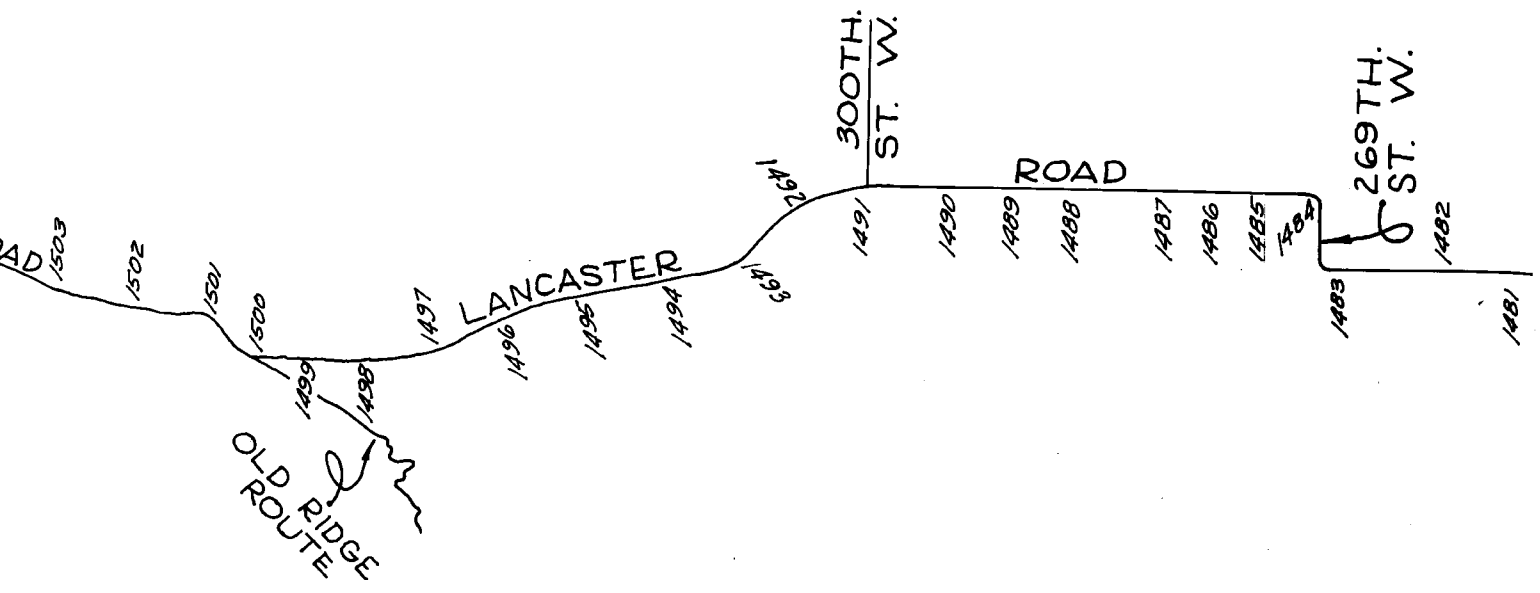


ELIZABETH LAKE - PINE C&N ROAD

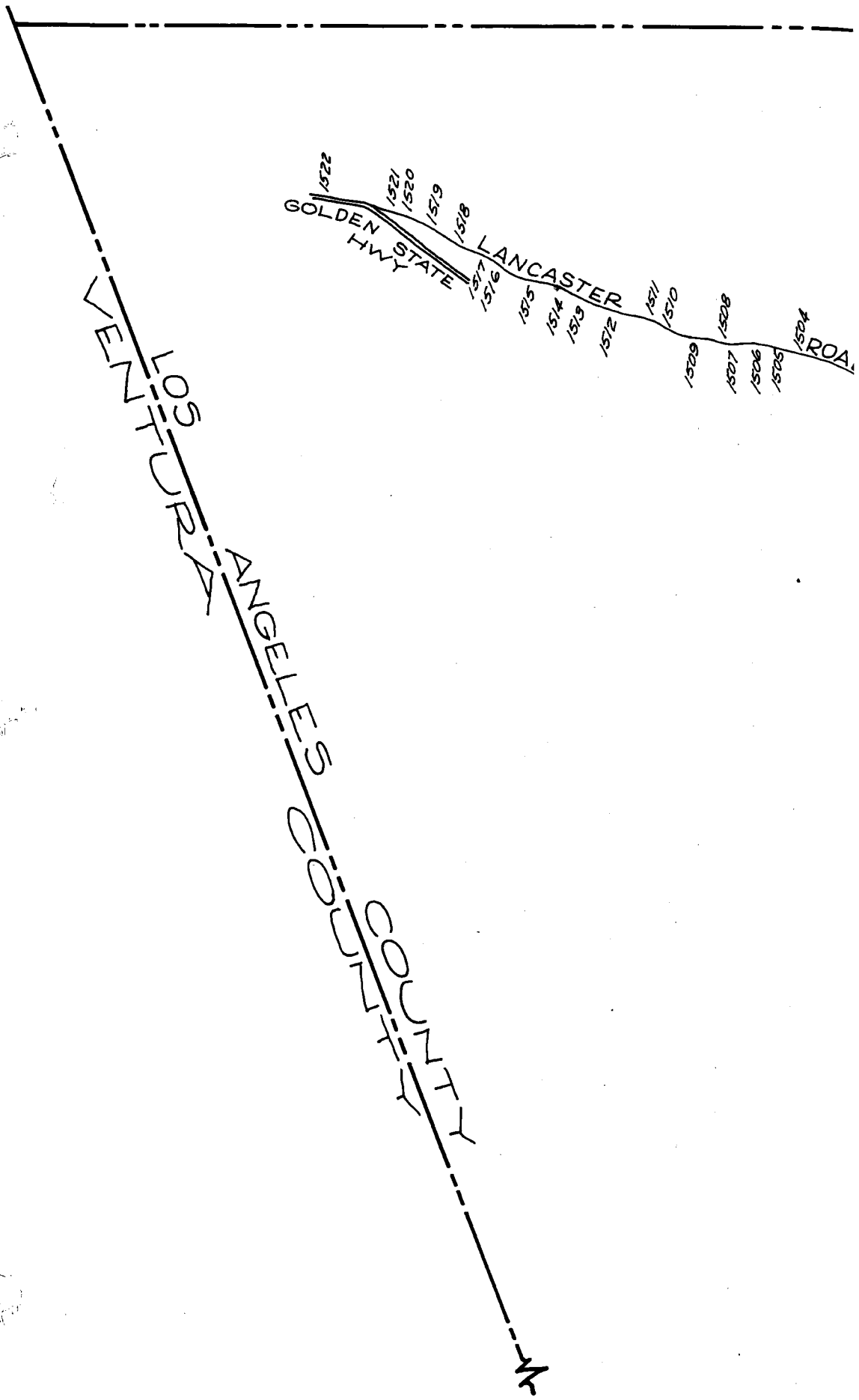
SAN FRANCIS CANYON RD

PA

LOS KERN ANGELES



LANCASTER QU
(WEST)



VENTURA

LOS ANGELES COUNTY

GOLDEN STATE HWY
LANCASTER
ROAD

1522
1521
1520
1519
1518
1517
1516
1515
1514
1513
1512
1511
1510
1509
1508
1507
1506
1505
1504

N

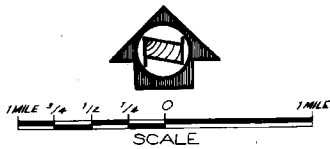
DUNTY

CASTER QUAD (EAST)

COUNTY

BERNARDINO

SAN



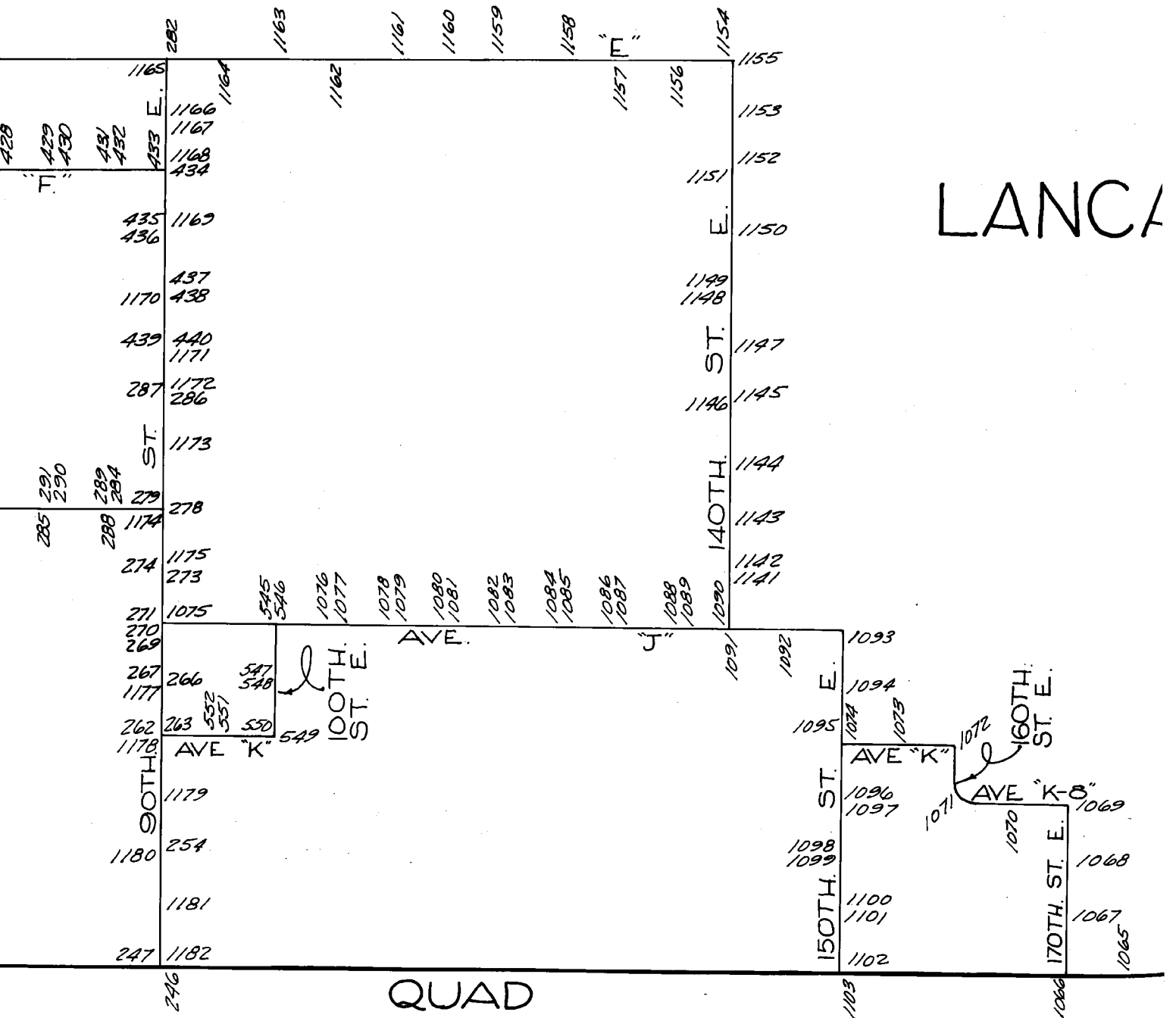
1069
1068
1067
1065

1064

COUNTY

ANGELES

COUN



LANCA

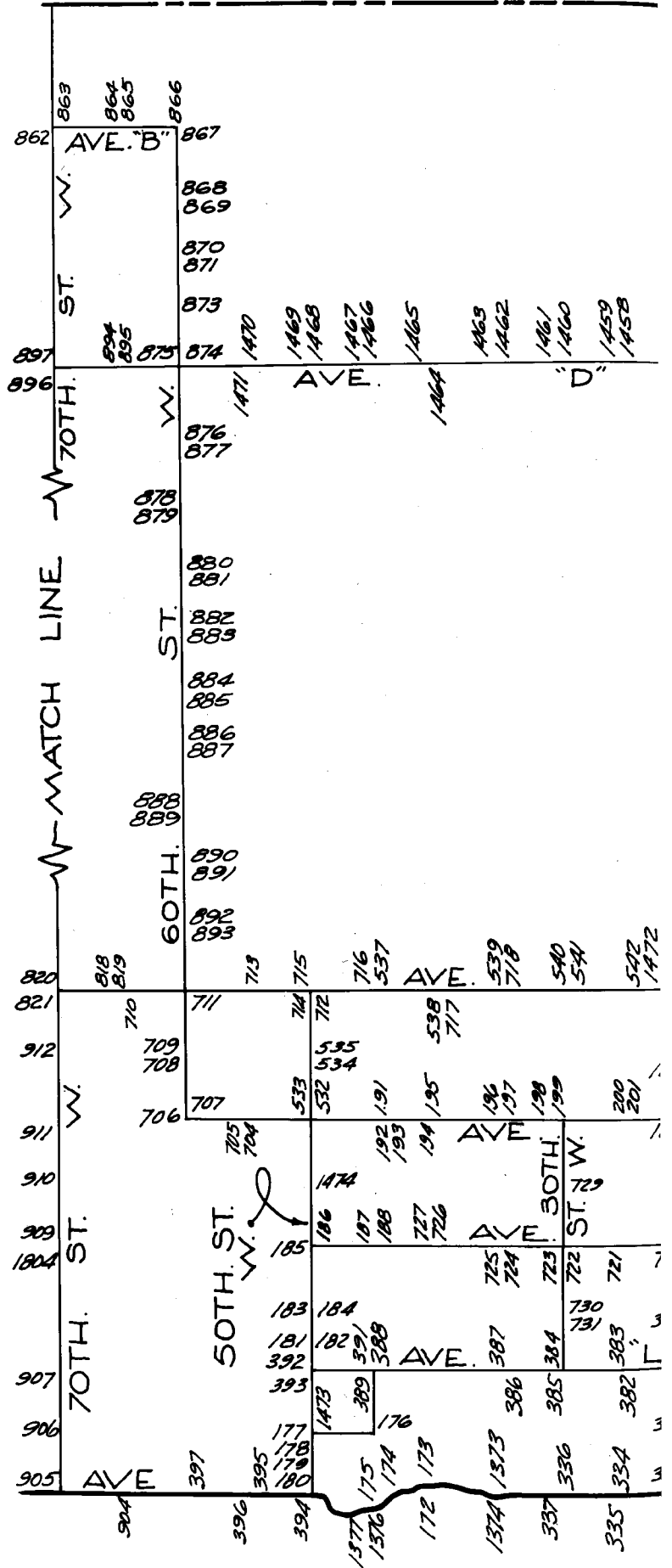
KERN

LOS

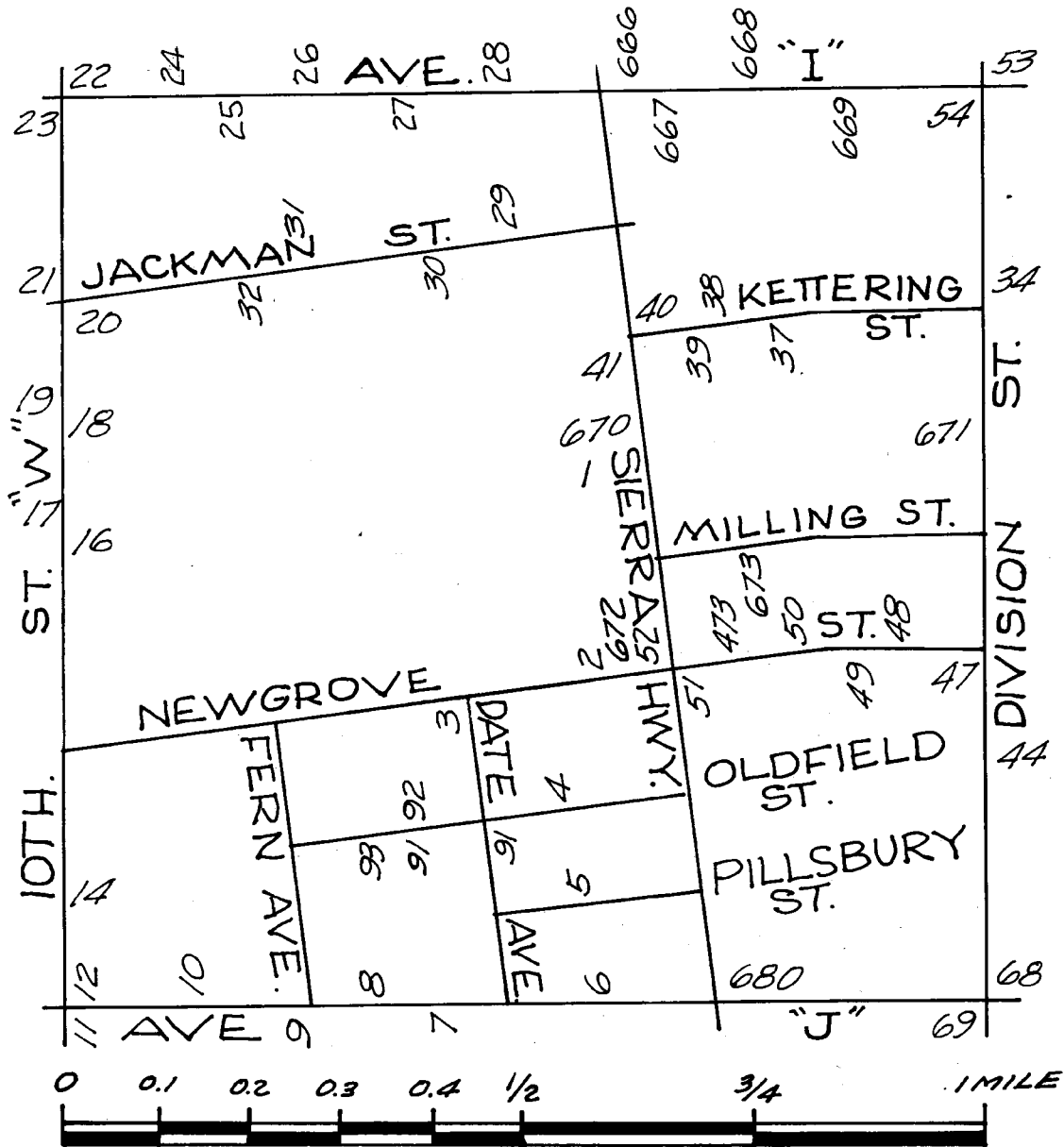


PALMDALE

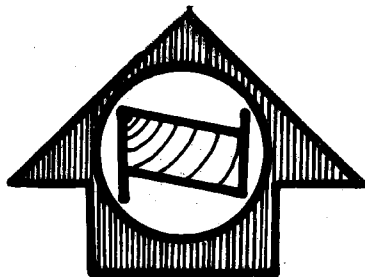
LANCASTER QUAD (WEST)



LANCASTER QUAD (SHEET 3)



SCALE



APR 1966

LOS ANGELES COUNTY ROAD DEPARTMENT
SURVEY SECTION FIELD ENGINEERING DIVISION

PAGE 1

QUAD-YEAR	ELEV	DESCRIPTION (INCLUDE QUAD AND YEAR IN DESCRIPTION)	BM NUMBER
LANCASTR (1962)	2353.772	4IN BR CAP IN CONC NW COR BLDG NO 512 LANCASTER BLVD @ FIRST ALLEY W OF SIERRA HWY MKD (RESET 1961)	SL 1B
LANCASTR (1962)	2361.107	L+T MCR @ SE COR BEECH AVE + NEWGROVE ST	SL 2
LANCASTR (1962)	2362.738	L+T E CB CEDAR AVE + 35FT S C/L NEWGROVE ST	SL 3
LANCASTR (1962)	2366.150	L+BN MCR NW COR CEDAR AVE + OLDFIELD ST	SL 4
LANCASTR (1962)	2369.633	L+T MCR NW COR CEDAR AVE + PILLSBURY ST	SL 5
LANCASTR (1962)	2372.843	L+T MCR NE COR AVE J + CEDAR AVE	SL 6
LANCASTR (1962)	2369.719	L+BN IN CB 1FT N BCR 66 FT N + 18FT W C/L INT AVE J + ELM AVE	SL 7A
LANCASTR (1962)	2368.287	L+BN MCR SE COR AVE J + FIG AVE	SL 8
LANCASTR (1962)	2367.916	L+T IN CB IN FRONT OF PARK VIEW SCHOOL 60FT S AVE J ON C/L PROD FERN AVE	SL 9
LANCASTR (1962)	2366.443	L+T SE COR AVE J + HARWOOD AVE 40FT OF AVE J + 1FT E OF BCR	SL 10
LANCASTR (1962)	2360.975	L+BN MCR SW COR AVE J + TENTH ST W	SL 11A
LANCASTR (1962)	2360.646	L+BN NE COR TENTH ST W + AVE J + 1FT N OF BCR	SL 12
LANCASTR (1962)	2354.960	L+T CONC WLK HSE NO 44540 TENTH ST W 5FT FROM FIRST STEP TO FRONT DOOR @ NE COR NORBERRY AVE + TENTH ST W	SL 14
LANCASTR (1962)	2345.559	L+T N CB LANCASTER BLVD 95FT W + 14FT N C/L INT LANCASTER BLVD + TENTH ST W	SL 16A
LANCASTR (1962)	2347.157	L+T IN CONC SLAB 79FT E + 104FT N C/L INT LANCASTER BLVD + TENTH ST W	SL 17A
LANCASTR (1962)	2339.658	L+BN 3FT N PP NO 271449E 45FT S + 30FT W C/L INT KETTERING ST + TENTH ST W	SL 18
LANCASTR (1962)	2338.969	L+BN IN E CB TENTH ST W 10FT N BCR @ NE COR KETTERING ST + TENTH ST W	SL 19
LANCASTR (1962)	2337.242	L+T IN CB RET @ SW COR JACKMAN ST + TENTH ST W 10FT N BCR	SL 20
LANCASTR (1962)	2336.894	L+T MCR @ NE COR JACKMAN ST + TENTH ST W	SL 21
LANCASTR (1962)	2332.846	L+T S CB AVE I IN E END CATCH BASIN OPENING 30FT S + 69FT E C/L INT AVE I + TENTH ST W	SL 22
LANCASTR (1962)	2331.555	L+T IN MCR @ NW COR AVE I + TENTH ST W	SL 23A
LANCASTR (1962)	2333.653	L+T N CB AVE I ON C/L PROD FERN AVE	SL 24E

QUAD-YEAR	ELEV	DESCRIPTION (INCLUDE QUAD AND YEAR IN DESCRIPTION)	BM	NUMBER
LANCASTR (1962)	2336.581	L+T N CB AVE I CN C/L PROD ALLEY W OF DATE AVE	SL	25B
LANCASTR (1962)	2335.955	L+BN W EDGE CONC DRWY HSE NO 673 31FT W + 75FT N C/L INT ELM AVE + AVE I	SL	26A
LANCASTR (1962)	2337.161	L+T N CB AVE I CN C/L PROD CEDAR AVE	SL	27A
LANCASTR (1962)	2337.928	L+BN E CB CEDAR AVE 6FT S BCR @ SE COR CEDAR AVE + AVE I	SL	28
LANCASTR (1962)	2342.786	L+T W CB CEDAR AVE 3FT S BCR @ SW COR CEDAR AVE + JACKMAN ST	SL	29
LANCASTR (1962)	2341.250	L+T W CB DATE AVE 0.5FT N BCR @ NW COR DATE AVE + JACKMAN ST	SL	30
LANCASTR (1962)	2341.866	L+BN S CB JACKMAN ST 5FT W BCR @ SW COR OF ALLEY TO S BTWN FIG AVE + ELM AVE	SL	31
LANCASTR (1962)	2341.331	L+BN S CB JACKMAN ST 6FT W BCR @ SW COR FIG AVE + JACKMAN ST	SL	32
LANCASTR (1962)	2351.788	L+T CONC STEP HSE NO 45027 N DIVISION ST 295FT N + 54FT W C/L INT KETTERING ST + DIVISION ST	SL	34
LANCASTR (1962)	2351.138	L+T W EDGE CONC DRWY TO HSE NO 311 KETTERING ST 30FT N + 138FT W C/L INT KETTERING ST + SPEARMAN ST	SL	37
LANCASTR (1962)	2349.239	L+BN W CB YUCCA AVE 6FT N BCR @ NW COR YUCCA AVE + KETTERING ST	SL	38
LANCASTR (1962)	2350.271	L+T CONC BASE FENCE POST 30FT N OF C/L KETTERING + 15FT E OF E RAIL OF SP SIDING TR	SL	39
LANCASTR (1962)	2347.914	L+B E CB SIERRA HWY + 25FT N C/L KETTERING ST + 30FT E C/L SIERRA HWY	SL	40
LANCASTR (1962)	2348.258	L+T IN SW CB RET 26FT S C/L KETTERING ST + 30FT W C/L SIERRA HWY	SL	41
LANCASTR (1962)	2373.638	L+T IN CONC APRON IN NE COR GROCERY STORE @ SW COR NUGENT ST + DIVISION ST 26FT S + 33FT W C/L INT	SL	44
LANCASTR (1962)	2365.533	CS BR CAP MON @ C/L INT OF DIVISION ST + NEWGROVE ST (E EDGE)	SL	47
LANCASTR (1962)	2370.716	L+T NE COR CONC PORCH HSE NO 108 W NEWGROVE ST 50FT S C/L + 100FT W C/L DIVISION ST	SL	48
LANCASTR (1962)	2361.144	CS MON IN HAND HOLE @ C/L INT NEWGROVE ST + TREVOR AVE (E EDGE)	SL	49
LANCASTR (1962)	2361.695	L+T IN CONC WK TO HSE NO 310 NEWGROVE ST 31FT S C/L + 135FT W C/L TREVOR AVE	SL	50
LANCASTR (1962)	2363.632	L+BN IN E CB SIERRA HWY 115FT S C/L PROD NEWGROVE ST 16FT S OF END OF CB	SL	51
LANCASTR (1962)	2362.883	L+T @ MCR SW COR NEWGROVE ST + SIERRA HWY	SL	52
LANCASTR (1962)	2345.702	L+T @ MCR NW COR AVE I + DIVISION ST	SL	53

QUAD-YEAR	ELEV	DESCRIPTION (INCLUDE QUAD AND YEAR IN DESCRIPTION)	BM NUMBER
LANCASTR (1962)	2345.830	L+T @ MCR SW COR AVE I + DIVISION ST	SL 54
LANCASTR (1962)	2355.183	L+BRAD S END CUL-DE-SAC RAYSACK AVE ON C/L PROD 85FT N C/L AVE I	SL 55A
LANCASTR (1962)	2355.018	L+T N CB 3FT W BCR 40FT N + 62FT W C/L INT AVE I + 5TH ST E	SL 57A
LANCASTR (1962)	2361.798	USC+GS BR CAP IN CONC POST 8IN UP 48FT N + 56FT E C/L INT AVE I + 10TH ST E MKD (C1155, 1961)	SL 58A
LANCASTR (1962)	2361.473	CS MON FLUSH 30FT E + 30FT N C/L INT 10TH ST E + AVE I MKD (WC)	SL 59
LANCASTR (1962)	2361.825	USC+GS BR CAP 78FT W + 40FT S C/L INT AVE I + 10TH ST E MKD (Y 488 RESET 1961)	SL 60A
LANCASTR (1962)	2378.377	BR CAP IN CONC 20IN DN @ C/L INT LANCASTER BLVD + 10TH ST E	SL 61
LANCASTR (1962)	2381.677	L+T W EDGE OF CONC DR OF GARAGE TO HSE NO 1016 LANCASTER BLVD 45FT S C/L + 145FT E 10TH ST E	SL 62
LANCASTR (1962)	2397.912	L+T NR MCR @ SW COR 10TH ST E + AVE J 48FT W + 45FT S C/L INT	SL 63A
LANCASTR (1962)	2396.901	BR CAP IN CONC 18IN DN @ C/L INT AVE J + 10TH ST E (W EDGE)	SL 64
LANCASTR (1962)	2391.824	CS MON IN WELL @ C/L INT AVE J + 5TH ST E MKD (T7N, R12W, 1/4 COR 14-23)	SL 65A
LANCASTR (1962)	2385.354	L+BN @ MCR SE COR 4TH ST E + AVE J (SERVICE RD)	SL 66A
LANCASTR (1962)	2384.552	SET L+BN @ MCR SE COR KIRKLAND AVE + AVE J	SL 67
LANCASTR (1962)	2382.961	L+BN 1FT E BCR @ SE COR AVE J + DIVISION ST	SL 68
LANCASTR (1962)	2381.370	CS MON @ C/L INT AVE J + DIVISION ST	SL 69
LANCASTR (1962)	2383.408	L+T IN CONC PORCH TO BLDG NO 203 8FT N OF S EDGE 0.5FT W OF E EDGE 33FT N OF C/L AVE J + 600FT E DIVISION ST	SL 70A
LANCASTR (1962)	2413.497	L+BN E SIDE OF 36IN STANDPIPE 263FT NW OF PP NO 917614-E 215FT W C/L 10TH ST E + 0.5 MI S OF AVE J	SL 71
LANCASTR (1962)	2414.136	CS MON IN WELL 8IN DN @ C/L INT 10TH ST E + AVE J-8 0.5 MI S AVE J MKD (T7N, R12W 1/4 COR, 23-24)	SL 72B
LANCASTR (1962)	2434.590	BR CAP IN CONC 15IN DN @ C/L INT 10TH ST E + AVE K	SL 73
LANCASTR (1962)	2436.041	CHIS X IN TOP OF BOLT ON S SIDE OF FIRE HYDRANT BASE 50FT W C/L 10TH ST E + 28FT S C/L AVE K	SL 74
LANCASTR (1962)	2425.927	CS MON IN WELL @ C/L INT AVE K + 6TH ST E	SL 75A
LANCASTR (1962)	2426.538	CS MON IN CONC POST 3IN UP 40FT S + 55FT W C/L INT AVE K + 6TH ST E MKD (CSBM 105-9, 1958, RE 5869)	SL 76A

QUAD-YEAR	ELEV	DESCRIPTION (INCLUDE QUAD AND YEAR IN DESCRIPTION)	BM NUMBER
LANCASTR (1962)	2425.496	CHIS X IN TOP OF BOLT ON W SIDE OF FIRE HYDRANT BASE 25FT S C/L AVE K + 135FT W DRWY TO HSE NO 504 AVE K	SL 77
LANCASTR (1962)	2422.436	CS BR CAP IN CONC 12IN DN @ C/L INT AVE K + DIVISION ST	SL 79
LANCASTR (1962)	2400.793	L+BN @ MCR @ NE COR DIVISION ST + AVE J-8	SL 80
LANCASTR (1962)	2399.660	L+BN @ MCR SE COR DIVISION ST + AVE J-7	SL 81
LANCASTR (1962)	2416.599	CHIS X IN TOP BOLT ON W SIDE OF FIRE HYDRANT 30FT S C/L AVE K + OPP HSE NO 461 AVE K	SL 82
LANCASTR (1962)	2414.038	CS MON IN WELL 18IN DN @ C/L INT AVE K + 5TH ST W (N SIDE)	SL 83
LANCASTR (1962)	2406.381	CHIS X ON TOP OF BOLT ON NE SIDE OF FIRE HYDRANT BASE 30FT S C/L AVE K + 75FT W C/L 10TH ST W	SL 84
LANCASTR (1962)	2405.325	L+BN @ NE COR OF SO CAL GAS CO VALVE BOX 44FT N C/L AVE K + 115FT W C/L 10TH ST W	SL 85A
LANCASTR (1962)	2380.940	CS MON @ C/L INT 10TH ST W + AVE J-8 (W EDGE)	SL 86
LANCASTR (1962)	2381.198	L+T 1FT N BCR @ NE COR 10 ST W + AVE J-8	SL 87
LANCASTR (1962)	2377.458	L+T S CB AVE J-6 1FT E BCR @ SE COR 10TH ST W + AVE J-6	SL 88
LANCASTR (1962)	2364.144	CS MON IN WELL 8IN DN @ C/L INT OLDFIELD ST + DATE AVE MKD (CS MON RE 5869)	SL 91A
LANCASTR (1962)	2364.247	L+T @ MCR NW COR OLDFIELD ST + DATE AVE	SL 92
LANCASTR (1962)	2362.699	L+T @ MCR SW COR ELM AVE + OLDFIELD ST	SL 93A
LANCASTR (1962)	2397.659	BRONZE DISK IN CONC 6IN DN 60FT E + 125FT S C/L INT SIERRA HWY + AVE J-8 MKD (S 811 1947 RESET 1955)	SL 118
LANCASTR (1962)	2347.818	USC+GS BRASS DISK IN CONC 4IN UP 65FT E DR TO ANTELOPE VALLEY FAIR 681FT E OF C/L DIVISION ST + 41FT N C/L AVE I MKD (+ 488 1955)	SL 119
LANCASTR (1962)	2326.585	L+T IN N SERVICE ROAD CB @ NE COR AVE I + 15TH ST W 51FT E + 80FT N C/L INT	SL 120
LANCASTR (1962)	2326.752	RDBM TAG IN S SERVICE ROAD CB @ SW COR AVE I + + 15TH ST W 51FT W + 80FT S C/L INT	SL 121
LANCASTR (1962)	2323.460	CS MON 5IN UP @ NE COR AVE I + 20TH ST W 40FT N + 66FT E C/L INT	SL 122A
LANCASTR (1962)	2323.727	USGS BRASS DISK 3IN UP 36FT N + 6FT W C/L INT AVE I + 20TH ST W MKD (RR 37-1929)	SL 123
LANCASTR (1962)	2331.591	CS BRASS CAP MON IN WELL 12IN DN @ C/L INT 20TH ST W + LANCASTER BLVD MKD (1/4 SEC COR 16-17 T7N R12W) (E EDGE)	SL 124
LANCASTR (1962)	2331.686	RDBM TAG IN CB AT END OF CUL-DE-SAC 63FT W + 60FT S OF C/L INT LANCASTER BLVD + 20TH ST W	SL 125

QUAD-YEAR	ELEV	DESCRIPTION (INCLUDE QUAD AND YEAR IN DESCRIPTION)	BM NUMBER
LANCASTR (1962)	2342.740	CS BR CAP MON @ C/L INT AVE J + 20TH ST W MKD (R12W T7N SEC 17-16-20-21) (N EDGE)	SL 126
LANCASTR (1962)	2344.595	RDMB TAG IN N CB @ NE COR AVE J + 20TH ST W 108FT E + 30FT N C/L INT	SL 127
LANCASTR (1962)	2350.367	RDBM TAG 6FT W BCR @ SW COR AVE J + 15TH ST W 66FT W + 30FT S C/L INT	SL 128
LANCASTR (1962)	2351.094	RDBM TAG 40FT S BCR @ SE COR AVE J + 15TH ST W 100FT S + 30FT E C/L INT	SL 129
LANCASTR (1962)	2340.070	L+BN 3FT W OF BCR @ SW COR LANCASTER BLVD + LOWTREE AVE 53FT W + 30FT S C/L INT	SL 131
LANCASTR (1962)	2337.689	L+BN 4FT N BCR @ NE COR LANCASTER BLVD + 15TH ST W 69FT N + 30FT E C/L INT	SL 132
LANCASTR (1962)	2336.050	L+T 3FT S + 1FT W OF EDGE OF CONC DR TO HSE NO 1656 LANCASTER BLVD 50FT S C/L + 1000FT W 15TH ST W	SL 133
BASELINE (1955)	2493.837	USC+GS DISK IN CONC POST 92FT N + 65FT W C/L INT AVE M + 40TH ST W MKD (F 489 1955)	SL 172A
BASELINE (1955)	2470.198	USC+GS DISK IN CONC POST 106FT W C/L 40TH ST W + 0.1 MI N AVE M 150FT S OF E-W RUNWAY QUARTZ HILL AIRPORT MKD (G 489 1955)	SL 173A
BASELINE (1955)	2453.145	USC+GS DISK IN CONC POST @ QUARTZ HILL AIRPORT WIND INDICATOR 90FT S OF E-W RUNWAY MKD (H 489 1955)	SL 174A
BASELINE (1955)	2452.575	USC+GS DISK IN CONC GASOLINE STAND 150FT E OF SE COR OF HANGAR @ QUARTZ HILL AIRPORT MKD (J 489 1955)	SL 175A
LANCASTR (1962)	2450.690	L+T NE COR CONC CB HSE NO 42349 45TH ST W 185FT S + 50FT W C/L INT AVE L-8 + 45TH ST W	SL 176
LANCASTR (1962)	2461.654	L+T NE COR CONC SLAB HSE NO 42357 50TH ST W 100FT W + 60FT S C/L INT 50TH ST W + AVE L-8	SL 177
LANCASTR (1962)	2477.701	L+T CONC WLK IN FR OF CHURCH 45FT N + 65FT W C/L INT 50TH ST W + AVE L-12	SL 178
LANCASTR (1962)	2485.155	L+T CONC PORCH TELEPHONE BOOTH 50FT W + 45FT N C/L INT 50TH ST W + AVE L-14	SL 179
BASELINE (1955)	2495.032	L+T CONC SLAB SW COR PORCH TO HSE NO 42002 50TH ST W 48FT N + 66FT E C/L INT 50TH ST W + AVE M	SL 180A
LANCASTR (1962)	2428.444	L+T NE COR CONC WK HSE NO 42921 50TH ST W 71FT W + 390FT S C/L INT 50TH ST W + AVE K-12	SL 181
LANCASTR (1962)	2425.151	L+T N CONC DR HSE NO 42958 50TH ST W 44FT E + 60FT S C/L INT 50TH ST W + AVE K-12	SL 182
LANCASTR (1962)	2411.801	2IN IRON PIPE 6IN UP 40FT W OF C/L 50TH ST W ON C/L AVE K-8	SL 183
LANCASTR (1962)	2410.090	CS MON 18IN DN C/L INT 50TH ST W + AVE K-8 MKD (1/4 COR 25, 26) (USE E EDGE)	SL 184
LANCASTR (1962)	2380.077	CS MON 1FT DN C/L INT 50TH ST W + AVE K MKD (T7N R13W COR SEC 23, 24, 25, 26, 1927) (W EDGE)	SL 185
LANCASTR (1962)	2382.336	L+T NW COR CONC PORCH HSE NO 4849 AVE K 115FT E + 120FT N C/L INT AVE K + 50TH ST W	SL 186

QUAD-YEAR	ELEV	DESCRIPTION (INCLUDE QUAD AND YEAR IN DESCRIPTION)	BM NUMBER
LANCASTR (1962)	2378.086	SPK + L E SIDE WIER BOX 375FT N + 25FT W C/L INT AVE K + 45TH ST W	SL 187
LANCASTR (1962)	2376.824	L+T CONC STEP TO BACK OF HSE 425FT N + 85FT W C/L INT AVE K + 45TH ST W	SL 188
LANCASTR (1962)	2350.598	RDBM TAG S SIDE WIER BOX 97FT E + 85FT N C/L INT AVE J + 45TH ST W (TO THE N)	SL 191
LANCASTR (1962)	2349.253	RDBM TAG IN CONC SLAB 130FT S OF C/L AVE J + 216FT E OF C/L 45TH ST W TO THE N	SL 192
LANCASTR (1962)	2347.427	L+T IN CONC WLK TO HSE NO 4320 AVE J + 100FT S OF C/L AVE J + 500FT E OF 45TH ST W	SL 193
LANCASTR (1962)	2344.061	ENG TAG + BRAD IN 2IN IP RP TO C/L INT 3IN UP @ SW COR AVE J + 40TH ST W 50FT S + 50FT W C/L INT	SL 194A
LANCASTR (1962)	2344.121	CS MON IN WELL 8IN DN @ C/L INT AVE J + 40TH ST W MKD (T7N, R12W 13-18-19-24) USE N EDGE	SL 195A
LANCASTR (1962)	2341. 103 ⁸¹²	L+T CONC SLAB IN FRONT OF CHURCH @ NE COR AVE J + 35TH ST W 130FT N + 835FT E C/L INT MKD (BM)	SL 196A
LANCASTR (1962)	2341.103	L+T IN CONC @ ENTRANCE TO CHICKEN HOUSE 100FT E OF HSE NO 3829 W AVE J + 120FT N C/L AVE J + 0.5 MI E OF 40TH ST W	SL 197
LANCASTR (1962)	2342.312	L+T IN SE COR CONC PORCH TO HSE NO 3129 W AVE J + 75FT N OF C/L AVE J + 0.85 MI E OF 40TH ST W	SL 198
LANCASTR (1962)	2342.008	PM IN DIAMOND ON SMH RIM IN NW QUAD 385FT E HSE NO 3129 W AVE J 90FT E OF PP NO 800770E + 0.95 MI E OF 40TH ST W	SL 199
LANCASTR (1962)	2338.728	CS MON 18IN DEEP NR C/L AVE J + 25TH ST W MKD 1/4 COR SEC 17, 20 T7N (USE N EDGE)	SL 200
LANCASTR (1962)	2340.162	PM IN DIAMOND ON SMH RIM IN THE SW QUAD 15FT N C/L AVE J + 6FT W C/L 25TH ST W	SL 201
BASELINE (1955)	2523.621	CS MON @ C/L INT OF AVE M + 90TH ST E T6N T7N R10W SEC COR 31,32-5(6 1925 USE N EDGE)	SL 246A
LANCASTR (1962)	2525.746	RDBM TAG @ S SIDE OF CONC BASE OF OLD WELL 150FT W C/L 90TH ST E 80FT N C/L AVE M PROD	SL 247A
LANCASTR (1962)	2496.287	CS MON IN WELL @ C/L INT AVE L + 90TH ST E MKD (T7N R10W, SEC COR 29,30,31,32)	SL 254A
LANCASTR (1962)	2476.384	L+T NR E EDGE OF 14IN STANPIPE W/BREATHING PIPE 60FT W C/L 90TH ST E + 40FT N C/L AVE K	SL 262A
LANCASTR (1962)	2473.663	CS MON W/BR CAP @ C/L INT AVE K + 90TH ST E T7N R10W SEC 19,20,29,30	SL 263A
LANCASTR (1962)	2455.732	CS MON W/BR CAP @ C/L INT AVE J-8 + 90TH ST E R10W T7N 19,20 1/4 SEC	SL 266A
LANCASTR (1962)	2458.645	L+T SE COR CONC PORCH OF HSE NO 44005 90TH ST E 85FT W C/L + 40FT N C/L AVE J-8	SL 267A
LANCASTR (1962)	2451.326	L+T N END 1ST STEP OF PORCH OF HSE NO 44283 90TH ST E 100FT W C/L + 1000FT S AVE J	SL 269A
LANCASTR (1962)	2445.446	L+T NR SE EDGE CONC BASE NR CTR OF GAS PUMP IS1 60FT W C/L 90TH ST E + 60FT N C/L AVE J	SL 270A

QUAD-YEAR	ELEV	DESCRIPTION (INCLUDE QUAD AND YEAR IN DESCRIPTION)	BM NUMBER
LANCASTR (1962)	2443.661	CS MON 15IN DN @ C/L INT 90TH ST E + AVE J T7N R10W SEC COR 18,17,19,20	SL 271B
LANCASTR (1962)	2434.156	L+T NR E EDGE CONC PORCH HSE NO 44709 90TH ST E 6FT N OF S EDGE OF PORCH 2200FT N AVE J	SL 273A
LANCASTR (1962)	2428.003	CS MON 20IN DN @ C/L 90TH ST E 1/4 SEC 17,18 T7N R10W 0.5 MI N OF AVE J	SL 274B
LANCASTR (1962)	2415.146	CS MON 12IN DN @ C/L INT 90TH ST E + AVE I (R10W T7N COR SEC 7,8,17,18)	SL 278B
LANCASTR (1962)	2417.835	L+T @ SE COR CONC SIDE OF WTR DITCH 140FT W C/L 90TH ST E + 40FT N C/L AVE I	SL 279A
LANCASTR (1962)	2343.067	RDBM TAG IN S END OF GAS PUMP IS1 @ NE COR 90TH ST E + AVE E 75FT N + 80FT E C/L INT	SL 282A
LANCASTR (1962)	2402.781	CS MON IN CONC SQ 2IN UP 3FT S PP NO 991755E 39FT S AVE I + 70FT W 70TH ST E MKD (BM 107-30 1961 RE 58-69)	SL 283A
LANCASTR (1962)	2413.729	CS MON IN CONC SQ 2IN UP 1FT N TP NO K3143Y 30FT N C/L AVE I + 27FT W 85TH ST E PROP .5 MI W 90TH ST E MKD (BM 107-27 1961 RE 58-69)	SL 284A
LANCASTR (1962)	2415.388	CS MON 2FT S PP NO 991781E 30FT S C/L AVE I + 47FT W C/L 80TH ST E MKD (BM 107-28 1961 RE 58-69)	SL 285A
LANCASTR (1962)	2394.992	CS MON W/BR CAP @ C/L INT AVE H + 90TH ST E R10W T7N COR SEC 5,6,7,8	SL 286A
LANCASTR (1962)	2396.465	RDBM TAG @ CTR OF OLD CONC BASE OF MTR MOUNT 40FT W C/L 90TH ST E + 100FT N C/L AVE H	SL 287A
LANCASTR (1962)	2411.997	CS MON @ C/L OF AVE I 0.5 MI W OF 90TH ST E R10W T7N SEC 7-18	SL 288A
LANCASTR (1962)	2413.492	RDBM TAG @ SE COR OF CONC SLAB OF WATER TANK HSE 60FT N C/L AVE I 0.5 MI W OF 90TH ST E @ HSE NO 8359 AVE I	SL 289A
LANCASTR (1962)	2418.732	RDBM TAG TOP OF CONC SUPPORT OF 1GE WATER TANK 90FT N C/L AVE I + 45FT W C/L 80TH ST E	SL 290
LANCASTR (1962)	2416.896	L+T @ SW COR OF CONC WLK TO HSE NO 7848 AVE I 200FT W C/L 80TH ST E + 80FT N C/L AVE I	SL 291
LANCASTR (1962)	2405.371	L+T W SIDE OF RIM OF 12IN STAND PIPE 50FT E OF PRIVATE ROAD TO THE N + 50FT N C/L AVE I 0.5 MI W OF 80TH ST E	SL 292
LANCASTR (1962)	2409.069	L+T @ NE COR OF WEIR BOX 3FT UP 70FT N C/L AVE I + 10FT W OF PRIVATE RD 0.5 MI W OF 80TH ST E N OF ELECT WATER PUMP + 45FT NW OF PP NO 482171E	SL 293
LANCASTR (1962)	2405.377	CS MON IN CONC SQ FLUSH 15FT W PP NO 482159E 25FT S C/L AVE I + 25 W C/L 75TH ST E 0.5 MI E 70TH ST E MKD (BM 107-29 1961 RE 58-69)	SL 294A
LANCASTR (1962)	2402.243	L+T @ W END CONC WLK TO HSE NO 7040 AVE I 55FT S C/L AVE I + 400FT E OF 70TH ST E	SL 295
LANCASTR (1962)	2402.433	L+T S EDGE CONC WLK TO HSE NO 7030 AVE I 55FT S C/L AVE I + 300FT E 70TH ST E	SL 296
LANCASTR (1962)	2400.829	CS MON IN CONC 2IN UP 33FT S C/L AVE I + 142FT W C/L 65TH ST E 3FT S PP NO 1121124 MKD (S BM 107-31, RE 5869, 1961)	SL 297A

QUAD-YEAR	ELEV	DESCRIPTION (INCLUDE QUAD AND YEAR IN DESCRIPTION)	BM NUMBER
LANCASTR (1962)	2403.981	RDBM TAG TOP OF CONC WEIR BOX 35FT N C/L AVE I 400FT E OF 65TH ST E 50FT E OF DRWY TO HSE NO 6535 AVE I	SL 298
LANCASTR (1962)	2402.760	L+T E CB DRWY HSE NO 6007 AVE I 40FT N + 100FT E C/L INT E AVE I + 60TH ST E	SL 299A
LANCASTR (1962)	2402.665	L+T W CB DRWY HSE NO 6007 AVE I 42FT N + 90FT E C/L INT E AVE I + 60TH ST E	SL 300A
LANCASTR (1962)	2395.219	L+T W END CONC GARAGE SLAB HSE NO 5347 AVE I 130FT N + 210FT W C/L INT AVE I + 55TH ST E	SL 301
LANCASTR (1962)	2395.136	L+T S END CONC PORCH HSE NO 5335 AVE I 140FT N + 325FT W C/L INT AVE I + 55TH ST E	SL 302
LANCASTR (1962)	2390.850	L+T W END 1ST HSE NO 5018 AVE I 90FT S + 165FT E C/L INT AVE I + 50TH ST E	SL 303
LANCASTR (1962)	2390.726	CS MON (WITNESS COR) CS MON 30FT N + 30FT E C/L INT AVE I + 50TH ST E MKD T7N R11W SEC 9-10- 15-16 (USE N EDGE)	SL 304
LANCASTR (1962)	2387.319	2IN IP 1FT ABOVE GROUND 40FT S OF C/L INT AVE I + 45TH ST E (USE E EDGE)	SL 305
LANCASTR (1962)	2385.030	L+T NE COR CONC WLK HSE NO 4359 AVE I 100FT N + 80FT W C/L INT AVE I + 45TH ST E	SL 306
LANCASTR (1962)	2385.011	L+T NE COR CONC WLK HSE NO 4010 AVE I 90FT S + 140FT E C/L INT AVE I + 40TH ST E	SL 307
LANCASTR (1962)	2384.443	CS MON (WITNESS COR) 30FT S + 30FT W C/L INT AVE I + 40TH ST E	SL 308
LANCASTR (1962)	2382.865	L+T SE COR CONC SLAB @ NE COR BLDG NO 3606 AVE I 150FT E OF 36TH ST E	SL 309
LANCASTR (1962)	2383.925	RDBM TAG IN CONC HDWL 30FT N + 135FT W C/L INT AVE I + 35TH ST E	SL 310
LANCASTR (1962)	2380.703	CS MON IN CONC 2IN UP 29FT S + 67FT W C/L INT AVE I + 30TH ST E 3FT S PP NO 1219368 E MKD (BM 107-38, 1961, RE 5869)	SL 311A
LANCASTR (1962)	2376.636	CS MON IN WELL @ C/L INT AVE I + 25TH ST E PROPOSED 0.5 MI E 20TH ST E MKD (T7N, R11W, 1/4 COR 7-18)	SL 313A
LANCASTR (1962)	2376.326	L+T W END OF CONC WLK TO HSE NO 2243 AVE I 1FT E OF DIRT DRWY 133FT N C/L AVE I 800FT W OF 23RD ST E	SL 314
LANCASTR (1962)	2374.275	USGS MON W/BR CAP 6IN UP 30FT S + 35FT E C/L INT 20TH ST E + AVE I MKD (LS 11 1929)	SL 315
LANCASTR (1962)	2373.521	L+T SE COR OF CONC APRON OF GAS STA 55FT N C/L AVE I + 65FT W C/L 20TH ST E	SL 316
LANCASTR (1962)	2353.787	L+T IN NW COR OF 4FT SQ CONC SLAB AT NW COR HSE NO 44126 20TH ST W 1700FT S OF AVE J 68FT E OF C/L 20TH ST W	SL 319
LANCASTR (1962)	2357.660	CO SUR BR MON 18IN DN NR C/L INT 20TH ST E + AVE J-8 MKD (1/4 SEC COR)	SL 320
LANCASTR (1962)	2413.898	CS BR CAP MON 18IN DN @ C/L INT 20TH ST W + AVE K-8 MKD (1/4 COR SEC 29-28 T7N R12W)	SL 323

QUAD-YEAR	ELEV	DESCRIPTION (INCLUDE QUAD AND YEAR IN DESCRIPTION)	BM NUMBER
LANCASTR (1962)	2418.395	L+T IN CONC SLAB ON SE COR TO HSE NO 43141 20TH ST W 100FT W C/L + 260FT S C/L AVE K-8	SL 324
LANCASTR (1962)	2480.386	L+T IN CONC SLAB IN FRONT OF DOOR TO HSE NO42423 20TH ST W 100FT W C/L + 250FT N C/L AVE L-8	SL 327
LANCASTR (1962)	2481.862	CS BR CAP MON 18IN DN @ C/L INT OF 20TH ST W + AVE L-8 (USE N EDGE)	SL 328
LANCASTR (1962)	2520.732	RDBM TAG IN NE COR 3FT SQ CONC BASE TO GAS PUMP UNION 76 200FT N C/L AVE M + 125FT W C/L 20TH ST W	SL 329
BASELINE (1955)	2522.971	USC+GS GRASS DISK IN TOP OF CONC POST 4IN UP 208FT E OF C/L 20TH ST W + 33FT N C/L AVE M 5FT W OF PP NO 1054573-E MKD (D489 155)	SL 330A
BASELINE (1955)	2517.972	CS BR CAP MON @ C/L INT 25TH ST W + AVE M MKD (1/4 SEC COR 32-5 T6N R12W) USE W EDGE	SL 334A
BASELINE (1955)	2523.106	L+T IN SE COR OF CONC DR TO HSE NO 2524 AVE M 140FT S C/L + 215FT W C/L 25TH ST W	SL 335A
BASELINE (1955)	2519.926	BR DISK IN TOP OF CONC POST 4IN UP 300FT E C/L 30TH ST W + 34FT N C/L AVE M 6FT W PP NO 105459E	SL 336A
BASELINE (1955)	2514.635	CS BR CAP MON @ C/L INT AVE M + 30TH ST W MKD (SEC COR 31-32, 5-6 T7N R12W)	SL 337A
LANCASTR (1962)	2448.508	CS MON 24IN DN @ C/L INT OF AVE L + 25TH ST W 1/4 SEC COR 29 + 32 (USE NW COR)	SL 382
LANCASTR (1962)	2448.708	L+T IN BOTTOM STEP @ W EDGE OF CONC STEPS TO HSE NO 2507 AVE L 73FT N C/L + 78FT W C/L 25TH ST W	SL 383
LANCASTR (1962)	2441.018	CS MON 18IN DN @ C/L INT OF AVE L + 30TH ST W SEC COR MKD (T7N R12W 29,30,31,32) USE SE COR	SL 384
LANCASTR (1962)	2441.022	L+T NE COR CONC DR TO HSE NO 3018 AVE L 76FT S C/L + 203FT W C/L 30TH ST W	SL 385
LANCASTR (1962)	2434.793	L+T NW COR CONC SLAB TO HSE NO 3550 AVE L 65FT S C/L + 135FT E C/L 35TH ST W	SL 386
LANCASTR (1962)	2433.157	CS MON 6IN DN @ C/L INT AVE L + 35TH ST W 1/4 SEC COR T7N R12W SEC 30,31 (USE S EDGE)	SL 387
LANCASTR (1962)	2428.209	CS MON 8IN DN @ C/L INT OF AVE L + 40TH ST W MKD (T7N R13W, SEC 25-30, 36-31)	SL 388
LANCASTR (1962)	2431.674	L+T IN W EDGE OF 2FT CONC WLK TO APT NO 4012 AVE L 50FT S C/L + 110FT W C/L 40TH ST W	SL 389
LANCASTR (1962)	2428.223	USGS MON @ NW COR AVE L + 45TH ST W 36FT N + 36FT W C/L INT MKD (RESET R49 1942)	SL 391
LANCASTR (1962)	2432.224	L+T IN CONC PORCH OF HSE ON NW COR 50TH ST W + AVE L 109FT N + 232FT W C/L INT MKD (BM)	SL 392
LANCASTR (1962)	2438.204	RDBM TAG N CB OF DR TO BRICK BLDG NO 42727 50TH W 50FT W C/L + 380FT S C/L AVE L	SL 393
BASELINE (1955)	2491.041	CS MON IN WELL 14IN DN @ C/L INT AVE M + 50TH ST W (USE N EDGE)	SL 394
BASELINE (1955)	2496.373	CS MON IN WELL 15IN DN @ C/L INT OF AVE M + 55TH ST W MKD (1/4 CCR SEC 35, 2 R-13W T-7N T-6N) USE S EDGE	SL 395

QUAD-YEAR	ELEV	DESCRIPTION (INCLUDE QUAD AND YEAR IN DESCRIPTION)	BM NUMBER
BASELINE (1955)	2500.603	L+T IN CONC WLK TO HSE SW COR AVE M + 55TH ST W 57FT S + 34FT W C/L INT	SL 396
BASELINE (1955)	2513.654	CS MON IN WELL 22IN DN @ C/L INT OF AVE M + 60TH ST W	SL 397
LANCASTR (1962)	2385.020	CS MON IN WELL 18IN DN @ C/L INT 60TH ST E + AVE H-8 PROP MKD (1/4 SEC COR SEC 11 + 10 R11W T7N)	SL 411
LANCASTR (1962)	2388.117	RDBM TAG IN SE COR CONC RESERVOIR @ HSE NO 45609 60TH ST E 110FT W C/L + 55FT N C/L AVE H-8 PROP	SL 412
LANCASTR (1962)	2372.643	CS MON IN WELL 18IN DN @ C/L INT 60TH ST E + AVE H MKD (SEC COR SEC 3-2-10-11 R11W T7N)	SL 413
LANCASTR (1962)	2372.270	L+T IN NE COR CONC SLAB FOR GAS PUMP 360FT N C/L AVE H + 175FT W C/L 60TH ST E MKD (SLBM)	SL 414
LANCASTR (1962)	2362.622	CS MON 18IN DN @ C/L INT 60TH ST E + AVE G-8 MKD (1/4 SEC COR SEC 3-2 R11W T7N)	SL 415
LANCASTR (1962)	2363.834	L+T NR S EDGE OF CONC WK TO HSE NO 46415 60TH ST E 130FT W/O C/L + 145FT N C/L AVE G-8 MKD (SLBM)	SL 416
LANCASTR (1962)	2353.727	CS MON 16IN DN @ C/L INT 60TH ST E + AVE G MKD (SEC COR SEC 34-35-3-2 R11W T8N)	SL 417
LANCASTR (1962)	2356.077	RDBM TAG IN 10IN CONC PIPE HOLDING 2IN IP VENT 60FT W C/L 60TH ST E + 193FT N C/L AVE G	SL 418
LANCASTR (1962)	2346.676	L+T IN CONC FENCE POST @ SE COR 60TH ST E + AVE F-8 20FT S + 22FT E C/L INT MKD (SLBM)	SL 419
LANCASTR (1962)	2345.040	CS MON @ C/L INT 60TH ST E + AVE F-8 MKD (1/4 SEC COR SEC 34-35 R11W T8N)	SL 420
LANCASTR (1962)	2337.996	L+T BOTTOM STEP TO PORCH OF HSE @ NW COR 60TH ST E + AVE F 103FT N + 14FT W C/L INT	SL 421
LANCASTR (1962)	2337.702	RD MON 8IN DN @ SW COR AVE F + 60TH ST E 5FT E TP NO K5056Y 47FT W + 25FT S C/L INT	SL 422
LANCASTR (1962)	2339.443	CS MON 20IN DN @ C/L INT AVE F + 65TH ST E MKD (1/4 SEC COR SEC 26-35 R11W T8N)	SL 423
LANCASTR (1962)	2340.234	RD MON IN WELL WITH COVER @ NE COR 65TH ST E + + AVE F 24FT N + 42FT E C/L INT 4FT E GUY POLE NO 627428E	SL 424
LANCASTR (1962)	2344.575	RD MON IN WELL W/COVER 8IN DN @ NW COR AVE F + 70TH ST E 34FT N + 25FT W C/L INT 4FT N OF PP NO 373290E	SL 425
LANCASTR (1962)	2344.144	CS MON 16IN DN @ C/L INT AVE F + 70TH ST E MKD (SEC COR SEC 26-25-35-36 R11W T8N)	SL 426
LANCASTR (1962)	2349.634	L+T IN CONC FTG OF 36IN STAND-PIPE 40FT N C/L AVE F + 31FT W C/L 75TH ST E PROP MKD (SLBM)	SL 427
LANCASTR (1962)	2348.734	CS MON 30IN DN @ C/L INT AVE F + 75TH ST E MKD (1/4 SEC COR SEC 25-36 R11W T8N)	SL 428
LANCASTR (1962)	2351.640	L+T IN CONC MOTOR PAD @ NW COR AVE F + 80TH ST E PROP 50FT N + 100FT W C/L INT MKD (SLBM)	SL 429
LANCASTR (1962)	2350.126	CS MON @ C/L INT AVE F + 80TH ST E MKD (SEC COR SEC 25-30-36-31 R10W R11W T8N)	SL 430

QUAD-YEAR	ELEV	DESCRIPTION (INCLUDE QUAD AND YEAR IN DESCRIPTION)	BM NUMBER
LANCASTR (1962)	2353.209	L+T W CB OF DR TO HSE NO 8367 AVE F 55FT N C/L + 120FT W 85TH ST E PROP 0.5 MI W 90TH ST E	SL 431A
LANCASTR (1962)	2352.305	BT SPK IN 2IN IP IN CONC 28IN DN @ C/L INT AVE F + 85TH ST E PROP (1/4 SEC COR 30-31 R10W T8N)	SL 432A
LANCASTR (1962)	2356.761	L+T IN CONC FOUNDATION OF WATER TOWER @ NW COR 90TH ST E + AVE F 45FT N + 95FT W C/L INT MKD (SLBM)	SL 433A
LANCASTR (1962)	2356.378	CS MON 12IN DN @ C/L INT 90TH ST E + AVE F MKD (SEC COR SEC 30-29-31-32 R10W T8N)	SL 434A
LANCASTR (1962)	2367.819	L+T 1ST STEP OF CONC PORCH OF APT UNIT NO 47205 @ THE NW COR 90TH ST E + AVE F-8 140FT W + 70FT N C/L INT	SL 435A
LANCASTR (1962)	2367.059	2IN IP WITH CONC PLUG + BT SPK @ C/L INT 90TH ST E + AVE F-8 1/4 SEC COR T8N R10W	SL 436A
LANCASTR (1962)	2374.844	CS M/N 15IN DN @ C/L INT 90TH ST E + AVE G MKD (SEC COR SEC 31-32-6-5 R10W T8N-T7N)	SL 437A
LANCASTR (1962)	2376.186	RD MON IN WELL WITH CONC COLLAR @ SE COR 90TH ST E + AVE G 30FT E + 40FT S C/L INT 5FT S PP BET PP NO 771448E + PP NO 771450E	SL 438A
LANCASTR (1962)	2387.408	2IN IP IN CONC WITH BR CAP ON C/L AVE G-8 30FT W C/L 90TH ST E MKD (WC SEC 6 R10W T7N)	SL 439A
LANCASTR (1962)	2385.702	2IN IP IN CONC WITH BR CAP ON C/L AVE G-8 30FT E C/L 90TH ST E MKD (WC SEC 5 R10W T7N)	SL 440A
BASELINE (1955)	2527.868	BR DISK IN CONC 6IN UP 35FT S OF AVE M 87FT W OF CTR W TRAFFIC LANES HWY 14 3FT S OF PP NO 1055176E MKD (FF487 1955)	SL 469
LANCASTR (1962)	2497.708	BR DISK IN CONC 3IN UP 2200FT S OF AVE L 44FT W OF C/L SPRR TRACKS 60FT E OF HWY 14 + ACROSS HWY FROM DR TO BLDG NO 42445 N SIERRA HWY MKD (U811 1947)	SL 470
LANCASTR (1962)	2486.498	BR DISK IN CONC 12IN DN 1250FT S OF AVE L 60FT E OF HWY 14 43FT W OF SPRR TRACKS + ACROSS HWY FROM DIRT ROAD 80FT S OF BLDG NO 42607 N SIERRA HWY MKD (B57 RESET 1955)	SL 471
LANCASTR (1962)	2447.374	BR DISK IN CONC 3IN UP 45FT W OF C/L SPRR TRACKS 200FT W OF L A CO WATER WKS DIST 4 WELL 8 STORAGE TANK (AVE K + DIVISION ST) 59FT E OF HWY 14 75FT N OF C/L AVE K-8 PROPOSED MKD (T811 1947)	SL 472
LANCASTR (1962)	2362.128	BR DISK IN CONC 5IN UP 0.25 MI S OF LANCASTER BLVD 48FT E OF C/L SPRR MAIN TRACK 85FT SE OF SE COR SEMAPHORE NO 4057 3FT S TP IN YARD OF MT WHITNEY LUMBER CO NO 44701 N YUCCA AVE MKD (G487 1955)	SL 473
LANCASTR (1962)	2334.334	BR CAP ON 3IN IP 8IN UP 1100FT N OF AVE I IN A V PLUMBING SUPPLY YARD NO 45358 N SIERRA HWY 161FT E OF SIERRA HWY 120FT SE OF STUCCO BLDG IN YARD MKD (2335 B 1902)	SL 474
LANCASTR (1962)	2318.474	BR DISK IN S EDGE CONC HDWL OF CULVERT NO 690-50 25FT W OF C/L HWY 14 1.6MI N OF AVE I MKD (Z811 1947)	SL 476

QUAD-YEAR	ELEV	DESCRIPTION (INCLUDE QUAD AND YEAR IN DESCRIPTION)	BM NUMBER
LANCASTR (1962)	2306.391	BR DISK IN CONC 10IN UP 1450FT S AVE F 34FT E OF C/L HWY 14 99FT W OF C/L SPRR TRACKS MKD (Y56 1926)	SL 477
LANCASTR (1962)	2302.978	BR CAP ON 3IN IP 8IN UP 85FT E C/L HWY 14 48FT W C/L SPRR TRACKS 800FT N AVE F MKD (2302 B 1902 33)	SL 478
LANCASTR (1962)	2305.079	BR TRI STA DISK IN CONC 15IN UP 2200FT N AVE F 227FT W C/L HWY 14 81FT S OBAN RM2 45FT NW OF OBAN RM 1 BRONZE DISKS IN CONC MKD (OBAN 1929 LINT)	SL 479
LANCASTR (1962)	2302.316	BR DISK IN CONC 8IN UP 2280FT N OF AVE F 81FT N OF OBAN TRI STA (SL 479 BRONZE DISK IN CONC) 227FT W OF C/L HWY 14 MKD (OBAN NO 2 1941)	SL 480
LANCASTR (1962)	2301.631	BR DISK FLUSH W END S CONC ABUT OF RR BRIDGE 73FT N OF C/L AVE E + 12FT W OF C/L SPRR TRACKS MKD (H487 1955)	SL 481
LANCASTR (1962)	2304.446	BR DISK FLUSH TOP OF E END OF S CONC ABUT OF RR BRIDGE 88FT N OF C/L AVE C + 10FT E OF C/L SPRR TRACKS MKD (J487 1955)	SL 482
LANCASTR (1962)	2305.963	BR DISK FLUSH TOP S END OF W CONC HDWL CULVERT UNDER SPRR TRACKS 35FT N AVE B + 10FT W OF C/L TRACKS MKD (N487 1955)	SL 483
LANCASTR (1962)	2308.005	BR DISK FLUSH TOP N END HDWL OF CULVERT UNDER SPRR TRACKS 10FT W C/L TRACKS + 175FT S OF AVE A (KERN COUNTY LINE) MKD (M487 1955)	SL 484
LANCASTR (1962)	2335.465	RDBM TAG E CB LFT S OF N P/L CO FIRE ENG NO 17 20FT E C/L DIVISION ST 135FT S C/L AVE H-8 (PROPOSED) + 0.5 MI N AVE I	SL 485A
LANCASTR (1962)	2336.094	RDBM TAG NR SW COR CONC SLAB TO BLDG 60FT E OF C/L DIVISION ST + 0.5 MI N AVE I	SL 486
LANCASTR (1962)	2333.710	CS MON IN WELL 18IN DN @ C/L DIVISION ST 0.5 MI N AVE I MKD (1/4 SEC COR 10-11 T7NR12W) USE N EDGE	SL 487
LANCASTR (1962)	2334.260	CS MON 12IN DN @ C/L INT DIVISION ST + AVE H MKD (SEC COR 3-2 10-11 T7N R12W) USE W EDGE	SL 488
LANCASTR (1962)	2336.884	SPK+T IN TP NO 7032Y 60FT S + 45FT S C/L INT DIVISION ST + AVE H	SL 489
LANCASTR (1962)	2328.633	L+T NW COR OF CONC WK TO BLDG NO 6350 @ SE COR OF DIVISION ST + AVE G8 (PROP) 205FT S + 45FT E OF C/L INT	SL 490
LANCASTR (1962)	2326.624	CS BR CAP MON 24IN DN @ C/L INT OF AVE G8 PROP + DIVISION ST MKD (1/4 SEC COR 2-3 T7N R12W)	SL 491A
LANCASTR (1962)	2323.446	2IN IP WITH CONC PLUG 12IN UP @ SE COR DIVISION ST + AVE G 35FT S + 35FT E OF C/L INT USE E EDGE	SL 492
LANCASTR (1962)	2321.335	CS BR CAP MON IN WELL 15IN DN @ C/L INT DIVISION ST + AVE G MKD (SEC COR 34-35-3-2 T8N T7N R12W)	SL 493
LANCASTR (1962)	2315.890	L+T @ NE COR CONC SLAB @ SIDE ENT N SIDE OF HSE NO 47159 DIVISION ST 100FT W C/L + 80FT S C/L AVE F-8	SL 494
LANCASTR (1962)	2315.661	L+T @ NE COR CONC SLAB @ SIDE ENT ON N SIDE OF HSE NO 47205 DIVISION ST 100FT W C/L + 115FT N C/L AVE F-8	SL 495

QUAD-YEAR	ELEV	DESCRIPTION (INCLUDE QUAD AND YEAR IN DESCRIPTION)	BM NUMBER
LANCASTR (1962)	2309.092	L+T CONC WK TO HSE NO 47547 DIVISION ST @ SW COR OF AVE F 82FT W + 185FT S OF C/L INT MKD (SL BM)	SL 496
LANCASTR (1962)	2307.207	CS MON 14IN DN @ C/L INT OF AVE F + DIVISION ST MKD (SEC COR 26-27 34-35 R12W T8N)	SL 497
LANCASTR (1962)	2301.831	CS BR CAP MON 14IN DN @ C/L INT AVE E-8 + DIVISION ST MKD (26-27 R12W T8N)	SL 498
LANCASTR (1962)	2296.472	RD DEPT BM MON IN WELL 6IN DN @ SW COR DIVISION ST + AVE E 27FT W + 51FT S C/L INT 4 FT WLY PP NO 306431E	SL 499
LANCASTR (1962)	2294.928	CS MON 18IN DN @ C/L INT OF DIVISION ST + AVE E MKD (22-23-26-27)	SL 500
LANCASTR (1962)	2296.627	CS MON 14IN DN ON C/L AVE E 2677FT W OF DIVISION ST MKD (T8N 22-27 R12W 1/4 COR)	SL 501
LANCASTR (1962)	2349.079	RDBM TAG CONC SLAB NR 36IN STANDPIPE 40FT N C/L AVE J + 500FT E 50TH ST W	SL 532
LANCASTR (1962)	2348.284	CS MON 18IN DN @ C/L INT AVE J + 50TH ST W MKD (SEC COR 13-14 23-24 T7N R13W) USE N EDGE	SL 533
LANCASTR (1962)	2338.146	2IN IP 6IN DN RP TO 1/4 SEC COR 13-14 R13W T7N 50FT S 50FT E OF 1/4 COR	SL 534
LANCASTR (1962)	2338.017	2IN IP 6IN DN RP TO 1/4 SEC COR 13-14 R13W T7N 50FT N + 50FT E 1/4 COR	SL 535
LANCASTR (1962)	2330.085	CS MON IN TOP 12IN CONC POST 5IN UP 89FT N C/L AVE I 30FT E C/L 45TH ST W 4.1 MI W SIERRA HWY 30FT N PP NO 864989E MKD (BM 102-9 1957 RE 5869)	SL 537
LANCASTR (1962)	2328.521	USC+GS DISC TOP 8IN CONC POST 12IN UP 147FT S C/L AVE I 3.6MI W SIERRA HWY 33FT E SLY PROD OF E SIDE HSE NO 4011 MKD (LINT ALKALI 1929)	SL 538
LANCASTR (1962)	2318.914	CS MON TOP 12IN CONC POST 6IN UP 42FT N C/L AVE I 3.1 MI W SIERRA HWY 39FT DRWY TO HSE NO 3355 25FT W PP NO 865024E MKD (BM 102-7 RE 5869)	SL 539
LANCASTR (1962)	2318.676	L+PK TOP NW COR N HDWL OF BRIDGE NO 53-406 40FT N C/L AVE I 2.6 MI W SIERRA HWY	SL 540
LANCASTR (1962)	2315.909	USC+GS DISC TOP 8IN CONC POST 3IN UP 70FT N C/L AVE I 2.6 MI N SIERRA HWY 93FT NW OF W END HDWL OF BRIDGE NO 53-406 29FT N TP NO K4279Y MKD (N747 1945)	SL 541
LANCASTR (1962)	2318.028	CS MON TOP CONC POST 4IN UP 86FT N C/L AVE I + 23FT E C/L 25TH ST W + 4FT S PP NO 1162700E MKD (BM 102-5 1957 RE 5869)	SL 542
LANCASTR (1962)	2452.713	RDBM TAG CONC LID OF FLAT JUNCTION BOX 250FT W C/L 100TH ST E + 36FT N C/L AVE J	SL 545A
LANCASTR (1962)	2449.791	L+T 2IN DN @ C/L INT AVE J + 100TH ST E	SL 546
LANCASTR (1962)	2467.226	RDBM TAG CONC PUMP BASE (OLD) 60FT W C/L 100TH ST E + 130FT N C/L AVE J-8	SL 547
LANCASTR (1962)	2464.754	CS MON 14IN DN @ C/L INT 100TH ST E + AVE J-8 MKD (1/4 SEC COR 20-21 R-10-W T-7-N)	SL 548

QUAD-YEAR	ELEV	DESCRIPTION (INCLUDE QUAD AND YEAR IN DESCRIPTION)	BM NUMBER
LANCASTR (1962)	2478.523	CS MON 12IN DN @ C/L INT 100TH ST E + AVE K MKD (T7N R10W 20-21-28-29 SEC COR)	SL 549
LANCASTR (1962)	2480.220	L+T CONC PORCH TO HSE NO 9861 40FT N + 45FT W C/L INT 100TH ST E + AVE K	SL 550
LANCASTR (1962)	2475.263	RDBM TAG ON RIM OF CONC STAND PIPE 33FT N C/L AVE K + 33FT E C/L 95TH ST E (PROP)	SL 551
LANCASTR (1962)	2474.839	CS MON 18IN DN ON C/L INT PROP 95TH ST E + AVE K MKD (1/4 COR T7N R10W 20-29) USE S EDGE	SL 552
LANCASTR (1962)	2369.847	2IN IP 50FT E C/L 30TH ST E + 50FT S C/L AVE H-8 USE W RIM	SL 553
LANCASTR (1962)	2369.430	CS MON 12IN DN @ C/L INT 30TH ST E + AVE H-8 MKD (1/4 COR 7-8 T7N R11W)	SL 554
LANCASTR (1962)	2362.441	2IN IP 50FT E C/L 30TH ST E + 50FT S C/L AVE H USE SW RIM	SL 555
LANCASTR (1962)	2360.079	CS MON 6IN DN @ C/L INT 30TH ST E + AVE H MKD (SEC COR 5-6-7-8 T7N R11W) USE S EDGE	SL 556
LANCASTR (1962)	2353.970	2IN IP 50FT E C/L 30TH ST E + 50FT S C/L AVE G-8 USE SE RIM	SL 557
LANCASTR (1962)	2351.002	CS MON 8IN DN @ C/L INT 30TH ST E + AVE G-8 MKD (1/4 SEC COR 6-7 T7N R11W) USE S EDGE	SL 558
LANCASTR (1962)	2344.568	2IN IP 50FT E C/L 30TH ST E + 50FT S C/L AVE G USE S EDGE	SL 559
LANCASTR (1962)	2343.622	CS MON 3IN DN @ C/L INT 30TH ST E + AVE G MKD (31-32-5-6 T7N R11W) USE SW EDGE	SL 560
LANCASTR (1962)	2335.079	CS MON 12IN DN @ C/L INT 30TH ST E + AVE F-8 MKD (1/4 COR 31-32 T8N R11W)	SL 561
LANCASTR (1962)	2336.396	2IN IP 50FT E C/L 30TH ST E + 50FT N C/L AVE F-8 USE NE RIM	SL 562
LANCASTR (1962)	2328.798	2IN IP 50FT E C/L 30TH ST E + 50FT S C/L AVE F	SL 563
LANCASTR (1962)	2327.471	CS MON 15IN DN @ C/L INT 30TH ST E + AVE F MKD (29-30-31-32 T8N R11W) USE E EDGE	SL 564
LANCASTR (1962)	2321.983	2IN IP 50FT E C/L 30TH ST E + 50FT S C/L AVE E-8 USE E RIM	SL 565
LANCASTR (1962)	2318.984	CS MON 15IN DN @ C/L INT 30TH ST E + AVE E-8 MKD (1/4 COR 29-30 T8N R11W) USE E EDGE	SL 566
LANCASTR (1962)	2297.868	RD MON IN WELL 8IN DN 5FT S PP NO 1270585E 36FT S C/L AVE E 240FT W (1/4 SEC COR 23-26 T8N R12W)	SL 567
LANCASTR (1962)	2298.000	CS MON 15IN DN @ C/L INT AVE E + 5TH ST E (PROPOSED) MKD (1/4 COR 23-26 T8N R12W)	SL 568
LANCASTR (1962)	2301.070	CS MON 18IN DN @ C/L INT AVE E (PROPOSED) MKD (SEC COR 23-24-25-26 T8N R12W)	SL 569
LANCASTR (1962)	2302.801	RD MON IN WELL 8IN DN 6FT S PP NO 1270596E 36FT S C/L AVE E 70FT E C/L 10TH ST E (PROPOSED) MKD (SEC COR 23-24-25-26 T8N R12W)	SL 570
LANCASTR (1962)	2302.427	RD MON IN WELL 8IN DN 5FT S PP NO 1270605E 40FT S C/L AVE E 240FT W C/L 15TH ST E (PROPOSED) MKD (1/4 COR 24-25 T8N R12W)	SL 571

QUAD-YEAR	ELEV	DESCRIPTION (INCLUDE QUAD AND YEAR IN DESCRIPTION)	BM NUMBER
LANCASTR (1962)	2302.974	CS MON 30IN DN @ C/L INT AVE E + 15TH ST E MKD (1/4 COR 24-25 T8N R12W)	SL 572
LANCASTR (1962)	2307.184	CS MON 24IN DN @ C/L INT AVE E + 20TH ST E MKD (SEC COR 19-20-29-30 T8N R11/12W)	SL 573
LANCASTR (1962)	2308.860	RD MON IN WELL 8IN DN 6FT S PP NO 1270616E 39FT S C/L AVE E 70FT E C/L 20TH ST E (PROPOSED) MKD (SEC COR 19-20-29-30 T8N R11/12W)	SL 574
LANCASTR (1962)	2308.853	CS MON 30IN DN @ C/L INT AVE E + 25TH ST E (PROPOSED) MKD (1/4 COR 19-30 T8N R11W) USE S EDGE	SL 575
LANCASTR (1962)	2310.532	RD MON IN WELL 8IN DN 6FT S PP NO 1270627E 39FT S C/L AVE E 225 E C/L 25TH ST E (PROPOSED) MKD (1/4 COR 19-30 T8N R11W)	SL 576
LANCASTR (1962)	2312.048	2IN IP 50FT E C/L 30TH ST E + 50FT S C/L AVE E USE N RIM	SL 577
LANCASTR (1962)	2310.583	CS MON 15IN DN @ NR C/L INT 30TH ST E + AVE E MKD (SEC COR 19-20-29-30 R11W) USE S EDGE	SL 578
LANCASTR (1962)	2313.890	RD MON IN WELL 8IN DN 5FT S PP NO 1270648E 28FT S C/L AVE E 260FT W C/L 35TH ST E (PROPOSED) MKD (1/4 COR 20-29 T8N R11W)	SL 579
LANCASTR (1962)	2313.103	CS MON 24IN DN @ C/L INT AVE E + 35TH ST E (PROPOSED) MKD (1/4 COR 20-29 T8N R11W) USE N RIM	SL 580
LANCASTR (1962)	2316.144	RD MON IN WELL 8IN DN 5FT S PP NO 1273708E 30FT S C/L AVE E + 250FT W C/L 40TH ST E (PROPOSED) MKD (SEC COR 20-21-29-30 T8N R11W)	SL 581
LANCASTR (1962)	2314.327	CS MON 18IN DN @ C/L INT AVE E + 40TH ST E (PROPOSED) MKD (SEC COR 20-21-29-30 T8N R11W) USE N EDGE	SL 582
LANCASTR (1962)	2314.584	CS MON IN WELL 18IN DN @ C/L INT AVE E + 45TH ST E (PROPOSED) MKD (1/4 COR 21-28 T8N R11W) USE N EDGE	SL 583
LANCASTR (1962)	2316.511	L+T SE COR CONC PORCH HSE NO 4519 AVE E 105FT N C/L 210FT E C/L 45TH ST E (PROPOSED) MKD (1/4 COR 21-28 T8N R11W)	SL 584
LANCASTR (1962)	2317.020	CS MON IN WELL 8IN DN @ C/L INT AVE E + 50TH ST E MKD (SEC COR 21-22-27-28 T8N R11W) USE N EDGE	SL 585
LANCASTR (1962)	2318.563	2IN IP 50FT N C/L 50TH ST E + 50FT E C/L AVE E USE N EDGE PUNCH MARK	SL 586
LANCASTR (1962)	2321.058	CS MON IN WELL 8IN DN @ C/L INT AVE E + 55TH ST E USE N RIM	SL 587
LANCASTR (1962)	2322.244	L+T IN CONC STAND PIPE 33FT E AVE E + 40FT N C/L 55TH ST E MKD (BM)	SL 588
LANCASTR (1962)	2321.932	CS MON IN WELL 8IN DN @ C/L INT AVE E + 60TH ST E MKD (SEC COR 22-23-26-27 T8N R11W) USE N EDGE	SL 589
LANCASTR (1962)	2322.207	L+T IN CONC SLAB OF GARAGE TO HSE ON NW COR AVE E + 60TH ST E 145FT N C/L INT MKD (BM)	SL 590
LANCASTR (1962)	2329.593	CS MON IN WELL 18IN DN @ C/L INT AVE E-8 + 60TH ST E MKD (1/4 COR 26-27 T8N R11W)	SL 591

QUAD-YEAR	ELEV	DESCRIPTION (INCLUDE QUAD AND YEAR IN DESCRIPTION)	BM NUMBER
LANCASTR (1962)	2331.005	L+T CONC PUMP BASE 35FT N 60TH ST E + 170FT E C/L AVE E-8 MKD (1/4 COR 26-27 T8N R11W) + (BM)	SL 592
LANCASTR (1962)	2340.308	L+T 4FT E BCR 38FT N C/L AVE I 50FT E C/L SIERRA HWY	SL 666
LANCASTR (1962)	2339.379	CS MON 64FT N C/L AVE I 40FT W OF W RAIL SPRR @ SIERRA HWY MKD (BM 101-132)	SL 667
LANCASTR (1962)	2342.881	L+T 5FT E OF W END CONC PUMP ISL 50FT E C/L TREVOR AVE 60FT S C/L AVE I	SL 668
LANCASTR (1962)	2342.537	L+T N CB (DEP) 24FT E C/L SPEARMAN AVE + 40FT N C/L AVE I	SL 669
LANCASTR (1962)	2357.709	L+T 10FT W BCR @ NW COR DIVISION ST + LANCASTER BLVD	SL 671
LANCASTR (1962)	2361.215	USC+GS BR CAP FLUSH IN SHELL OIL CO YARD 150FT N C/L NEWGROVE ST + 175FT E C/L SIERRA HWY MKD (A 57 1926)	SL 672
LANCASTR (1962)	2359.139	L+T CTR CB RET @ SE COR MILLING ST + YUCCA AVE	SL 673
LANCASTR (1962)	2365.718	L+BRAD S CB 1FT W BCR 30FT S C/L LANCASTER BLVD 43FT W C/L 3RD ST E	SL 675
LANCASTR (1962)	2366.128	L+BRAD E CB 0.5FT S BCR 18FT E C/L 3RD ST E 54FT S C/L LANCASTER BLVD	SL 676
LANCASTR (1962)	2371.724	L+T S CB 3FT E BCR 30FT S C/L LANCASTER BLVD 51FT W C/L 5FT ST E	SL 677
LANCASTR (1962)	2372.576	L+T E CB 2FT S BCR 30FT E C/L 5TH ST E 63FT S C/L LANCASTER BLVD	SL 678
LANCASTR (1962)	2374.487	L+T S CB SERVICE RD 0.5 FT W BCR 70FT S C/L LANCASTER BLVD 50FT W C/L ANDALE AVE	SL 679
LANCASTR (1962)	2380.090	CS MON FLUSH 50FT S C/L AVE J 40FT W OF W RAIL SPRR @ SIERRA HWY MKD (BM 101-128)	SL 680
LANCASTR (1962)	2350.539	CS MON 27IN DN @ C/L INT AVE J + 55TH ST W (PROP) MKD (1/4 COR 14-23 R13W T7N)	SL 704
LANCASTR (1962)	2352.836	RDMON IN WELL 8IN DN ON SW COR AVE J + 55TH ST W (PROP) 100FT W + 50FT S C/L INT 2IN IP MARKER 2FT S 3FT UP	SL 705
LANCASTR (1962)	2353.843	CS MON IN WELL 18IN DN @ C/L INT AVE J + 60TH ST W MKD (SEC COR 14-15-22-23 T7N R13W)	SL 706
LANCASTR (1962)	2355.292	RDBM TAG IN COR OF FENCE ON NE COR AVE J + 60TH ST W 33FT N + 43FT E C/L INT	SL 707
LANCASTR (1962)	2348.071	CS MON IN WELL 10IN DN @ C/L INT 60TH ST W + AVE I-8 (PROP) MKD (1/4 COR 14-15 T7N R13W)	SL 708
LANCASTR (1962)	2346.744	RD MON IN WELL 8IN DN ON NW COR 60TH ST W + AVE I-8 (PROP) 95FT N + 50FT W C/L INT 2IN IP MARKER 2FT W 3FT UP	SL 709
LANCASTR (1962)	2349.289	USC+GS BR CAP IN CONC FLOOR OF GUARD HSE OF MIRA LOMA @ SE COR AVE I + 65TH ST W 125FT S 100FT E C/L INT MKD (U 1153 1961)	SL 710A
LANCASTR (1962)	2350.086	CS MON FLUSH ON SE COR AVE I + 60TH ST W 46FT S + 61FT E C/L INT MKD (CSBM NO 9)	SL 711

QUAD-YEAR	ELEV	DESCRIPTION (INCLUDE QUAD AND YEAR IN DESCRIPTION)	BM NUMBER
LANCASTR (1962)	2335.619	USC+GS BR CAP NR COR CONC HDWL @ SW COR AVE I + 50TH ST W 30FT S + 31FT W C/L INT MKD(T1153 1961)	SL 712A
LANCASTR (1962)	2342.626	RDBM TAG ON CONC COLLAR OF SMH (S SIDE) 46FT N C/L AVE I + 9FT E C/L 55TH ST W (PROP)	SL 713
LANCASTR (1962)	2334.330	RDBM TAG IN CONC FTG OF COR FENCE POST ON SW COR 50TH ST W + AVE I 40FT S + 60FT W C/L INT	SL 714
LANCASTR (1962)	2335.674	RDBM TAG IN CONC HDWL BETWEEN 2 CMP ON SW COR 50TH ST W + AVE I 35FT S + 26FT W C/L INT	SL 715
LANCASTR (1962)	2329.948	RDBM TAG ON CONC COLLAR OF SMH RIM NE COR AVE I + 45TH ST W 28FT N + 5FT E C/L INT	SL 716
LANCASTR (1962)	2327.839	CS MON 8IN UP ON SW COR AVE I + 40TH ST W 40FT S + 40FT W C/L INT MKD (WC)	SL 717
LANCASTR (1962)	2320.455	L+T IN CONC PORCH OF HSE @ NE COR AVE I + 35TH ST W 125FT N + 100FT E C/L INT MKD (BM)	SL 718
LANCASTR (1962)	2387.903	CS MON FLUSH ON SW COR AVE K + 20TH ST W 39FT S + 39FT W C/L INT MKD (BM 105-4 1958)	SL 719
LANCASTR (1962)	2388.228	L+T CONC DR NR CONC BLOCK POST 42FT S C/L AVE K + 263FT W C/L 25TH ST W MKD (BM)	SL 721
LANCASTR (1962)	2386.196	CS MON IN WELL 20IN DN @ C/L INT AVE K + 30TH ST W MKD (SEC COR 19-20-29-30 R12W T7N) USE E EDGE	SL 722
LANCASTR (1962)	2388.423	RD MON IN WELL 8IN DN ON SW COR AVE K + 30TH ST W 100FT W + 50FT S C/L INT	SL 723
LANCASTR (1962)	2385.545	RD MON IN WELL 8IN DN ON SE COR AVE K + 35TH ST W 100FT E + 50FT S C/L INT	SL 724
LANCASTR (1962)	2383.396	CS MON IN WELL 20IN DN @ C/L INT AVE K + 35TH ST W MKD (1/4 CCR 19-30 R12W T7N) USE S EDGE	SL 725
LANCASTR (1962)	2382.566	CS MON IN WELL 6IN DN @ C/L INT AVE K + 40TH ST W MKD (SEC COR 19-24-25-30 R12W T7N)	SL 726
LANCASTR (1962)	2382.713	L+T CONC PORCH OF HSE ON NW COR AVE K + 40TH ST W 124FT N + 90FT W C/L INT MKD (BM)	SL 727
LANCASTR (1962)	2360.405	RD MON IN WELL 8IN DN ON SE COR 30TH ST W + AVE J-8 100FT S + 50FT E C/L INT	SL 729
LANCASTR (1962)	2411.788	CS MON 15IN DN @ C/L INT 30TH ST W + AVE K-8 MKD (1/4 SEC COR 30-29 T7N R12W) USE N EDGE	SL 730
LANCASTR (1962)	2414.637	RD MON IN WELL 8IN DN ON SE COR 30TH ST W + AVE K-8 100FT S + 50FT E C/L INT	SL 731
LANCASTR (1962)	2360.448	RDBM TAG IN CONC STEP OF HSE NO 6607 AVE I 75FT N + 125FT W C/L INT 66TH ST W	SL 818
LANCASTR (1962)	2360.913	CS MON FLUSH ON NE COR AVE I + 66TH ST W 228FT W + 25FT N C/L INT MKD (BM H 747)	SL 819
LANCASTR (1962)	2365.493	CS MON FLUSH ON NW COR AVE I + 70TH ST W 30FT N + 22FT W C/L INT MKD (CSBM 102-15)	SL 820
LANCASTR (1962)	2366.067	L+T CONC SLAB OF BLDG ON SW COR AVE I + 70TH ST W 114FT W + 70FT S C/L INT MKD (BM)	SL 821
LANCASTR (1962)	2374.995	L+T W END GAS ISL ON SE COR AVE I + 75TH ST W 115FT E + 90FT S C/L INT MKD (BM)	SL 822

QUAD-YEAR	ELEV	DESCRIPTION (INCLUDE QUAD AND YEAR IN DESCRIPTION)	BM NUMBER
LANCASTR (1962)	2376.903	USC+GS MON FLUSH NE COR AVE I + 75TH ST W 61FT N + 16FT E C/L INT MKD (B 306 1935)	SL 823
LANCASTR (1962)	2391.141	L+T CONC STANDPIPE SE COR AVE I + 80TH ST W 60FT S + 60FT E C/L INT MKD (BM)	SL 824
LANCASTR (1962)	2389.763	CS MON FLUSH NE COR AVE I + 80TH ST W 48FT N + 25FT W C/L INT MKD (BM 102-17 1957)	SL 825
LANCASTR (1962)	2404.233	RDBM TAG IN NE COR CONC WEIR BOX SE COR AVE I + PROP 85TH ST W 32FT S + 25FT E C/L INT	SL 826
LANCASTR (1962)	2400.338	CS MON FLUSH 28FT N C/L AVE I + 7FT E C/L PROP 85TH ST W MKD (BM 102-18)	SL 827
LANCASTR (1962)	2420.690	L+T CONC WK HSE SE COR AVE I + 90TH ST W 83FT S + 60FT E C/L INT MKD (BM)	SL 828
LANCASTR (1962)	2422.263	CS MON NW COR AVE I + 90TH ST W 31FT N + 70FT W C/L INT MKD (BM 102-19 1957)	SL 829
LANCASTR (1962)	2418.107	RDBM MON IN WELL 8IN DN SE COR 90TH ST W + PROP AVE H-8 75FT S + 25FT E C/L INT 2IN IP MARKER 2FT E 3FT UP	SL 830
LANCASTR (1962)	2423.335	BEG @ C/L INT AVE I + 90TH ST W THENCE 0.5 MI NLY ALONG 90TH ST W TO A SMALL PUMP HSE 180FT E C/L TO L+T IN 24IN CONC STANDPIPE OF PUMP HOUSE MKD (BM)	SL 831
LANCASTR (1962)	2430.710	RDBM TAG N CB PARKING AREA NW COR 90TH ST W + AVE H 155FT W + 44FT N C/L INT	SL 832
LANCASTR (1962)	2431.097	RDBM TAG W CB PARKING AREA NW COR 90TH ST W + AVE H 250FT N + 50FT W C/L INT	SL 833
LANCASTR (1962)	2428.916	RDBM TAG CONC BASE OF 3IN IP BREATHER SE COR 90TH ST W + PROP AVE G-8 50FT S + 40FT E C/L INT	SL 834
LANCASTR (1962)	2430.152	RDBM MON IN WELL 8IN DN ON NW COR 90TH ST W + PROP ANV G-8 210FT N + 23FT W C/L 6FT S PP NO K5409Y 2IN IP MARKER 2FT W 3FT UP	SL 835
LANCASTR (1962)	2424.897	CS MON 14IN DN @ C/L INT 90TH ST W + AVE G MKD (31-32-5-6 T8N R13W)	SL 836
LANCASTR (1962)	2425.553	L+T IN CONC APRON OF GARAGE NE COR 90TH ST W + AVE G 180FT N + 129FT E C/L INT MKD (BM)	SL 837
LANCASTR (1962)	2416.647	L+T IN CONC WK CF HSE SW COR 90TH ST W + AVE F 380FT S + 85FT W C/L INT MKD (BM)	SL 838
LANCASTR (1962)	2416.751	CS MON 18IN DN @ C/L INT 90TH ST W + AVE F MKD (T8N R13W 29-30-31-32)	SL 839
LANCASTR (1962)	2422.639	CS MON 14IN DN @ C/L INT 90TH ST W + AVE E-8 MKD (T8N R13W 29-30)	SL 840
LANCASTR (1962)	2424.333	L+T IN CONC PORCH STORE BLDG NW COR 90TH ST W + AVE E-8 100FT N + 80FT W C/L INT MKD (BM)	SL 841
LANCASTR (1962)	2432.722	8IN WELL CASING WITH 2 NOTCHES ON E RIM SW COR 90TH ST W + AVE E 69FT S + 20FT W C/L INT	SL 842
LANCASTR (1962)	2433.436	L+T CONC PORCH HSE SW COR 90TH ST W + AVE E 68FT S + 92FT W C/L INT MKD (BM)	SL 843
LANCASTR (1962)	2435.966	RDBM MON IN WELL 8IN DN SE COR 90TH ST W + AVE D-8 275FT S + 25FT E C/L INT 2IN IP MARKER 2FT E 3FT UP	SL 844

QUAD-YEAR	ELEV	DESCRIPTION (INCLUDE QUAD AND YEAR IN DESCRIPTION)	BM NUMBER
LANCASTR (1962)	2437.468	CS MON 18IN DN @ C/L INT 90TH ST W + AVE D MKD (T8N R13W 17-18-19-20)	SL 846
LANCASTR (1962)	2440.828	RDBM TAG IN CONC FTG OF 10IN BREATHER NE COR PUMP HSE SE COR 90TH ST W + AVE D 150FT E + 56FT S C/L INT	SL 847
LANCASTR (1962)	2443.619	CS MON 12IN DN @ C/L INT 90TH ST W + AVE C-8 MKD (T8N R13W 17-18)	SL 848
LANCASTR (1962)	2443.234	RDBM MON IN WELL 8IN DN NE COR 90TH ST W + AVE C-8 217FT N + 25FT E C/L INT 2IN IP MARKER 2FT E 3FT UP	SL 849
LANCASTR (1962)	2443.027	CS MON 14IN DN @ C/L INT 90TH ST W + AVE C MKD (T8N R13W 7-8-17-18)	SL 850
LANCASTR (1962)	2444.522	L+T IN CONC WK CF HSE NE COR 90TH ST W + AVE C 195FT N + 85FT E C/L INT MKD (BM)	SL 851
LANCASTR (1962)	2440.293	CS MON 12IN DN @ C/L INT 90TH ST W + PROP AVE B-8 MKD (T8N R13W 7-8)	SL 852
LANCASTR (1962)	2445.148	RDBM TAG CONC STANDPIPE 30IN UP NW COR 90TH ST W + PROP AVE B-8 30FT N + 55FT W C/L INT	SL 853
LANCASTR (1962)	2440.496	USGS MON FLUSH NW COR 90TH ST W + AVE B 28FT N + 36FT W C/L INT MKD (R 28 1929)	SL 854
LANCASTR (1962)	2438.468	CS MON 8IN DN @ C/L INT 90TH ST W + AVE B MKD (T8N R13W 5-6-7-8)	SL 855
LANCASTR (1962)	2427.799	CS 2IN IP + SPK @ C/L INT AVE B + 85TH ST W 15IN DN	SL 856
LANCASTR (1962)	2428.905	RDBM MON IN WELL 8IN DN SE COR AVE B + 85TH ST W 167FT E + 35FT S C/L INT 2IN IP MARKER 2FT S 3FT UP	SL 857
LANCASTR (1962)	2417.478	CS MON 14IN DN @ C/L INT AVE B + SPRING VALLEY RD 80TH ST W MKD (T8N R13W 4-5-8-9)	SL 858
LANCASTR (1962)	2417.765	RDBM MON IN WELL 8IN DN NE COR AVE B + SPRING VALLEY RD 80TH ST W 30FT N + 72FT E C/L INT 2IN IP MARKER 2FT N 3FT UP	SL 859
LANCASTR (1962)	2408.872	2IN IP WITH RE TAG NO 7858 14IN DN @ C/L INT AVE B + PROP 75TH ST W	SL 860
LANCASTR (1962)	2408.930	RDBM MON IN WELL 8IN DN NE COR AVE B + PROP 75TH ST W 28FT N + 42FT E C/L INT 2IN IP MARKER 2FT N 3FT UP	SL 861
LANCASTR (1962)	2396.846	CS MON 14IN DN @ C/L INT AVE B + 70TH ST W MKD (T8N R13W 3-4-9-10)	SL 862
LANCASTR (1962)	2398.143	RDBM MON IN WELL 8IN DN NE COR AVE B + 70TH ST W 25FT N + 65FT E C/L INT 2IN IP MARKER 2FT N 3FT UP	SL 863
LANCASTR (1962)	2387.545	2IN IP WITH CUT SPK 18IN DN @ C/L INT AVE B + 65TH ST W	SL 864
LANCASTR (1962)	2389.539	RDBM MON IN WELL 8IN DN NE COR AVE B + 65TH ST W 33FT N + 96FT E C/L INT 2IN IP MARKER 2FT N 3FT UP	SL 865
LANCASTR (1962)	2381.372	CS MON 14IN DN @ C/L INT AVE B + 60TH ST W MKD (T8N R13W 2-3-10-11)	SL 866

QUAD-YEAR	ELEV	DESCRIPTION (INCLUDE QUAD AND YEAR IN DESCRIPTION)	BM NUMBER
LANCASTR (1962)	2381.946	BR CAP MON FLUSH SE COR AVE B + 60TH ST W 27FT S + 32FT E C/L INT MKD (R 27 1929)	SL 867
LANCASTR (1962)	2383.619	CS MON 8IN DN @ C/L INT 60TH ST W + PROP AVE B-8 MKD (T8N R13W 10-11)	SL 868
LANCASTR (1962)	2383.580	L+T IN CONC APRON GARAGE SE COR 6/TH ST W + PROP AVE B-8 15FT S + 118FT E C/L INT MKD (BM)	SL 869
LANCASTR (1962)	2382.949	CS MON 10IN DN @ C/L INT 60TH ST W + PROP AVE C MKD (T8N R13W 10-11-14-15)	SL 870
LANCASTR (1962)	2382.319	RDBM MON IN WELL 8IN DN SE COR 60TH ST W + PROP AVE C 160FT S + 22FT E C/L INT 2IN IP MARKER 2FT E 3FT UP	SL 871
LANCASTR (1962)	2382.885	RD MON IN WELL 8IN DN NE COR 60TH ST W + AVE C-8 5FT N + 90FT E C/L INT 2IN IP MARKER 2FT N 3FT UP	SL 873
LANCASTR (1962)	2384.583	USC+GS BR CAP IN CONC HDWL @ NE COR AVE D + 60TH ST W 30FT N + 30FT E C/L INT MKD (B1154 1961)	SL 874A
LANCASTR (1962)	2385.102	ST HWY BR CAP IN CONC IN HDWL NW COR 60TH ST W + AVE D 40FT N + 24FT W C/L INT MKD (CALIF DIV HWYS)	SL 875
LANCASTR (1962)	2376.203	1-1/2IN IP WITH CUT SPK 14IN DN @ C/L INT 60TH ST W + AVE D-8	SL 876
LANCASTR (1962)	2375.926	L+T IN CONC SLAB OF HSE SE COR 60TH ST W + AVE D-8 120FT E + 70FT S C/L INT	SL 877
LANCASTR (1962)	2360.130	CS MON 6IN DN @ C/L INT 60TH ST W + PROP AVE E MKD (T8N R13W 22-23-26-27)	SL 878
LANCASTR (1962)	2358.629	RD MON IN WELL 8IN DN SW COR 60TH ST W + PROP AVE E 115FT S + 30FT W C/L INT 2IN IP MARKER 2FT W 3FT UP	SL 879
LANCASTR (1962)	2356.206	1-1/2IN IP 14IN DN @ C/L INT 60TH ST W + PROP AVE E-8 USE E EDGE	SL 880
LANCASTR (1962)	2355.676	L+T IN CONC PORCH CHURCH BLDG SE COR 60TH ST W + PROP AVE E-8 107FT E + 628FT S C/L INT	SL 881
LANCASTR (1962)	2353.314	L+T 2IN DN @ C/L INT 60TH ST W + AVE F	SL 882
LANCASTR (1962)	2353.887	CS MON 2IN UP SE COR 60TH ST W + AVE F 31FT S + 75FT E C/L INT MKD (BM 103-11)	SL 883
LANCASTR (1962)	2352.434	L+T IN CONC CROSS GUTTER @ C/L INT 60TH ST W + PROP AVE F-8	SL 884
LANCASTR (1962)	2353.021	RDBM TAG IN CONC FTG 5FT CHAIN LINK FEN AROUND AIRPORT SE COR 60TH ST W + PROP AVE F-8 60FT S + 50FT E C/L INT	SL 885
LANCASTR (1962)	2352.795	RDBMS TAG SE COR FEN FTG OF AIRPORT NE COR 60TH ST W + AVE G 50FT N + 50FT E C/L INT	SL 886
LANCASTR (1962)	2354.134	CS MON IN WELL 18IN DN @ C/L INT 60TH ST W + AVE G MKD (T7N T8N R13W 2-3-34-35)	SL 887
LANCASTR (1962)	2357.896	CS MON IN WELL 17IN DN @ C/L INT 60TH ST W + PROP AVE G-8 MKD (T7N R13W 2-3)	SL 888

QUAD-YEAR	ELEV	DESCRIPTION (INCLUDE QUAD AND YEAR IN DESCRIPTION)	BM NUMBER
LANCASTR (1962)	2358.742	RD MON IN WELL 8IN DN SW COR 60TH ST W + PROP AVE G-8 180FT S + 31FT W C/L INT 2IN IP MARKER 2FT W 3FT UP	SL 889
LANCASTR (1962)	2357.164	CS MON 4IN UP NE COR 60TH ST W + AVE H 39FT N + 37FT E C/L INT MKD (BM 103-15 1957)	SL 890
LANCASTR (1962)	2357.232	RDBM MON IN WELL 8IN DN ON SE COR 60TH ST W + AVE H 20FT S + 56FT E C/L INT 2IN IP MARKER 2FT S 3FT UP	SL 891
LANCASTR (1962)	2352.738	L+T IN CONC PORCH HSE NE COR 60TH ST W + PROP AVE H-8 225FT N + 150FT E C/L INT MKD (BM)	SL 892
LANCASTR (1962)	2352.551	CS MON 3IN UP SE COR 60TH ST W + PROP AVE H-8 42FT S + 42FT E C/L INT MKD (BM 103-16 1957)	SL 893
LANCASTR (1962)	2389.935	CS MON 8IN DN @ C/L INT AVE D + PROP 65TH ST W MKD (T8N R13W 22-15)	SL 894
LANCASTR (1962)	2391.117	RDBM MON IN WELL 8IN DN NW COR AVE D + PROP 65TH ST W 30FT N + 180FT W C/L INT 2IN IP MARKER 2FT N 3FT UP	SL 895
LANCASTR (1962)	2397.898	CS MON 18IN DN @ C/L INT AVE D + 70TH ST W MKD (T8N R13W 15-16-21-22)	SL 896
LANCASTR (1962)	2402.284	CHIS X ON 3IN IP @ 90 DEGREE TURN ON NW COR AVE D + 70TH ST W 60FT N + 205FT W C/L INT	SL 897
LANCASTR (1962)	2411.641	RDBM TAG IN 12IN CONC STANDPIPE NE COR AVE D + 75TH ST W 55FT N + 40FT E C/L INT	SL 898
LANCASTR (1962)	2408.167	CS MON 16IN DN @ C/L INT AVE D + 75TH ST W MKD (T8N R13W 16-21)	SL 899
LANCASTR (1962)	2416.428	CS MON 24IN DN @ C/L INT AVE D + 80TH ST W MKD (T8N R13W 16-17-20-21)	SL 900
LANCASTR (1962)	2418.661	RDBM TAG IN NW CONC FIG OF HAY BARN ON SE COR AVE D + 80TH ST W 32FT S + 50FT E C/L INT	SL 901
LANCASTR (1962)	2426.959	RDBM MON IN WELL 8IN DN NE COR AVE D + 85TH ST W 105FT E + 28FT N C/L INT 2IN IP MARKER 2FT N 3FT UP	SL 902
LANCASTR (1962)	2426.574	CS MON 14IN DN @ C/L INT AVE D + 85TH ST W MKD (T8N R13W 17-20)	SL 903
BASELINE (1955)	2566.905	CS BRASS CAP BM 5IN UP TOP OF 12IN CONC POST AVE M 0.5 MI W 60TH ST W 31.5FT S OF C/L 1FT N OF WHITE WITNESS POST MKD (BM 104-16 1958 RE 5869)	SL 904
BASELINE (1955)	2609.886	CS BR CAP BM 5IN UP TOP OF 12IN CONC POST @ AVE M + 70TH ST W 75.5 FT N + 44 FT W C/L INT 3.5FT N PP NO 1183862E MKD (BM 104-17 1958 RE 5869)	SL 905
LANCASTR (1962)	2515.337	CS BR CAP BM 5IN UP TOP OF 12IN CONC POST 70TH ST W 0.5 MI N OF AVE M 46.5FT W OF C/L + 3.5FT W PP NO 1183877E MKD (BM 104-18 1958 RE 5869)	SL 906
LANCASTR (1962)	2444.817	CS BR CAP BM 4IN UP TOP OF 12IN CONC POST @ INT AVE L + 70TH ST W 78FT S + 28FT W C/L INT 5FT N OF PP NO 1183892E MKD (BM 104-19 1958 RE 5869)	SL 907
LANCASTR (1962)	2378.461	CS BR CAP BM 5IN UP TOP OF 12IN CONC POST @ INT AVE K + 70TH ST W 32FT N + 32FT W C/L INT + 8.5FT N PP NO 271367E MKD (BM 104-21 1958 RE 5869)	SL 909

QUAD-YEAR	ELEV	DESCRIPTION (INCLUDE QUAD AND YEAR IN DESCRIPTION)	BM NUMBER
LANCASTR (1962)	2362.883	CS BR CAP BM 5IN UP TOP OF 12IN CONC POST 70TH ST W 0.5 MI N OF AVE K 240FT N OF FENCE COR TO THE W 30FT W OF APPROX C/L 70TH ST W DIRT RD 6.5FT W OF PP NO 538524E + 5FT E OF NS FENCE MKD (BM 104-22 1958 RE 5869)	SL 910
LANCASTR (1962)	2358.584	CS BR CAP BM 5IN UP TOP OF 12IN CONC POST @ INT AVE J + 70TH ST W 30.5FT W + 55FT S C/L INT + 23.5FT S OF PP NO 800845E MKD (BM 104-23 1958 RE 5869)	SL 911
LANCASTR (1962)	2360.237	CS BR CAP BM 5IN UP TOP OF 12IN CONC POST 70TH ST W .55MI N OF AVE J 24.5FT N OF APPROX C/L OF PRIVATE ST TO W 26FT W OF C/L 70TH ST W + 5.5FT W OF PP NO 1190759E MKD (BM 104-24 1958 RE 5869)	SL 912
BASELINE (1955)	2606.244	USGS MON IN TOP OF 6IN CONC POST FLUSH 26FT E CTR 180TH ST E (DIRT RD) 32FT S CTR AVE M (DIRT RD) 60FT SE WHITE CONC SIGN POST MKD (USGS IN COOPERATION W/LA CO LS 18 1929 RE 1941)	SL 1064
BASELINE (1955)	2593.866	CSBM IN TOP OF 12IN CONC POST 6IN UP 24FT N CTR AVE M (DIRT RD) 0.5 MI W 180TH ST E + 39FT SW 2IN IP + CONC PLUG WITH T+N MKD (LA CO ENG) 12IN UP MKD (BM 106-89 1959 RE 58 69)	SL 1065
BASELINE (1955)	2584.374	CSBM TOP OF 12IN CONC POST 6IN UP 124FT S CTR AVE M (DIRT RD) 23FT W CTR 170TH ST E 19FT S PP NO 423982E MKD (BM 106-90 1959 RE 58 69)	SL 1066
LANCASTR (1962)	2581.089	CSBM IN WELL 10IN DN CTR 170TH ST E @ DIRT RD TO LINDA MIA RANCH HSE NO 42200 47FT NE PP NO 423645E MKD (CO ENG MON 1/4 COR SEC 33,34 T7N R9W RE 58 69)	SL 1067
LANCASTR (1962)	2578.298	CSBM IN WELL 10IN DN ON C/L 170TH ST E + AVE L (DIRT RD) 64FT SE PP NO 423633E MKD (CO ENG RE 58 69 SEC COR 28,27,33,34 T7N R9W)	SL 1068
LANCASTR (1962)	2561.690	USGS MON IN TOP OF 6IN CONC POST 6IN UP 27FT S CTR AVE K-8 250FT W CTR 170TH ST E + 7FT SW PP NO 423619E MKD (USGS IN COOPERATION WITH LA CO LS 17 1929)	SL 1069
LANCASTR (1962)	2551.579	CSBM TOP OF 12IN CONC POST 6IN UP 19FT S CTR AVE K-8 0.5 MI W 170TH ST E PP NO 430649E MKD (BM 106-94 1959 RE 58 69)	SL 1070
LANCASTR (1962)	2538.667	CSBM TOP OF 12IN CONC POST 6IN UP 18FT W C/L PROD SLY 160TH ST E 550FT N CTR AVE K-8 3FT S PP NO 423723E MKD (BM 106-95 1959 RE 58 69)	SL 1071
LANCASTR (1962)	2533.930	CSBM TOP OF 12IN CONC POST 6IN UP 23FT N C/L AVE K 205FT W C/L 160TH ST E 5FT N PP NO 423712E MKD (BM 106-96 1959 RE 58 69)	SL 1072
LANCASTR (1962)	2525.872	CSBM TOP OF 12IN CONC POST 6IN UP 23FT N CTR PVMT AVE K 0.5 MI W 160TH ST E + 5FT N PP NO K7746Y 74FT SE WATER WELL SHAFT MKD (BM 106-97 1959 RE 58 69)	SL 1073
LANCASTR (1962)	2516.563	CSBM TOP OF 12IN CONC POST 6IN UP 17FT E CTR 150TH ST E 83FT N AVE K (DIRT RD) 10FT S PP NO 274145E MKD (BM 106-98 1959 RE 58 69)	SL 1074
LANCASTR (1962)	2444.557	CSBM MON MKD (BM 107-24 1961 RE 58 69) IN CONC SQ 4IN UP 4FT N SW PROP COR EDISON PIUTE SUBSTA 45FT N C/L AVE J + 40FT E C/L 90TH ST E	SL 1075

QUAD-YEAR	ELEV	DESCRIPTION (INCLUDE QUAD AND YEAR IN DESCRIPTION)	BM NUMBER
LANCASTR (1962)	2462.931	RD BR CAP MON IN WELL W/COVER 5FT E PP NO K8333Y 30FT N C/L AVE J + 195FT W C/L 105TH ST E (PROP) 2IN IP WITNESS 3FT UP 2FT N	SL 1076
LANCASTR (1962)	2459.815	RD BR CAP MON IN WELL W/COVER 5FT W PP NO K8335Y 30FT N C/L AVE J + 200FT E C/L E 105TH ST (PROP) 2IN IP WITNESS 3FT UP 2FT N	SL 1077
LANCASTR (1962)	2453.918	CS MON MKD (T7N R10W 15,16,21,22) 15IN DN @ @ C/L INT AVE J + 110TH ST E	SL 1078
LANCASTR (1962)	2455.013	RD MON IN WELL W/COVER 72FT N C/L AVE J + 30FT E C/L 110TH ST E 2IN IP WITNESS 3FT UP 2FT S	SL 1079
LANCASTR (1962)	2460.571	RD MON IN WELL W/COVER 4FT E PP NO 918158E 30FT N C/L AVE J + 105FT W C/L 115TH ST E (PROP) 2IN IP WITNESS 3FT UP 2FT N	SL 1080
LANCASTR (1962)	2458.897	RD MON IN WELL W/COVER 4FT W PP NO 918590E 30FT N C/L AVE J + 190FT E C/L 115TH ST (PROP) 2IN IP WITNESS 3FT UP 2FT N	SL 1081
LANCASTR (1962)	2459.777	RD MON IN WELL 13FT E PP NO 918598E 30FT N C/L AVE J + 66FT W C/L 120TH ST E (PROP) 2IN IP WITNESS 3FT UP 2FT N	SL 1082
LANCASTR (1962)	2457.989	RD MON IN WELL W/COVER 5FT W PP NO 1048308E 30FT N C/L AVE J + 195FT E C/L 120TH ST E (PROP) 2IN IP WITNESS 3FT UP 2FT N	SL 1083
LANCASTR (1962)	2462.386	RD MON IN WELL W/COVER 7FT E PP NO 1014830E 30FT N AVE J + 180FT W C/L 125TH ST E 2IN IP WITNESS 3FT UP 2FT N	SL 1084
LANCASTR (1962)	2463.216	RD MON IN WELL W/COVER 7FT W PP NO 1014867E 30FT N AVE J + 145FT E C/L 125TH ST E 2IN IP WITNESS 3FT UP 2FT N	SL 1085
LANCASTR (1962)	2465.730	RD MON IN WELL W/COVER 5FT W PP NO 409086E 20FT N C/L AVE J + 210FT W C/L 130TH ST E 2IN IP WITNESS 3FT UP 2FT N	SL 1086
LANCASTR (1962)	2465.748	CS MON IN WELL W/COVER MKD (T7N R10W 13,14,23,24 @ C/L INT OF AVE J + 130TH ST (DIRT RD)	SL 1087
LANCASTR (1962)	2473.504	CS MON IN WELL W/COVER MKD (1/4 COR T7N R10W 13, 24) @ C/L INT AVE J + 135TH ST E (DIRT RD)	SL 1088
LANCASTR (1962)	2477.161	RD MON IN WELL W/COVER 5FT NE PP NO 1014874E 35FT N C/L AVE J + 360FT E 135TH ST E 2IN IP WITNESS 3FT UP 2FT N	SL 1089
LANCASTR (1962)	2484.241	CS MON IN WELL W/COVER MKD (T7N R10W R9W 13, 24 18,19) @ C/L INT AVE J + 140TH ST E	SL 1090
LANCASTR (1962)	2487.201	CO ENG BM BR CAP MON MKD (BM 106-102 1959 RE 58 69) IN CONC 6IN UP 35FT W C/L 140TH ST E + 90FT N C/L AVE J	SL 1091
LANCASTR (1962)	2488.574	CSBM IN TOP OF 12IN CONC POST 6IN UP 39FT S CTR AVE J 0.5 MI W 150TH ST E 57FT S PP NO 390449E MKD (BM 106-101 1959 RE 58 69)	SL 1092
LANCASTR (1962)	2490.639	CSBM TOP OF 12IN CONC POST 6IN UP 18FT E CTR 150TH ST E 39FT S CTR AVE J 55FT S PP NO 778312E + 3FT W OF 4FT BARBED WIRE FENCE RUNNING S MKD (BM 106-100 1959 RE 58 69)	SL 1093

QUAD-YEAR	ELEV	DESCRIPTION (INCLUDE QUAD AND YEAR IN DESCRIPTION)	BM NUMBER
LANCASTR (1962)	2503.740	CSBM TOP OF 12IN CONC POST 6IN UP 19FT E CTR 150TH ST E @ DIRT RD 0.5 MI N AVE K 4FT E PP NO 951510E MKD (BM 106-99 1959 RE 58 69)	SL 1094
LANCASTR (1962)	2516.272	L+T SE COR OF 3FT SQ CONC SLAB 52FT W C/L 150TH ST E + 140FT N C/L AVE K	SL 1095
LANCASTR (1962)	2529.480	RDBM MON IN WELL W/COVER 35FT E C/L 150TH ST E + 100FT N C/L AVE K-8 (UNIMPROVED) 2IN IP WITNESS 3FT UP 2FT E	SL 1096
LANCASTR (1962)	2530.817	RDBM MON IN WELL W/COVER 35FT E C/L 150TH ST E + 100FT S C/L AVE K-8 (UNIMPROVED) 2IN IP WITNESS 3FT UP 2FT E	SL 1097
LANCASTR (1962)	2548.090	RDBM MON IN WELL W/COVER 35FT E C/L 150TH ST E + 100FT N C/L AVE L (UNIMPROVED) 2IN IP WITNESS 3FT UP 2FT E	SL 1098
LANCASTR (1962)	2547.169	CS MON IN WELL W/COVER MKD (T7N R9W 29,30,31,32) @ C/L INT 150TH ST E + AVE L	SL 1099
LANCASTR (1962)	2560.308	RDBM MON IN WELL W/COVER 35FT E C/L 150TH ST E + 110FT N C/L AVE L-8 (UNIMPROVED) 2IN IP WITNESS 3FT UP 2FT E	SL 1100
LANCASTR (1962)	2560.717	CS MON IN WELL W/COVER MKD (T7N R9W 31,32 1/4 COR) @ C/L INT 150TH ST E + AVE L-8 (UNIMPROVED)	SL 1101
BASELINE (1955)	2575.387	CS MON IN WELL W/COVER MKD (T7N T6N R9W 31,32, 5,6) @ C/L INT 150TH ST + AVE M (IMPROVED TO E)	SL 1102
BASELINE (1955)	2576.070	RDBM MON IN WELL W/COVER 5FT NE PP NO 28FT E C/L 150TH ST E + 193FT S C/L AVE M (IMPROVED TO E) 2IN IP WITNESS 3FT UP 2FT N	SL 1103
LANCASTR (1962)	2469.615	CSBM IN WELL 12IN DN @ C/L 140TH ST E 0.5MI N AVE J 108FT E PP NO 1014890E MKD (CS RE2177 1/4 COR 13,18 R10W R9W T7N)	SL 1141
LANCASTR (1962)	2468.833	CSBM TOP OF 12IN CONC POST 6IN UP 32FT W CTR OF 140TH ST E 0.65 MI N AVE J 4FT S PP NO 101482E MKD (BM 106-103 1959 RE 58 69)	SL 1142
LANCASTR (1962)	2458.959	CSBM IN WELL 21IN DN @ CTR INT 140TH ST E + AVE I (DIRT RD) 1 MI S AVE H MKD (CS MCN RE2177 SEC COR 12,13,7,18 R10W R9W T7N)	SL 1143
LANCASTR (1962)	2449.257	CSBM IN WELL 9IN DN @ C/L 140TH ST E 0.5 MI S AVE H 225FT S ELY PROD S SIDE HSE NO 45615 MKD (CS RE 2177 1/4 COR SEC 12, 7 R10W R9W T7N)	SL 1144
LANCASTR (1962)	2441.706	CSBM TOP OF 12IN CONC POST 33FT W C/L 140TH ST E 68FT N C/L AVE H 4FT W PP NO 767471E + 75FT NW SL 1146 MKD (BM 106-106 1959 RE 58 69)	SL 1145
LANCASTR (1962)	2440.227	CSBM IN WELL 20IN DN @ CTR INT 140TH ST E + AVE H 75FT SE PP NO 767471E + 75FT SE SL 1145 MKD (CS MON SEC COR 1,6,12,7 R10W R9W T7N)	SL 1146
LANCASTR (1962)	2448.893	CSBM IN WELL 21IN DN ON C/L 140TH ST E 10FT S C/L AVE G-8 65FT SE PP NO 767477E + 80FT SW PP NO 878100E MKD (CS RE 2177 1/4 COR 1,6 R10W R9W T7N)	SL 1147
LANCASTR (1962)	2451.133	CSBM TOP OF 12IN CONC POST 60FT W C/L 140TH ST E 32FT N C/L AVE G PROD WLY 28FT W PP NO 767485E + 67FT NW SL 1149 MKD (BM 106-108 1959 RE 58 69)	SL 1148

QUAD-YEAR	ELEV	DESCRIPTION (INCLUDE QUAD AND YEAR IN DESCRIPTION)	BM NUMBER
LANCASTR (1962)	2450.385	CSBM IN WELL 24IN DN @ C/L INT 140TH ST E + AVE G 45FT SE PP NO 767485E 93FT NE PP NO 1219524E + 67FT SE SL 1148 MKD (CS MON RS 1929 SEC COR 36,31,1,6 T7N R10W R9W)	SL 1149
LANCASTR (1962)	2454.924	CSBM IN WELL 8IN DN C/L 140TH ST E 19FT N C/L AVE F-8 MKD (CS MON 1/4 SEC COR 36,31 R10W R9W T8N)	SL 1150
LANCASTR (1962)	2460.286	CSBM TOP OF 12IN CONC POST 49FT E 31FT N C/L 140TH ST E + AVE F (DIRT RD) 111FT N 2IN IP W/CONC PLUG + 6IN UP 78FT NE SL 1152 MKD (BM 106-110 1959 RE 58 69)	SL 1151
LANCASTR (1962)	2457.827	CSBM IN WELL 10IN DN C/L 140TH ST E + AVE F (DIRT RD) 71FT NW 2IN IP W/CONC PLUG 6IN UP 78FT SW SL 1151 MKD (CS MON SEC COR 25,30,31, 36 R10W R9W T8N)	SL 1152
LANCASTR (1962)	2458.279	CSBM IN WELL 18IN DN @ C/L INT 140TH ST E + AVE E-8 71FT SW 2IN IP W/CONC PLUG + 6IN UP 71FT NE 2IN IP W/CONC PLUG + 6IN UP MKD (CS MON 1/4 COR SEC 25,30 R10W R9W T8N)	SL 1153
LANCASTR (1962)	2423.978	CSBM IN TOP OF 12IN CONC POST 6IN UP 48FT W C/L 140TH ST E + 31FT N C/L AVE E 52FT NW SL 1155 MKD (BM 106-112 1959 RE 58 69)	SL 1154
LANCASTR (1962)	2423.911	CSBM IN WELL 6IN DN @ C/L INT 140TH ST E + AVE E 52FT SE SL 1154 MKD (CS MON SEC COR 19,24,25,30 R10W R9W T8N)	SL 1155
LANCASTR (1962)	2371.711	CSBM IN TOP OF 12IN CONC POST 6IN UP 32FT S C/L AVE E 13FT W C/L 135TH ST E 0.5 MI W 140TH ST E 14FT S PP NO 759331E + 52FT NW PP NO 991927E MKD (BM 106-113 1959 RE 58 69)	SL 1156
LANCASTR (1962)	2367.484	CSBM IN TOP OF 12IN CONC POST 6IN UP 20FT S C/L AVE E + 130TH ST E 1 MI W 140TH ST E 44FT W SLY C/L PROD OF DIRT RD TO N + 33FT W PP NO 759325 MKD (BM 106-114 1959 RE 58 69)	SL 1157
LANCASTR (1962)	2363.651	CSBM IN WELL 14IN DN AVE E 0.5 MI E 120TH ST E 22FT N PP NO 441562E MKD (CS SEC COR 23,26 R10W T8N)	SL 1158
LANCASTR (1962)	2357.900	CSBM IN TOP OF 12IN CONC POST 6IN UP 23FT N C/L AVE E 196FT W C/L 120TH ST E 3FT E PP NO 390066E MKD (BM 106-116 1959 RE 59 69)	SL 1159
LANCASTR (1962)	2362.095	CSBM IN TOP OF 12IN CONC POST 6IN UP 28FT N C/L AVE E 0.5 MI W 120TH ST E 51FT E OF CTR DIRT RD TO HSE NO 11337 4FT N PP NO 390054E MKD (BM 106-117 1959 RE 58 69)	SL 1160
LANCASTR (1962)	2356.902	CSBM IN TOP OF 12IN CONC POST 6IN UP 24FT N C/L AVE E 48FT E C/L 110TH ST E 1 MI W 120TH ST E + 3FT N PP NO 381243E MKD (BM 106-118 1959 RE 58 69)	SL 1161
LANCASTR (1962)	2353.597	CSBM TOP OF 12IN CONC POST 6IN UP 25FT S C/L AVE E + 105TH ST E 38FT E C/L DIRT RD TO S + 3FT S PP NO 381231E MKD (BM 106-119 1959 RE 58 69)	SL 1162
LANCASTR (1962)	2350.241	CSBM TOP 12IN CONC POST 6IN UP 48FT N C/L AVE E 22FT E CTR 100TH ST E + 14FT S TP NO K-2318Y + 52FT NE CONC SIGN POST MKD (BM 106-120 1959 RE 58 69)	SL 1163

QUAD-YEAR	ELEV	DESCRIPTION (INCLUDE QUAD AND YEAR IN DESCRIPTION)	BM NUMBER
LANCASTR (1962)	2344.752	CSBM IN TOP 12IN CONC POST 6IN UP 21FT S CTR AVE E 270FT W CTR 95TH ST E 0.45 MI E 90TH ST E + 3FT E PP NO 381206E MKD (BM 106-121 1959 RE 58 60)	SL 1164
LANCASTR (1962)	2343.535	CSBM IN TOP 12IN CONC POST 6IN UP 32FT E CTR 90TH ST E 46FT S CTR AVE E + 7FT SE PP NO 538296E MKD (BM 106-122 1959 RE 58 69)	SL 1165
LANCASTR (1962)	2349.056	1-1/2IN IP CONC PLUG + NAIL 8IN DN @ C/L INT 90TH ST E + AVE E-8 (DIRT RD)	SL 1166
LANCASTR (1962)	2349.269	RDBM IN CONC FTG OF 4X4IN SUPPORT @ NW COR HAY SHED 50FT E C/L 90TH ST E + 50FT S C/L AVE E-8	SL 1167
LANCASTR (1962)	2358.133	CSBM MON MKD (BM NO 116-6 1961 RE 58 69) IN CONC SQ 2IN UP 30FT N C/L AVE F (DIRT RD) + 77FT E C/L 90TH ST E	SL 1168
LANCASTR (1962)	2367.858	CSBM MON MKD (BM NO 116-5 1961 RE 58 69) IN CONC SQ 2IN UP 80FT N C/L AVE F-8 (DIRT RD) + 30FT E C/L 90TH ST E	SL 1169
LANCASTR (1962)	2377.332	CSBM MON MKD (BM 116-4 1961 RE 58 69) IN CONC SQ 2IN UP 27FT W C/L 90TH ST E + 70FT S C/L AVE G (DIRT RD)	SL 1170
LANCASTR (1962)	2387.034	CSBM MON MKD (BM 116-3 1961 RE 58 69) IN CONC SQ 4IN UP 25FT W PP NO 951530E 80FT E 90TH ST E + 20FT S AVE G-8	SL 1171
LANCASTR (1962)	2398.085	CSBM MON IN CONC SQ 4IN UP 35FT N + 115FT E C/L INT AVE H + 90TH ST E MKD (BM 116-2 1961 RE 58 69)	SL 1172
LANCASTR (1962)	2405.313	CSBM MON MKD (BM 116-1 1961 RE 58 69) IN CONC SQ 3IN UP 30FT E C/L 90TH ST E 155FT N AVE H-8 (PROP) 0.5 MI S AVE H	SL 1173
LANCASTR (1962)	2416.668	CSBM MON MKD (BM 107-26 1961 RE 58 69) IN CONC SQ 4IN UP 2FT E PP NO 955497E 68FT W C/L 90TH E + 30FT S C/L AVE I	SL 1174
LANCASTR (1962)	2427.637	CSBM MON MKD (BM 107-25 1961 RE 58 69) IN CONC SQ 4IN UP 3FT E PP NO 771405E 35FT E C/L 90TH ST E + 550FT N AVE I-8 (PROP)	SL 1175
LANCASTR (1962)	2457.604	CSBM MON MKD (BM 107-23 1961 RE 58 69) IN CONC SQ 4IN UP 1FT N NLY PROP LINE GLENDALE AUTO PARTS YARD 90FT W C/L 90TH ST E + 29FT S C/L AVE J-8 (PROP)	SL 1177
LANCASTR (1962)	2475.683	CSBM MON MKD (BM 107-22 1961 RE 58 69) IN CONC SQ 2FT W TP NO K9248Y 27FT W C/L 90TH ST E + 60FT S C/L AVE K	SL 1178
LANCASTR (1962)	2490.460	CSBM MON MKD (BM 107-21 1961 RE 58 69) IN CONC SQ 3IN UP 3FT E PP NO 771366E 33FT E C/L 90TH ST E + 45FT S C/L AVE K-8 (DIRT RD)	SL 1179
LANCASTR (1962)	2498.055	CSBM MON MKD (BM 107-20 1961 RE 58 69) IN CONC SQ 3FT S PP NO 800334E 60FT W C/L 90TH ST E + 30FT S C/L AVE L (DIRT RD)	SL 1180
LANCASTR (1962)	2513.213	CSBM MON MKD (BM 107-19 1961 RE 58 69) IN CONC SQ 3FT E PP NO 771347E 34FT E C/L 90TH ST E + 35FT N C/L AVE L-8 (DIRT RD)	SL 1181

QUAD-YEAR	ELEV	DESCRIPTION (INCLUDE QUAD AND YEAR IN DESCRIPTION)	BM NUMBER
BASELINE (1955)	2525.854	CSBM MON MKD (BM 107-18 1961 RE 58 69) IN CONC SQ 4IN UP 6FT NE PP NO 771338E 36FT N C/L AVE M + 36FT E C/L 90TH ST E	SL 1182
LANCASTR (1962)	2449.053	L+T IN SE COR CONC PORCH @ NE COR HSE 115FT S C/L AVE D + 125FT E C/L 95TH ST W (DIRT RD)	SL 1207
LANCASTR (1962)	2448.829	CS MON 14IN DN @ C/L INT AVE D (PAVED) + 95TH ST W (DIRT RD) MKD (T8N R13W 1/4 SEC COR 18-19)	SL 1208
LANCASTR (1962)	2461.719	RDBM TAG 1FT N S EDGE + 8FT E OF W EDGE CONC SLAB 110FT N C/L AVE D + 215FT E C/L 100TH ST W	SL 1209
LANCASTR (1962)	2460.682	CS MON 20IN DN @ C/L INT AVE D (PAVED) + 100TH ST W (DIRT RD) MKD (T8N R13W R14W SEC COR 13, 18,19,24)	SL 1210
LANCASTR (1962)	2474.712	L+BN IN CONC AROUND 3IN IP 77FT N C/L AVE D + 22FT E C/L 105TH ST W (DIRT RD)	SL 1211
LANCASTR (1962)	2472.235	CS MON 24IN DN @ C/L INT AVE D + 105TH ST W (DIRT RD) MKD (T8N R14W 1/4 SEC COR 13,24)	SL 1212
LANCASTR (1962)	2485.465	CS MON 14IN DN @ C/L INT AVE D + 110TH ST W MKD (T8N R14W SEC COR 13,14,23,24)	SL 1213
LANCASTR (1962)	2488.062	RDBM MON 6FT E PP NO 1218851E 28FT N C/L AVE D + 235FT W C/L 110TH ST W 2IN IP WITNESS 3FT UP 2FT N	SL 1214
LANCASTR (1962)	2500.838	CS MON 10IN DN @ C/L INT AVE D + 115TH ST W (DIRT RD)	SL 1215
LANCASTR (1962)	2501.755	RDBM MON 6FT E PP NO 1218863E 45FT N C/L AVE D + 195FT W C/L 115TH ST W (DIRT RD) 2IN IP WITNESS 3FT UP 2FT N	SL 1216
LANCASTR (1962)	2513.668	RDBM TAG IN NWLY LEG OF W+P HIGH TENSION LINE TOWER NO 212-4 140FT N C/L AVE D + 165FT E C/L 120TH ST W (PROP BUT UNIMPROVED)	SL 1217
LANCASTR (1962)	2511.949	CS MON 15IN DN @ C/L INT AVE D + 120TH ST W (PROP BUT UNIMPROVED) MKD (T8N R14W SEC COR 14, 15,22,23)	SL 1218
LANCASTR (1962)	2525.784	CS MON 24IN DN @ C/L INT AVE D + 125TH ST W (DIRT RD TO N) MKD (T8N R14W 1/4 SEC COR 15,22)	SL 1219
LANCASTR (1962)	2528.384	RDBM MON 6FT E PP NO 1218887 45FT N C/L AVE D + 155FT W C/L 125TH ST W (DIRT RD TO N) 2IN IP WITNESS 3FT UP 2FT N	SL 1220
LANCASTR (1962)	2542.983	CS MON 18IN DN @ C/L INT AVE D + 130TH ST W (PROP BUT UNIMPROVED) MKD (T8N R14W SEC COR 15,16,21,22)	SL 1221
LANCASTR (1962)	2545.988	BR CAP MON IN CONC POST 8IN UP 37FT S C/L AVE D + 31FT W C/L 130TH ST W (PROP BUT UNIMPROVED) MKD (US COAST + GEO TRIAN STA WIND - 1952)	SL 1222
LANCASTR (1962)	2545.338	BR CAP MON IN CONC POST 6IN UP 63FT S C/L AVE D + 29FT W C/L 130TH ST W (PROP BUT UNIMPROVED) MKD (US COAST + GEO REF MARK WIND NO 1-1952)	SL 1223
LANCASTR (1962)	2576.528	RDBM TAG IN CONC BASE OF NELY LEG OF SO CALIF EDISON HIGH TENSION TOWER NO 51-4 200FT S C/L AVE D + 0.2 MI W 135TH ST W (PROP BUT UNIMPROV)	SL 1224

QUAD-YEAR	ELEV	DESCRIPTION (INCLUDE QUAD AND YEAR IN DESCRIPTION)	BM NUMBER
LANCASTR (1962)	2750.950 2570.950	RDBM TAG IN CONC BASE OF SWLY LEG OF SO CALIF EDISON HIGH TENSION TOWER 60FT N C/L AVE D + 0.2 MI W 135TH ST W	SL 1225
LANCASTR (1962)	2575.455	CS MON 18IN DN @ C/L INT AVE D + 140TH ST W (DIRT RD) MKD (T8N R14W SEC COR 16,17,20,21)	SL 1226
LANCASTR (1962)	2577.266	RDBM MON 6FT E PP NO 1218924E 45FT N C/L AVE D + 153FT W C/L 140TH ST W (DIRT RD) 2IN IP WITNESS 3FT UP 2FT N	SL 1227
LANCASTR (1962)	2593.061	CS MON 24IN DN @ C/L INT AVE D + 145TH ST W (PROP DIRT RD TO S) MKD (T8N R14W 1/4 SEC COR 17,20)	SL 1228
LANCASTR (1962)	2595.199	RDBM MON 6FT E PP NO 1218936E 45FT N C/L AVE D + 185FT W C/L 145TH ST W (PROP DIRT RD TO S) 2IN IP WITNESS 3FT UP 2FT N	SL 1229
LANCASTR (1962)	2611.274	RDBM MON 6FT E PP NO 121958E 40FT N C/L AVE D + 190FT E C/L 150TH ST W (PROP DIRT RD) 2IN IP WITNESS 3FT UP 2FT N	SL 1230
LANCASTR (1962)	2611.895	CS MON 24IN DN @ C/L INT AVE D + 150TH ST W (PROP DIRT RD)	SL 1231
LANCASTR (1962)	2625.622	RDBM MON 6FT W PP NO 1219158E 40FT N C/L AVE D + 118FT E C/L 155TH ST W (PROP DIRT RD) 2IN IP WITNESS 3FT UP 2FT N	SL 1232
LANCASTR (1962)	2625.978	CS MON 18IN DN @ C/L INT AVE D + 155TH ST W (PROP DIRT RD) MKD (T8N R14W 1/4 SEC COR 18,19)	SL 1233
LANCASTR (1962)	2645.302	CS MON 16IN DN @ C/L INT AVE D + 160TH ST W (DIRT RD) MKD (T8N R14W R15W SEC COR 13,18,19,24)	SL 1234
LANCASTR (1962)	2647.085	RDBM MON 6FT E PP NO 1312422E 28FT N C/L AVE D + 160FT W C/L 160TH ST E (DIRT RD) 2IN IP WITNESS 3FT UP 2FT N	SL 1235
LANCASTR (1962)	2663.533	CS MON 26IN DN @ C/L INT AVE D + 165TH ST (PROP BUT UNIMPROVED) MKD (T8N R15W 1/4 SEC COR 13,24)	SL 1236
LANCASTR (1962)	2667.946	RDBM MON 6FT E PP NO 1312410E 28FT N C/L AVE D + 170FT W C/L 165TH ST W (PROP BUT UNIMPROVED) 2IN IP WITNESS 3FT UP 2FT N	SL 1237
LANCASTR (1962)	2687.610	RDBM MON 6FT E PP NO 1312399E 26FT N C/L AVE D + 73FT E C/L 170TH ST W (DIRT RD) 2IN IP WITNESS 3FT UP 2FT N	SL 1238
LANCASTR (1962)	2685.926	CS MON 20IN DN @ C/L INT AVE D + 170TH ST W (DIRT RD) MKD (T8N R15W SEC COR 14,13,23,24)	SL 1239
LANCASTR (1962)	2711.707	CS MON 24IN DN @ C/L INT AVE D + 175TH ST W (PROP) MKD (T8N R15W 1/4 SEC COR 14,23)	SL 1240
LANCASTR (1962)	2712.885	RDBM MON IN WELL W/COVER 6FT E PP NO 1312386E 45FT N C/L AVE D + 170FT W C/L 175TH ST W (PROP) 2IN IP WITNESS 3FT UP 2FT N	SL 1241
LANCASTR (1962)	2731.978	RDBM MON IN WELL W/COVER 8FT E PP NO 1312375E 45FT N C/L AVE D + 48FT E C/L 180TH ST W (PROP) 2IN IP WITNESS 3FT UP 2FT N	SL 1242
LANCASTR (1962)	2731.980	CS MON 18IN DN @ C/L INT AVE D + 180TH ST W (PROP)	SL 1243

QUAD-YEAR	ELEV	D E S C R I P T I O N (INCLUDE QUAD AND YEAR IN DESCRIPTION)	BM NUMBER
LANCASTR (1962)	2752.278	RDBM MON IN WELL W/COVER 8FT W PP NO 1312364E 45FT N C/L AVE D + 220FT E 185TH ST W (PROP) 80FT E WEEVIL INN CAFE 2IN IP WITNESS 3FT UP 2FT N	SL 1244
LANCASTR (1962)	2755.119	RDBM TAG @ N EDGE CONC ISL OF GAS PUMP 8FT E OF W END OF ISL 75FT S C/L AVE D + 100FT E C/L 185TH ST W (PROP)	SL 1245
LANCASTR (1962)	2771.015	CS MON 24IN DN @ C/L INT AVE D + 190TH ST W (DIRT RD) MKD (T8N R15W SEC COR 16,15,21,22)	SL 1246
LANCASTR (1962)	2773.530	RDBM MON IN WELL W/COVER 8FT E PP NO 1312350E 45FT N AVE D + 190FT W C/L 190TH ST W (DIRT RD) 2IN IP WITNESS 3FT UP 2FT N	SL 1247
LANCASTR (1962)	2788.053	CS MON 18IN DN @ C/L INT AVE D + 195TH ST W (PROP) MKD (T8N R15W 1/4 SEC CGR 16,21)	SL 1248
LANCASTR (1962)	2788.790	RDBM MON IN WELL W/COVER 6FT E PP NO 1312339E 45FT N C/L AVE D + 120FT W C/L 195TH ST W (PROP) 2IN IP WITNESS 3FT UP 2FT N	SL 1249
LANCASTR (1962)	2799.822	CS MON 26IN DN @ C/L INT AVE D + 200TH ST W (PROP) MKD T8N R15W SEC COR 17,16,21,20)	SL 1250
LANCASTR (1962)	2801.463	RDBM MON IN WELL W/COVER 6FT E PP NO 1312327E 45FT N AVE D + 185FT W C/L 200TH ST W (PROP) 2IN IP 3FT UP 2FT N	SL 1251
LANCASTR (1962)	2811.007	CS MON 28IN DN @ C/L INT AVE D + 205TH ST W MKD (T8N R15W 1/4 SEC COR 17,20)	SL 1252
LANCASTR (1962)	2813.824	RDBM MON IN WELL W/COVER 6FT E PP NO 1312315E 45FT N C/L AVE D + 145FT W C/L 205TH ST W (PROP) 2IN IP WITNESS 3FT UP 2FT N	SL 1253
LANCASTR (1962)	2817.923	RDBM TAG IN CONC FTG CHAIN LINK FENCE POST OF EDISON SUB-STA @ SW PROP COR 50FT N C/L AVE D + 50FT E C/L 210TH ST W (DIRT RD)	SL 1254
LANCASTR (1962)	2815.952	CS MON 24IN DN @ C/L INT AVE D + 210TH ST W (DIRT RD) MKD (T8N R15W SEC COR 18,17,20,19)	SL 1255
LANCASTR (1962)	2820.016	BR CAP IN CONC POST 13IN UP 29FT S C/L AVE D + 29FT W C/L 210TH ST W (DIRT RD) MKD (US GEO SURVEY R44-1929)	SL 1256
LANCASTR (1962)	2816.191	CS MON 20IN DN @ C/L INT AVE D + 215TH ST W (PROP) MKD (T8N R15W 1/4 SEC COR 19,19)	SL 1257
LANCASTR (1962)	2817.687	RDBM MON IN WELL W/COVER 7FT E PP NO 1120417E 2IN IP WITNESS 3FT UP 2FT N	SL 1258
LANCASTR (1962)	2811.122	CS MON 22IN DN @ C/L INT AVE D + 220TH ST W (PROP) MKD (T8N R15W SEC COR 13,18,19,24)	SL 1259
LANCASTR (1962)	2811.359	RDBM MON IN WELL W/COVER 6FT NE PP NO 1120427E 33FT N C/L AVE D + 60FT W 220TH ST W (PROP)	SL 1260
LANCASTR (1962)	2821.200	CS MON 20IN DN @ C/L INT AVE D + 225TH ST W (PROP) MKD T8N R16W 1/4 SEC COR 13,24)	SL 1261
LANCASTR (1962)	2824.578	RDBM MON IN WELL W/COVER 5FT NE PP NO 1120439E 28FT N C/L AVE D + 180FT W C/L 225TH ST W (PROP) 2IN IP WITNESS 3FT UP 2 FT N	SL 1262
LANCASTR (1962)	2846.656	CS MON 20IN DN @ C/L INT AVE D + 230TH ST W (DIRT RD) MKD (T8N R16W SEC COR 14,13,24,23)	SL 1263

QUAD-YEAR	ELEV	DESCRIPTION (INCLUDE QUAD AND YEAR IN DESCRIPTION)	BM NUMBER
LANCASTR (1962)	2849.429	RDBM MON IN WELL W/COVER 5FT NE PP NO 1120450E 30FT N AVE D + 170FT W 230TH ST W (DIRT RD) 2IN IP WITNESS 3FT UP 2FT N	SL 1264
LANCASTR (1962)	2878.656	CS MON 20IN DN @ C/L INT AVE D + 235TH ST W (TO THE N) MKD (T8N R16W 1/4 SEC COR 14,23)	SL 1265
LANCASTR (1962)	2882.318	RDBM MON IN WELL W/COVER 5FT NE PP NO 1120461E 30FT N AVE D + 180FT W C/L INT AVE D (TO THE N) + 235TH ST W	SL 1266
LANCASTR (1962)	2919.007	CS MON 18IN DN @ C/L INT AVE D + 240TH ST W MKD (T8N R16W 15,14,23,22)	SL 1267
LANCASTR (1962)	2920.627	RDBM MON IN WELL W/COVER 6FT E OF PP NO 1120472E 28FT N C/L AVE D + 160FT W C/L 240TH ST W	SL 1268
LANCASTR (1962)	2960.521	BR CAP MON NR W END CONC HDWL OF CULV 22FT S C/L AVE D + 45FT W C/L 245TH ST W MKD (USC+GS BM J1044)	SL 1269
LANCASTR (1962)	2960.421	BR CAP MON IN CTR OF CONC HDWL OF CULV 22FT S C/L AVE D + 40FT W C/L 245TH ST W MKD (CALIF DIV OF HWY BM NO 29 1960)	SL 1270
LANCASTR (1962)	3015.073	USC+GS MON TOP OF 8IN CON POST FLUSH 30FT SW CTR OF PVMT LANCASTER RD 0.7 MI SE AVE D (ST HWY NO 138) 2FT SE 4X4 WHITE WITNESS POST	SL 1271
LANCASTR (1962)	3014.659	CSBM TOP OF 12IN CONC POST 6IN UP 50FT SW C/L AVE D-15 0.5 MI W 235TH ST W @ CURVE TO NW 18FT S OF WLY PRCD OF PVMT MKD (BM 102-56 1957 RE 5869)	SL 1272
LANCASTR (1962)	2972.449	CSBM IN TOP OF 12IN CONC POST 4IN UP 55FT S CTR OF PVMT AVE D-15 + 235TH ST W SW COR 5FT W PP NO 707257E MKD (BM 102-55 1957 RE 5869)	SL 1273
LANCASTR (1962)	2943.526	CSBM IN TOP OF 12IN CONC POST 6IN UP 30FT N CTR OF PVMT AVE D-15 0.25 MI W 224TH ST W @ SE COR OLIVE GROVE MKD (BM 102-54 1957 RE 5869)	SL 1274
LANCASTR (1962)	2884.654	USC+GS MON IN TOP OF 8IN CONC POST FLUSH 30FT N CTR OF PVMT AVE D-15 0.25 MI E 224TH ST W MKD (W-305 1935)	SL 1275
LANCASTR (1962)	2880.670	CSBM TOP OF 12IN CONC POST 6IN UP 32FT N CTR OF PVMT AVE D-15 0.8 MI E 224TH ST W MKD (102- 52 1957 RE 5869)	SL 1276
LANCASTR (1962)	2897.540	CSBM TOP OF 12IN CONC POST 6IN UP 49FT N CTR OF PVMT LANCASTER RD 1.65 MI NW AVE E-15 2 CURVES SE AVE D-15 4.5FT SE OF FENCE COR E SIDE OF NS CLEARED STRIP THROUGH DESERT MKD (BM 102-51 1957 RE 5869)	SL 1277
LANCASTR (1962)	2930.592	CSBM TOP OF 12IN CONC POST 6IN UP 50FT SW CTR OF PVMT LANCASTER RD 1 MI NW AVE E-15 MKD (BM 102-50 1957 RE 5869)	SL 1278
LANCASTR (1962)	2953.103	USC+GS MON IN TOP OF 8IN CONC POST 14IN UP 30FT SW CTR OF PVMT LANCASTER RD 0.45 MI NW AVE E-15 IN SMALL TRI FORMED BY CIRCULAR DIRT RD LEAVING + RETURNING TO THE HWY MKD (X-305 1935)	SL 1279
LANCASTR (1962)	2953.444	CSBM TOP OF 12IN CONC POST 6IN UP 33FT SW OF SE PROD LANCASTER RD 10FT MWLY PROD CTR AVE E-15 13FT NW 2IN IP MKD (BM 102-48 1957 RE 5869)	SL 1280

QUAD-YEAR	ELEV	DESCRIPTION (INCLUDE QUAD AND YEAR IN DESCRIPTION)	BM NUMBER
LANCASTR (1962)	2900.792	CSBM IN WELL 8IN DN @ CTR AVE E-15 0.5 MI W 190TH ST W 65FT E OF FIELD RD TO S ON WLY LINE BOARD FENCES MARKING LOT COR N MKD (BM 102-47 1957 RE 5869)	SL 1281
LANCASTR (1962)	2871.225	CSBM TOP OF 12IN CONC POST 6IN UP 15FT S CTR OF OF PVMT AVE E-15 132FT W CTR OF PVMT PROD 190TH ST W NE SIDE OF CURVE 19FT NE GUARD RAIL MKD (BM 102-46 1957 RE 5869)	SL 1282
LANCASTR (1962)	2895.899	CSBM TOP OF 12IN CONC POST 6IN UP 55FT S CTR OF PVMT AVE F-8 81FT E CTR OF PVMT PROD 190TH ST W 27FT E PP NO 699391 E MKD (BM 102-45 1957 RE 5869)	SL 1283
LANCASTR (1962)	2872.146	CSBM TOP OF 12IN CONC POST 4IN UP 51FT S CTR OF PVMT AVE F-8 0.5 MI E 190TH ST W @ DIRT DRWY TO HSE NO 18350 3FT N TRANSFORMER POLE NO 699381E MKD (BM 106-44 1957 RE 5869)	SL 1284
LANCASTR (1962)	2831.862	CSBM TOP OF 12IN CONC POST 4IN UP 55FT S CTR OF PVMT AVE F-8 @ 180TH ST W (DIRT RD RUNNING SLY TO B JOHNSON BOX 30 + LEO F ELSER BOX 31 3FT N PP NO 699364E MKD (BM 102-43 1957 RE 5869)	SL 1285
LANCASTR (1962)	2808.094	CSBM TOP OF 12IN CONC POST 6IN UP 57FT S CTR OF PVMT AVE F-8 0.5 MI W 170TH ST W 2FT W PP NO 699359E MKD (BM 102-42 1957 RE 5869)	SL 1286
LANCASTR (1962)	2785.411	CSBM TOP OF 12IN CONC POST 4IN UP 36FT S C/L 6FT E C/L PROD TO S 170TH ST W MKD (BM 102-41 1957 RE 5869)	SL 1287
LANCASTR (1962)	2784.384	USGS MON ON TOP OF 3-1/2IN IP 43FT W CTR OF PVMT LANCASTER RD @ AVE F-8 2FT S FENCE COR @ SE COR OLD FAIRMONT SCHOOL (VACATED)	SL 1288
LANCASTR (1962)	2790.830	CSBM FLUSH 1FT UP RD GRADE 25FT NE CTR OF PVMT LANCASTER RD 0.5 MI NW 160TH ST W UNDER BARBED WIRE FENCE 31FT SW PP NO 699340E MKD (BM 102-39 1957 RE 5869)	SL 1289
LANCASTR (1962)	2782.848	CSBM TOP OF 12IN CONC POST 4IN UP 90FT NE CTR OF PVMT 160TH ST W 0.4 MI N AVE E-8 @ CB TO W 29FT E PP NO 699344E MKD (BM 102-38 1957 RE 5869)	SL 1290
LANCASTR (1962)	2829.234	CSBM IN TOP OF 12IN CONC POST 6IN UP 34FT N CTR OF PVMT AVE G-8 27FT W CTR OF PVMT 160TH ST W 1FT E OF FENCE MKD (BM 102-37 1957 RE 5869)	SL 1291
LANCASTR (1962)	2770.475	CSBM IN TOP OF 12IN CONC POST 6IN UP 24FT N CTR OF PVMT LANCASTER RD 0.5 MI E 160TH ST W 9FT NW OF 12IN FENCE COR POST MKD (BM 102-36 1957 RE 5869)	SL 1292
LANCASTR (1962)	2748.982	USGS IN TOP OF 6IN CONC POST 4IN UP 42FT S CTR OF PVMT LANCASTER RD 12FT W SLY PROD DIRT RD N @ INT W/SEC LINES BTWN SEC 5,6 T7N R14W OPP MAIL BOX NO 14863 MKD (R-39 1929)	SL 1293
LANCASTR (1962)	2679.972	CSBM TOP OF 12IN CONC POST 4IN UP 113FT S C/L LANCASTER RD 2.4 MI W WILLOW SPRINGS RD ON LEVEL AREA HALFWAY UP RISE 307FT W FENCE COR 1FT N OF FENCE MKD (BM 102-34 1957 RE 5869)	SL 1294
LANCASTR (1962)	2623.372	CSBM TOP OF 12IN CONC POST 4IN UP 25FT N C/L LANCASTER RD @ SEC LINE BTWN SECS 4,5 T7N R14W UNDER FENCE 3FT W FENCE COR MKD (BM 102-33 1957 RE 5869)	SL 1295

QUAD-YEAR	ELEV	DESCRIPTION (INCLUDE QUAD AND YEAR IN DESCRIPTION)	BM NUMBER
LANCASTR (1962)	2604.573	CSBM TOP OF 12IN CONC POST 3IN UP 25FT N C/L LANCASTER RD 1 MI NW WILLOW SPRINGS RD NR C/L PI OF A CURVE 3FT S OF FENCE COR MKD (BM 102-32 1957 RE 5869)	SL 1296
LANCASTR (1962)	2585.132	USC+GS MON IN TOP OF 8IN CONC POST FLUSH 4FT DN GRADE OF RD 42FT S C/L LANCASTER RD 0.7 MI W WILLOW SPRINGS RD 2FT N OF FENCE MKD (Z-305 1935)	SL 1297
LANCASTR (1962)	2581.785	CSBM TOP OF 12IN CONC POST 4IN UP 46FT S OF CTR LANCASTER RD 0.5 MI W WILLOW SPRINGS RD 1FT NE FENCE MKD (BM 102-30 1957 RE 5869)	SL 1298
LANCASTR (1962)	2568.121	CSBM TOP OF 12IN CONC POST FLUSH 27FT N CTR LANCASTER RD 30FT W CTR OF INT WILLOW SPRINGS RD 0.6FT N OF FENCE 4FT E PP NO 402818E MKD (BM 102-29 1957 RE 5869)	SL 1299
LANCASTR (1962)	2535.444	CSBM TOP OF 12IN CONC POST 4IN UP 44FT N CTR LANCASTER RD @ 120TH ST W 0.5 MI N AVE I 0.5 MI E WILLOW SPRINGS RD 35FT S FENCE COR MKD (BM 102-38 1958 RE 5869)	SL 1300
LANCASTR (1962)	2546.546	CSBM TOP OF 12IN CONC POST FLUSH 25FT N C/L PROD AVE I 55FT E C/L PRGD 120TH ST W 47FT SW CTR OF PVMT 3FT E PP NO K6408Y MKD (BM 102-27 1957 RE 58 69)	SL 1301
LANCASTR (1962)	2519.774	CSBM IN WELL 10IN DN @ AVE I + 115TH ST W 89FT SE PP NO K6295Y 116FT SW PP NO K6294Y	SL 1302
LANCASTR (1962)	2497.295	CSBM IN WELL 15IN DN 54FT N INT AVE I @ 110TH ST W (MON IS SEC COR TO SECS 11,12,13,14 T7N R14W)	SL 1303
LANCASTR (1962)	2480.925	USC+GS MON TOP OF 8IN CONC POST FLUSH 33FT N CTR AVE I 0.5 MI E 110TH ST W 14FT SE OF SW COR EDISON CO TOWER NO 57.4 MK (A-306-1935)	SL 1304
LANCASTR (1962)	2477.264	CSBM IN WELL 14IN DN 4FT N CTR AVE I 0.5 MI E 110TH ST W 23FT SE PP NO K6268Y MON IS 1/4 COR TO SEC 12,13 T7N R14W	SL 1305
LANCASTR (1962)	2456.164	CSBM IN WELL 18IN DN 5FT N CTR AVE I @ 100TH ST W ON SLY PROD W EDGE OF DIRT RD TO N 55FT SE PP NO K6258Y 35FT N ANGLE IRON FENCE COR POST (MON IS COR TO SEC 7,12,13,18 T7N R14W R13W)	SL 1306
LANCASTR (1962)	2437.419	CSBM TOP OF 12IN CONC POST FLUSH 56FT S CTR AVE I @ 95TH ST W UNDER CTR EDISON CO TOWER NO M2624 44FT W OF FENCE MKD (BM 102-21 1957 RE 5869)	SL 1307
LANCASTR (1962)	2418.146	USGS TOP OF 8IN CONC POST 2FT UP 298FT E CTR 90TH ST W 0.2 MI N AVE I 89FT S OF FIELD RD TO HAY SHED 274FT NE OF NE COR METAL SHED OVER WELL MKD (LINT DEL SUR)	SL 1308
LANCASTR (1962)	2740.528	T+SPK ON E SIDE OF TP NO M12589Y 55FT E C/L 170TH ST W (PROP) 105FT N C/L AVE E (PROP) 1 MI S AVE D	SL 1309
LANCASTR (1962)	2736.219	CS MON 30IN DN @ C/L INT 170TH ST W + AVE E (PROP) MON IS CLD BARBED WIRE FENCE LINE 40FT W C/L OF GRADED DIRT RD + 1 MI S AVE D MKD (T8N R15W SEC COR 23,24,26)	SL 1310
LANCASTR (1962)	2755.851	T+SPK IN E SIDE TP NO 12603Y 55FT E C/L 170TH ST W (PROP) + 115FT S C/L AVE E-8 (PROP) 1.5 MI S AVE D	SL 1311

QUAD-YEAR	ELEV	DESCRIPTION (INCLUDE QUAD AND YEAR IN DESCRIPTION)	BM NUMBER
LANCASTR (1962)	2754.684	CS MON 26IN DN @ C/L INT 170TH ST W + AVE E-8 (PROP) 40FT W C/L GRADED DIRT RD + 1.5 MI S AVE D MKD (T8N R15W 1/4 SEC COR 26,25)	SL 1312
LANCASTR (1962)	2773.814	CS MON 24IN DN @ C/L INT 170TH ST W + AVE F (PROP) 40FT W GRADED DIRT RD + 2 MI S AVE D + 0.5 MI N NEENACH RD	SL 1313
LANCASTR (1962)	2774.769	T+SPK IN E SIDE TP NO M12619Y 50FT E C/L 170TH ST W (PROP) + 45FT S AVE F (PROP) 2 MI S AVE D + 0.5 MI N NEENACH RD	SL 1314
LANCASTR (1962)	2586.203	CSBM TOP OF 12IN CONC POST 6IN UP 34FT NW CTR OF WILLOW SPRINGS RD 0.4 MI S FROM LANCASTER RD 160FT S FROM DIRT DRWY TO HSE NO 45715 1FT FROM EACH OF TWO 4FT BARBED WIRE FENCES WLY FROM INT OF FENCES MKD (BM 113-8 1960 RE 5869)	SL 1315
LANCASTR (1962)	2617.803	CSBM TOP OF 12IN CONC POST 6IN UP 2FT LOWER THAN PVMT 26FT SELY FROM CTR WILLOW SPRINGS RD 0.9 MI S LANCASTER RD 0.1 MI NELY CULV NO 0.97 MKD (BM 113-7 1960 RE 5869)	SL 1316
LANCASTR (1962)	2676.906	CSBM TOP OF 12IN CONC POST 6IN UP 32FT N CTR WILLOW SPRINGS RD 3 MI N ELIZABETH LAKE PINE CN RD 1100FT NELY FROM CROSSING OF PP LINE W/RD MKD (BM 113-6 1960 RE 5869)	SL 1317
LANCASTR (1962)	2739.355	US FOREST RESERVE MON ON 3-1/2IN IP 18IN UP 6FT HIGHER THAN PVMT ON SIDE OF BANK 33FT SWLY CTR WILLOW SPRINGS RD 2.5 MI N ELIZABETH LAKE PINE CN RD 7FT W PP NO 294508E MKD (US FOREST RESERVE BOUNDARY POST NO 80 1905)	SL 1318
LANCASTR (1962)	2804.145	CSBM TOP OF 12IN CONC POST 6IN UP 4FT BELOW PVMT 30FT S CTR OF WILLOW SPRINGS RD 2.1 MI N ELIZABETH LAKE PINE CN RD + 12FT S YELLOW SIGN MKD (DIP) MKD (BM 113-4 1960 RE 5869)	SL 1319
LANCASTR (1962)	2910.544	USC+GS MON TOP OF 12IN CONC POST 6IN UP 30FT NE CTR WILLOW SPRINGS RD U.7 MI N ELIZABETH LAKE PINE CN RD 2FT S PP NO 29123M MKD (USC+GS MON P-1044 1960)	SL 1320
LANCASTR (1962)	3069.327	CSBM TOP OF 12IN CONC POST 6IN UP 33FT N CTR WILLOW SPRINGS RD 1.1 MI NLY ELIZABETH LAKE PINE CN RD 160FT NELY TP NO 29139M + 120FT N WLY TP NO 29138M MKD (BM 113-2 1960 RE 5869)	SL 1321
LANCASTR (1962)	3233.637	CSBM TOP OF 12IN CONC POST 6IN UP 27FT SELY CTR WILLOW SPRINGS RD 0.55 MI NLY ELIZABETH LAKE PINE CN RD 2FT SE PP NO 307253E MKD (BM 113-1 1960 RE 5869)	SL 1322
LANCASTR (1962)	3296.751	CSBM TOP OF 12IN CONC POST 6IN UP 31FT W OF ELY WILLOW SPRINGS RD 73FT N ELIZABETH LAKE PINE CN RD 3FT N PP NO 29176M MKD (BM 111-32 1960 RE 5869)	SL 1323
LANCASTR (1962)	3279.471	CSBM 15FT W + 17FT S INT ELIZABETH LAKE PINE CN RD + PEEKABOO RD NW END OF W RK WL TO ENT ELIZABETH LAKE RANCH CLUB MKD (BM PC 23)	SL 1324
LANCASTR (1962)	3286.676	BT SPK IN L 79FT S + 35FT W INT ELIZABETH LAKE PINE CN RD + RANCH CLUB RD IN W HDWL N SEC WINDWL 1FT FROM END	SL 1325
LANCASTR (1962)	3299.849	CSBM ON ELIZABETH LAKE PINE CN RD 0.3 MI W JOHNSON RD @ FENCE COR 30FT N OF NE COR OF BARN MKD (BM PC 22)	SL 1326

QUAD-YEAR	ELEV	DESCRIPTION (INCLUDE QUAD AND YEAR IN DESCRIPTION)	BM NUMBER
LANCASTR (1962)	3332.712	CSBM @ NE COR ELIZABETH LAKE PINE CN RD + JOHNSON RD 15FT S PP NO 524086E MKD (BM TC 21)	SL 1327
LANCASTR (1962)	3329.843	US FOREST RESERVE IP W/4IN BR TABLET 30FT S + 40FT E CTR ELIZABETH LAKE PINE CO RD + JOHNSON RD @ SE COR @ NW COR OF 4FT BARBED WIRE FENCE 6FT W PP NO 1014658E MKD (US FOREST RESERVE BOUNDARY POST NO 83, 1905, T7N S28, R14W S33, WCS 29, S32)	SL 1328
LANCASTR (1962)	3401.653	USGSBM 22FT S CTR ELIZABETH LAKE PINE CN RD SE COR 43FT FROM PP NO 1295677E @ WLY END 4FT BOARD FENCE MKD (USGS, RESET SEPTEMBER 1939, ELEVATION ABOVE SEA DATUM 3403FT)	SL 1329
LANCASTR (1962)	3448.365	CSBM IN 12IN CONC POST 6IN UP 30FT N ELIZABETH LAKE PINE CN RD 0.35 MI E SAN FRANCISQUITO RD 2FT N TP LA CO FIRE DEPT NO 111682 MKD (BM 111-28 1960 RE 5869)	SL 1330
BASELINE (1955)	2525.186	CSBM TOP OF 12IN CONC POST 5IN UP 34FT N C/L AVE M 0.5 MI W 30TH ST W 6FT E PP NO 1054605E OPP DRWY TO HSE NO 3356 MKD (BM 104-7 1958 RE 5869)	SL 1373A
BASELINE (1955)	2516.552	CS MON @ C/L INT AVE M + 35TH ST W 175FT W OF DRWY TO HSE NO 3356 AVE M MKD (R12W T7N OVER T6N 31-6 1/4 COR)	SL 1374A
BASELINE (1955)	2567.289	CS MON IN WELL W/COVER @ C/L INT AVE M + 45TH ST W (PROP) ON CREST OF HILL 800FT W C/L INT AVE M + QUARTZ HILL RD	SL 1376A
BASELINE (1955)	2529.271	CSBM TOP OF 12IN CONC POST 4IN UP 41FT W BT SPK W+T @ INT OF AVE M + 47TH ST W 28FT S CTR OF PVMT 4FT W PP NO 168073 MKD (BM 104-12 1958 RE 5869)	SL 1377A
BASELINE (1955)	2528.478	CS TAG W END OF N HDWL ON NE COR AVE M + SIERRA HWY 43FT N + 248FT E C/L INT	SL 1425
LANCASTR (1962)	2463.746	USGS MON 10IN UP (LEANING N) 0.25MI N AVE L + 150FT E C/L SIERRA HWY MKD (BM 36) MARKER POST 1FT W	SL 1426
LANCASTR (1962)	2423.155	CSBM MON 2IN DN ON SE COR SIERRA HWY + AVE K 198FT S + 62FT E C/L INT MKD (BM 101-126)	SL 1427
LANCASTR (1962)	2422.164	L+BN SE COR CONC APRON OF GAS STA ON SW COR SIERRA HWY + AVE K 133FT S + 61FT W C/L INT MKD (BL)	SL 1428
LANCASTR (1962)	2396.993	RDBM TAG N CB 1FT W BCR @ NW COR SIERRA HWY + AVE J8 86FT W + 18FT N C/L INT	SL 1429
LANCASTR (1962)	2327.897	L+BR W CB 1FT N BCR @ SW COR AVE H8 + BEECH AVE 49FT S + 20FT W C/L INT	SL 1430
LANCASTR (1962)	2327.212	SQ HD SPK N CB 4FT W BCR @ NW COR AVE H8 + BEECH AVE 25FT N + 48FT W C/L INT	SL 1431
LANCASTR (1962)	2326.760	RDBM TAB W END OF N HDWL ON NW COR SIERRA HWY + AVE H 30FT N + 42FT W C/L INT	SL 1432
LANCASTR (1962)	2326.067	CSBM MON 3IN UP ON NE COR SIERRA HWY + AVE H 155FT N + 90FT E C/L INT MKD (BM 101-135)	SL 1433
LANCASTR (1962)	2317.469	6X6 CONC POST W/RAM SET 50FT S CULV G90+50 57FT W C/L SIERRA HWY + 0.6MI N AVE H POST MKD (C)	SL 1434

QUAD-YEAR	ELEV	D E S C R I P T I O N (INCLUDE QUAD AND YEAR IN DESCRIPTION)	BM NUMBER
LANCASTR (1962)	2315.203	CS MON ON NE COR SIERRA HWY + AVE G 124FT N + 97FT E C/L INT MKD (BM 101-137 1957)	SL 1435
LANCASTR (1962)	2315.232	RDBM TAG CTR OF S HDWL ON NW COR SIERRA HWY + AVE G 185FT N + 35FT W C/L INT	SL 1436
LANCASTR (1962)	2308.846	RDBM TAG CTR OF S HDWL ON NW COR SIERRA HWY + AVE F8 (PROP) 200FT N + 50FT W C/L INT	SL 1437
LANCASTR (1962)	2308.676	L+BN CTR OF N HDWL ON NW COR SIERRA HWY + AVE F8 (PROP) 225FT N + 50FT W C/L INT MKD (BM)	SL 1438
LANCASTR (1962)	2307.394	RDBM TAG CONC BASE OF SEMAPHORE NO 4022 123FT E C/L SIERRA HWY + 0.1MI S AVE F	SL 1439
LANCASTR (1962)	2302.804	RD HD SPK N END OF E HDWL OF BRIDGE NO G215+50 ON NE COR SIERRA HWY + AVE E 88FT N + 43FT E C/L INT (SPK SET IN CHIS SQ)	SL 1440
LANCASTR (1962)	2302.612	L+PK NAIL N END OF E HDWL OF BRIDGE NO 53-510 0.15MI S AVE D8 (PROP) 25FT E C/L SIERRA HWY	SL 1441
LANCASTR (1962)	2299.598	CSBM MON 2IN UP ON SE COR SIERRA HWY + AVE D8 (PROP) 90FT E + 250FT S C/L INT MKD (BM 101-144 1957)	SL 1442
LANCASTR (1962)	2303.869	RDBM TAG W CB SIERRA HWY (E CB OF ISLAND) 31FT W C/L + 20FT S C/L AVE D (HWY 138)	SL 1443
LANCASTR (1962)	2302.156	L+PK NAIL CTR OF N HDWL ON NW COR SIERRA HWY + AVE D (HWY 138) 172FT W + 50FT N C/L INT	SL 1444
LANCASTR (1962)	2303.592	6X6 CONC POST W/NAIL 10IN UP ON SW COR SIERRA HWY + AVE C8 (PROP) NR NE COR CG SANITATION DIST YD NO 14 50FT S + 56FT W C/L INT POST MKD (C)	SL 1445
LANCASTR (1962)	2301.905	CSBM MON 2IN UP ON NE COR SIERRA HWY + PROPOSED AVE C8 275FT N + 40FT E C/L INT MKD (BM 101-146 1957)	SL 1446
LANCASTR (1962)	2305.109	RDBM TAG N END OF BRIDGE 53 512 NO G322+85 25FT W C/L SIERRA HWY + 90FT N C/L AVE C	SL 1447
LANCASTR (1962)	2304.711	RDBM TAG N END CONC HDWL 25FT W C/L SIERRA HWY + 0.6MI N AVE C	SL 1448
LANCASTR (1962)	2304.444	8IN DIA CONC POST W/IRON SPK 35FT E C/L SIERRA HWY 0.75MI N AVE C 2FT IP MARKER 1FT S MKD (W56)	SL 1449
LANCASTR (1962)	2303.746	WIRE SPK S END CONC HDWL OF CULV G383+10 25FT E C/L SIERRA HWY + 106FT S C/L AVE B	SL 1450
LANCASTR (1962)	2307.336	RD HD SPK S END OF E HDWL OF BRIDGE NO G407+90 50 514 25FT E C/L SIERRA HWY + 0.65MI N AVE B MKD (BM 101-150)	SL 1451
LANCASTR (1962)	2307.380	RDBM TAG N END OF W HDWL OF BRIDGE G407+90 53 514 25FT W C/L SIERRA HWY + HWY + 0.65MI N AVE B	SL 1452
LANCASTR (1962)	2307.352	WIRE SPK S END CONC HDWL OF CULV G426+19 ON SE COR SIERRA HWY + AVE A 25FT E + 208FT S C/L INT	SL 1453
LANCASTR (1962)	2304.784	CS MON 48IN DN ON C/L INT AVE D + 15TH ST W (PROP) MKD (1/4 COR 16-21 R12W T8N)	SL 1454
LANCASTR (1962)	2307.424	RDBM TAG CTR N HDWL OF CULV L 1237+60 23FT N C/L AVE D + 15FT W C/L 15TH ST W (PROP)	SL 1455

QUAD-YEAR	ELEV	DESCRIPTION (INCLUDE QUAD AND YEAR IN DESCRIPTION)	BM NUMBER
LANCASTR (1962)	2313.512	USC+GS BR DISK IN NW COR OF E CONC HDWL @ ENT TO SANITATION DIST NO 14 YD 39FT N C/L AVE D + 155FT E C/L PROP 20TH ST W MKD (D1154 1961)	SL 1456
LANCASTR (1962)	2312.558	L+PK IN W END CONC GATE PAD TO SANITATION DIST NO 14 YD 40FT N C/L AVE D + 125FT E C/L PROP 20TH ST W MKD (ELEV 2314.170)	SL 1457
LANCASTR (1962)	2318.609	RDBM TAG CTR OF CONC HDWL L 1185+00 23FT N C/L AVE D + 75FT E C/L PROP 25TH ST W	SL 1458
LANCASTR (1962)	2319.941	RDBM TAG CTR OF CONC HDWL L 1176+00 21FT N C/L AVE D + 816FT W C/L PROP 25TH ST W	SL 1459
LANCASTR (1962)	2328.534	CHIS (X) ON ACHOR BOLT IN WATER TANK FIG ON TANK ON NE COR AVE D + 30TH ST W (PROP) 127FT N + 3FT E C/L INT	SL 1460
LANCASTR (1962)	2326.690	USC+GS BR DISK E END CONC HDWL L 1157+00 21FT N C/L AVE D + 40FT W C/L PROP 30TH ST W MKD (C1154 1961)	SL 1461
LANCASTR (1962)	2335.275	RDBM TAG CTR CONC HDWL L 1134+00 21FT N C/L AVE D + 330FT E C/L PROP 35TH ST W	SL 1462
LANCASTR (1962)	2338.387	RDBM TAG CTR CONC HDWL L 1125+00 21FT N C/L AVE D + 570FT W C/L PROP 35TH ST W	SL 1463
LANCASTR (1962)	2343.608	USGS MON 12IN UP ON SE COR AVE D + 40TH ST W 40FT S + 12FT E C/L INT MKD (R46 1929) (NW 1/4)	SL 1464
LANCASTR (1962)	2345.654	RDBM TAG CTR CONC HDWL L 1101+00 21FT N C/L AVE D + 356FT W C/L PROP 40TH ST W	SL 1465
LANCASTR (1962)	2351.740	STATE HWY BR CAP CTR CONC HDWL L 1085+00 21FT N C/L AVE D + 964FT E C/L PROP 45TH ST W	SL 1466
LANCASTR (1962)	2354.466	CS MON 20IN DN ON C/L INT AVE D + 45TH ST W MKD (1/4 SEC COR 13-24 T8N R13W)	SL 1467
LANCASTR (1962)	2367.080	USC+GS REF MON 6IN UP ON NE COR AVE D +50TH ST W 95FT N + 61FT E C/L INT MKD (AVENUE NO 1 1960)	SL 1468
LANCASTR (1962)	2367.842	USC+GS TRI PT STA 4IN UP ON NW COR AVE D + 50TH ST W 102FT N + 92FT W C/L INT MKD (AVENUE 1960)	SL 1469
LANCASTR (1962)	2375.585	RDBM TAG CTR OF CONC HDWL L 1030+00 21FT N C/L AVE D + 490FT E C/L PROPOSED 55TH ST W	SL 1470
LANCASTR (1962)	2377.487	2IN IP W/CUT SPK + CONC COLLAR ON C/L PROD 55TH ST W + 45FT S C/L AVE D	SL 1471
LANCASTR (1962)	2320.475	RDBM TAG W CB 1FT N BCR @ NW COR AVE I + 23RD ST W 76FT N + 30FT W C/L INT	SL 1472
LANCASTR (1962)	2458.358	CS MON IN WELL 24IN DN @ C/L INT 50TH ST W + AVE L8 MKD (1/4 SEC COR 35-36 T7N R13W 1928)	SL 1473
LANCASTR (1962)	2363.884	CS MON IN WELL 12IN DN @ C/L INT 50TH ST W + PROPOSED AVE J8 MKD (1/4 COR 23-24 R13W T7N) USE S EDGE	SL 1474
LANCASTR (1962)	2392.571	CHIS (X) ON S SIDE OF SMH RIM @ SW COR AVE K + 15TH ST W 20FT S + 5FT W C/L INT	SL 1476
LANCASTR (1962)	2393.192	CHIS (X) ON W BOLT OF FIRE HYDT ON SW COR AVE K + 15TH ST W 40FT S + 65FT W C/L INT	SL 1477

QUAD-YEAR	ELEV	DESCRIPTION (INCLUDE QUAD AND YEAR IN DESCRIPTION)	BM NUMBER
LANCASTR (1962)	2366.961	CS BR CAP MON 2IN UP 9FT SE PP 192543E 30FT S C/L AVE I ON C/L 15TH ST E (PROPOSED) 0.5FT E 10TH ST E MKD (T7N R12W SEC 13-WC)	SL 1478
LANCASTR (1962)	2971.965	CSBM MON IN TOP 12IN CONC POST 6IN UP 0.45MI W 245TH ST W ON W SIDE DIRT DR TO HSE NO 24715 61FT N C/L ST HWY 138 10FT NW PP NO 1120495E MKD (BM 102-59 1957 RE 5869)	SL 1479
LANCASTR (1962)	3017.837	CSBM MON IN TOP 12IN CONC POST 6IN UP 0.9MI W OF 245TH ST W 29FT N C/L ST HWY 138 6FT W PP NO 1123606E MKD (BM 102-60 1957 RE 5869)	SL 1480
LANCASTR (1962)	3046.365	LAC DEPT WATER + POWER MON ON TOP 3IN PIPE FLUSH 26FT S C/L ST HWY 138 46FT E WATER + POWER AQUEDUCT 61FT NE COR 5X5FT CONC BLDG MKD (104-A)	SL 1481
LANCASTR (1962)	3052.282	CSBM MON 0.35MI W 260TH ST W 29FT N C/L ST HWY 138 6FT W PP NO 1123627E 12FT SE 4FT IRRIGATION STANDPIPE MKD (BM 102-62 1957 RE 5869)	SL 1482
LANCASTR (1962)	3051.001	CS MON IN TOP 12IN CONC POST 6IN UP 70FT S C/L ST HWY 138 @ A CURVE TO THE N TO 269TH ST W 9FT S OF TP NO 7658Y MKD (BM 102-63 1957 RE 5869)	SL 1483
LANCASTR (1962)	2992.289	USC+GS DISC IN TOP CONC POST 2IN UP ON ST HWY 138 @ W END OF CURVE FROM 269TH ST W OPP HSE NO 27011 60FT S C/L 22FT SW OF PP NO 1123656E MKD (U 305 1935)	SL 1484
LANCASTR (1962)	3010.581	STATE CALIF MON IN TOP OF 8IN CONC POST 9IN DN 249FT S C/L ON SLY PROD OF CULV	SL 1485
LANCASTR (1962)	3009.213	BT SPK 1FT N OF S END CULV HDWL 29FT S C/L ST HWY 138	SL 1486
LANCASTR (1962)	3037.120	CS MON IN TOP 12IN CONC POST 6IN UP 49FT S C/L ST HWY 138 4FT W PP NO 1122597 0.2MI E METTLER AND BURY FARMS AT DIRT RD TO N MKD (BM 102-66 1957 RE 5869)	SL 1487
LANCASTR (1962)	3043.454	CSBM MON IN TOP 12IN CONC POST 6IN UP 0.4MI W METTLER AND BURY FARMS 49FT S C/L ST HWY 138 4FT W PP NO 1123690E 1FT N OF FENCE MKD (BM 102-67 1957 RE 5869)	SL 1488
LANCASTR (1962)	3020.649	USC+GS MON IN TOP 8IN POST 4IN DN 40FT S C/L ST HWY 138 @ DIRT RD TO HSE NO 29300 19FT E OF FENCE COR 83FT E OF CULV 82FT E PP NO 112370E MKD (T 305 1935)	SL 1489
LANCASTR (1962)	3042.028	CSBM MON IN TOP 12IN CONC POST 6IN UP 1.3MI W METTLER AND BURY FARMS 49FT S C/L ST HWY 138 4FT W PP NO 1123711E 39FT E SLY PROD FENCE LINE TO N MKD (BM 102-69 1957 RE 5869)	SL 1490
LANCASTR (1962)	3044.100	CSBM MON IN TOP 12IN CONC POST 6IN UP 48FT S C/L ST HWY 138 OPP HSE NO 29853 4FT W PP NO 1123722E 6FT E FENCE COR 1FT N OF FENCE MKD (BM 102-70 1957 RE 5869)	SL 1491
LANCASTR (1962)	3088.319	CSBM MON IN TOP 12IN CONC POST 4IN UP 50FT NW C/L ST HWY 138 87FT W OF WLY END CULV HDWL 10FT N PP NO 1049047E 1FT SE OF FENCE 5FT SW FENCE COR MKD (BM 102-71 1957 RE 5869)	SL 1492
LANCASTR (1962)	3123.406	CSBM MON IN TOP 12IN CONC POST 6IN UP 3.25MI E OLD RIDGE RT HWY 49FT SE C/L ST HWY 138 16FT W CONC + STEEL CATTLE GUARD GATE 9FT S GUY POLE NO 1049033 1.5FT NW OF FENCE MKD (BM 102-72 1957 RE 5869)	SL 1493

QUAD-YEAR	ELEV	DESCRIPTION (INCLUDE QUAD AND YEAR IN DESCRIPTION)	BM NUMBER
LANCASTR (1962)	3143.900	CSBM MON IN TOP 12IN CONC POST 2IN UP 49FT S C/L ST HWY 138 25FT W TP NO 6/49 1FT N OF FENCE 20FT S OF S END CULV HDWL MKD (BM 102-73 1957 RE 5869)	SL 1494
LANCASTR (1962)	3169.362	CSBM MON IN TOP 12IN CONC POST 6IN UP 2.3MI E OLD RIDGE RT 48FT S C/L ST HWY 138 18FT S OF S END CONC HDWL 1.5FT N OF FENCE MKD (BM 102-74 1957 RE 5869)	SL 1495
LANCASTR (1962)	3209.953	CSBM MON IN TOP 12IN CONC POST 4IN UP 1.75MI E OLD RIDGE RT 48FT S C/L ST HWY 138 17FT S ON PROD HDWL MKD (BM 102-75 1957 RE 5869)	SL 1496
LANCASTR (1962)	3271.062	USC+GS MON IN TOP 8IN CONC POST FLUSH 1.3MI E OLD RIDGE RT 485FT E CULV 50FT N C/L ST HWY 138 75FT E PP NO 1061987E MKD (R 305 1935)	SL 1497
LANCASTR (1962)	3339.308	CSBM MON IN TOP 12IN CONC POST 6IN UP 0.75MI E OLD RIDGE RT 49FT S C/L ST HWY 138 17FT S OF S END CONC HDWL MKD (BM 102-77 1957 RE 5869)	SL 1498
LANCASTR (1962)	3395.679	CSBM MON IN TOP 12IN CONC POST 6IN UP 0.4MI E OLD RIDGE RT 48FT S C/L ST HWY 138 10FT E FENCE COR MKD (BM 102-78 1957 RE 5869)	SL 1499
LANCASTR (1962)	3377.583	BT SPK TOP CONC CULV HDWL @ E SIDE OF INT ST HWY 138 AND OLD RIDGE RT BET THE TWO PVMTS	SL 1500
LANCASTR (1962)	3345.368	USC+GS MON TOP 12IN CONC POST 6IN UP 39FT NE C/L ST HWY 138 0.3MI NW OLD RIDGE RT NR PI OF CURVE 7FT SE GATE 9FT NE PP NO 10610941E MKD (C 370 1953)	SL 1501
LANCASTR (1962)	3324.321	ST HWY MON IN TOP CONC POST 15IN DN 42FT N C/L ST HWY 138 32FT NW PP NO 1061924E 6FT SE KINSEY RANCH SIGN POST 3FT N OF FENCE	SL 1502
LANCASTR (1962)	3322.155	USC+GS MON IN TOP N HDWL CONC BOX CULV 20FT N C/L ST HWY 138 1.4MI NW OLD RIDGE RT MKD (Y 53 1926)	SL 1503
LANCASTR (1962)	3332.583	USC+GS MON IN TOP CONC POST 4IN UP 4.1MI E US HWY 99 28FT N C/L ST HWY 138 @ THE JCT OF A RD NLY 146FT SE PP NO 429894E 11FT E 5IN GATEPOST 1.4FT W OF WITNESS MKD (R 452 1953)	SL 1504
LANCASTR (1962)	3317.539	USC+GS MON IN TOP CONC POST 6IN DN 3.9MI E US HWY 99 32FT S C/L ST HWY 138 133FT E OF E END S HDWL CULV K298+00 1.5FT E WITNESS MKD (G 435 1953)	SL 1505
LANCASTR (1962)	3335.318	USC+GS MON IN TOP CONC POST 5IN UP 3.7MI E US HWY 99 37FT S C/L ST HWY 138 @ (T) JCT OF DIRT RD SLY 3.1MI N OLD QUAIL LAKE SCHOOL 25FT W OF SW COR CATTLE GUARD 4FT N PP NO 429984E 2FT E WITNESS MKD (Q 452 1953)	SL 1506
LANCASTR (1962)	3382.950	USC+GS MON IN TOP CONC POST 9IN UP 1FT LOWER THAN HWY 3.5MI E US HWY 99 94FT SE C/L ST HWY 138 ON SW SIDE SMALL HILL 81FT NW OF W LEG STEEL TRANS TOWER 72FT SE OF SE END 18IN CORR PIPE CULV K281-75 MKD (Z-53 1926 RESET 1953)	SL 1507
LANCASTR (1962)	3398.938	USC+GS MON 1FT UP TOP E END OF THE N HDWL 3.4MI E US HWY 99 21FT N C/L ST HWY 138 @ CONC BOX CULV K287+00 4FT W OF THE E END HDWL MKD (P 452 1953)	SL 1508

QUAD-YEAR	ELEV	D E S C R I P T I O N (INCLUDE QUAD AND YEAR IN DESCRIPTION)	BM NUMBER
LANCASTR (1962)	3444.288	USC+GS MON IN TOP CONC POST 6IN UP 3FT LOWER THAN HWY 3.2MI E US HWY 99 72FT S C/L ST HWY 138 77FT SE OF E END S CONC HDWL CULV K296+80 96FT E OF E END WIRE GATE 1.3FT W OF A WITNESS POST MKD (N 452 1953)	SL 1509
LANCASTR (1962)	3585.066	USC+GS MON IN TOP CONC POST 5IN UP 4FT HIGHER THAN HWY 2.8MI E US HWY 99 @ THE (Y) JCT OF DIRT RD ELY 48FT NE C/L ST HWY 138 24FT S C/L DIRT RD 2FT SE WITNESS POST MKD (B 370 1953)	SL 1510
LANCASTR (1962)	3562.610	USC+GS MON IN TOP CONC POST 6IN UP 2.7MI E US HWY 99 82FT N C/L ST HWY 138 25FT NW OF A RD NELY 4FT W PP NC 429839E MKD (M 452 1953)	SL 1511
LANCASTR (1962)	3482.032	USC+GS MON IN TOP OF SE END OF SW HDWL 3FT LOWER THAN HWY 2.4MI E US HWY 99 28FT SW C/L ST HWY 138 1FT NW OF SE END HDWL @ CULV K342+87 MKD (L 452 1953)	SL 1512
LANCASTR (1962)	3458.812	USC+GS MON IN TOP CONC POST 4IN UP 2.1MI E US HWY 99 41FT S C/L ST HWY 138 30FT SW CTR S END CULV K350+57 2FT E WITNESS MKD (A 370 1953)	SL 1513
LANCASTR (1962)	3481.655	USC+GS MON IN TOP CONC POST 6IN UP 3FT HIGHER THAN HWY 1.9MI E US HWY 99 @ A POWERLINE CROSSING 42FT SW C/L ST HWY 138 50FT W OF NW END OF SW CONC HDWL CULV K365+00 9FT NW PP NO 429812E 2FT SE WITNESS MKD (K 452 1953)	SL 1514
LANCASTR (1962)	3485.367	USC+GS MON IN TOP CONC POST 5IN UP 1.6MI E US HWY 99 31FT S C/L ST HWY 138 74FT NW OF NW COR FENCE AROUND GAS PIPE LINE VALVE 47FT W TP NO 25/41 1FT E WITNESS MKD (J 452 1953)	SL 1515
LANCASTR (1962)	3512.843	USC+GS MON IN TOP CONC POST 5IN UP 1.3MI E US HWY 99 36FT SW C/L ST HWY 138 68FT SE OF SE END OF SW CONC HDWL CULV K399+60 15FT W TP N/ 15/41 1FT W WITNESS MKD (A 54 1926)	SL 1516
LANCASTR (1962)	3544.014	USC+GS MON IN TOP CONC POST 5IN UP 1FT HIGHER THAN HWY 1.1MI E US HWY 99 39FT S C/L ST HWY 138 30FT W TP NO 10/41 32FT E OF E END WIRE GATE 2FT E WITNESS MKD (H 452 1953)	SL 1517
LANCASTR (1962)	3558.384	USC+GS MON IN TOP CONC POST 5IN UP 4FT HIGHER THAN HWY 0.8MI E US HWY 99 39FT NE C/L ST HWY 138 79FT SE PP NO 10610807E 2FT NW WITNESS MKD (G 452 1953)	SL 1518
LANCASTR (1962)	3599.907	USC+GS MON IN TOP CONC POST 5IN UP 6FT HIGHER THAN HWY 0.5MI E US HWY 99 50FT N C/L ST HWY 138 @ SE COR WIRE FENCE AROUND EDISON CO-GORMAN SUB STA 42FT NE PP NO 800607E 2FT E WITNESS POST MKD (F 452 1953)	SL 1519
LANCASTR (1962)	3631.156	USC+GS MON IN TOP OF E END OF N CONC HDWL 0.2MI E US HWY 99 22FT N C/L ST HWY 138 @ PIPE CULV K453+50 1FT W OF E END HDWL MKD (R 608 1942)	SL 1520
LANCASTR (1962)	3646.171	USC+GS MON IN TOP CONC POST 3IN UP 0.1MI E US HWY 99 46FT N C/L ST HWY 138 60FT NW OF W END OF N CONC HDWL K459+50 16FT NE TP NO 9/40 2FT SE WITNESS MKD (E 452 1953)	SL 1521
LANCASTR (1962)	3582.473	USC+GS MON IN TOP CONC POST 5IN UP 5FT HIGHER THAN HWY 0.4MI ELY GORMAN PD @ (Y) JCT US HWY 99 90FT N C/L + 125FT E OF S COR ST HWY MAINT SHOP 2FT E WITNESS MKD (Z 368 1953)	SL 1522

QUAD-YEAR	ELEV	DESCRIPTION (INCLUDE QUAD AND YEAR IN DESCRIPTION)	BM NUMBER
LANCASTR (1962)	2378.252	L+BN CONC FOOTING OF GATEPOST SW COR AVE K + 70TH ST W 40FT S + 103 FT W APPROX C/L INT MKD (BM)	SL 1804
LANCASTR (1962)	2381.781	2IN IP WITH CE TAG 6IN UP ON SE COR AVE K + 75TH ST W PROP 50FT S + 50FT E APPROX C/L INT	SL 1805
LANCASTR (1962)	2380.181	CS MON 12IN DN @ C/L INT AVE K + 75TH ST W PROP MKD (21-28 T7N R12W) (W EDGE)	SL 1806
LANCASTR (1962)	2395.543	CS MON 18IN DN @ C/L INT AVE K + 80TH ST W MKD (20-21-28-29 T7N R13W) (W EDGE)	SL 1807
LANCASTR (1962)	2398.996	2IN IP WITH CE TAG 6IN UP ON SW COR AVE K + 80TH ST W 50FT S + 50FT W APPROX C/L INT	SL 1808
LANCASTR (1962)	2427.241	CS MON 10IN DN @ C/L INT AVE K + 85TH ST W PROP MKD (1/4 COR 20-29 T7N R13W)	SL 1809
LANCASTR (1962)	2429.716	2IN IP WITH CE TAG 8IN UP ON NW COR AVE K + 85TH ST W PROP 50FT N + 50FT W APPROX C/L INT (N EDGE)	SL 1810
LANCASTR (1962)	2469.560	1.5IN IP + BRAD FLUSH ON SE COR AVE K + 90TH ST W 50FT S + 50FT E APPROX C/L INT	SL 1811
LANCASTR (1962)	2490.958	1.5IN IP NR CTR TOWER NO 35-1 75FT S C/L AVE K + 600FT W C/L 90TH ST W (S EDGE)	SL 1812
LANCASTR (1962)	2523.245	2IN IP WITH CE TAG 2IN DN ON SE COR AVE K + 95TH ST W PROP 50FT S + 50FT E APPROX C/L INT	SL 1813
LANCASTR (1962)	2523.179	2IN IP WITH CE TAG 4IN DN ON NW COR AVE K + 95TH ST W PROP 50FT N + 50FT W APPROX C/L INT	SL 1814
LANCASTR (1962)	2577.079	SPK+T PP NO 574764E 21FT N APPROX C/L AVE K + 325FT E C/L 100TH ST W PROP	SL 1815
LANCASTR (1962)	2582.547	RDBM MON 8IN DN 20FT E C/L 100TH ST W PROP ON TP LINE + 90FT N C/L AVE K 2IN IP MARKER 3FT UP + 2FT N	SL 1816
LANCASTR (1962)	2532.020	SPK+T TP 20FT E C/L 100TH ST W PROP + NR 1/4 COR 24-19 R13W R14W T7N	SL 1817
LANCASTR (1962)	2530.142	RDBM MON 8IN DN ON TP LINE APPROX 20FT E C/L 100TH ST W PROP + NR 1/4 COR 24-19 R13W R14W T7N 2IN IP MARKER 3FT UP + 2FT N	SL 1818
LANCASTR (1962)	2470.479	CS MON 8IN DN @ C/L INT AVE J + 100TH ST W PROP MKD (SEC COR 24-29-13-18 R13W R14W T7N)	SL 1819
LANCASTR (1962)	2467.118	RDBM TAG CONC FOOTING OF TOWER 25-5 100FT E C/L 100TH ST W PROP + APPROX 500FT N AVE J	SL 1820
LANCASTR (1962)	2456.419	2IN IP 12IN UP CN SE COR 100TH ST W PROP + AVE I-8 PROP 40FT S + 40FT E APPROX C/L INT	SL 1821
LANCASTR (1962)	2454.521	CS MON 6IN DN 20FT E C/L 100TH ST W PROP + 0.5MI N AVE J MKD (1/4 COR 13-18 T7N R13W R14W)	SL 1822